

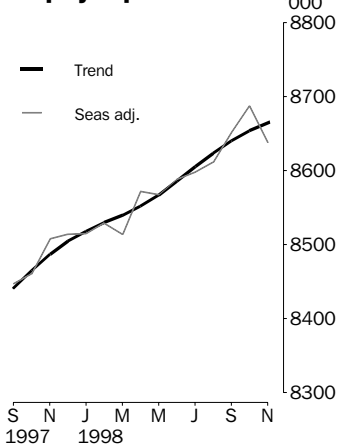


# LABOUR FORCE

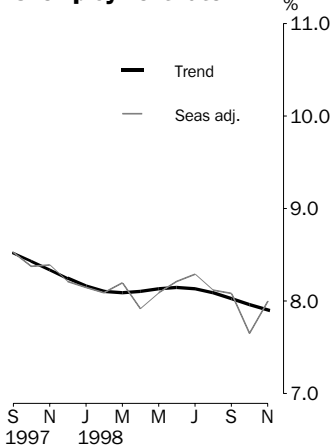
AUSTRALIA  
PRELIMINARY

EMBARGO: 11:30AM (CANBERRA TIME) THURS 10 DEC 1998

## Employed persons



## Unemployment rate



## NOVEMBER KEY FIGURES

### TREND

|                           | Oct 98  | Nov 98  | monthly change |
|---------------------------|---------|---------|----------------|
| Employed persons ('000)   | 8 653.8 | 8 664.8 | 0.1 %          |
| Unemployed persons ('000) | 748.6   | 742.5   | -0.8 %         |
| Unemployment rate (%)     | 8.0     | 7.9     | -0.1 pts       |
| Participation rate (%)    | 63.4    | 63.4    | -0.1 pts       |

### SEASONALLY ADJUSTED

|                           | Oct 98  | Nov 98  | monthly change |
|---------------------------|---------|---------|----------------|
| Employed persons ('000)   | 8 687.7 | 8 637.9 | -49.8          |
| Unemployed persons ('000) | 719.8   | 750.8   | 31.0           |
| Unemployment rate (%)     | 7.7     | 8.0     | 0.3 pts        |
| Participation rate (%)    | 63.4    | 63.2    | -0.2 pts       |

## NOVEMBER KEY POINTS

### TREND ESTIMATES

#### EMPLOYMENT

- has continued to rise steadily, reaching 8,664,800.

#### UNEMPLOYMENT

- has been falling steadily since July 1998, to stand at 742,500.

#### UNEMPLOYMENT RATE

- fell by 0.1 percentage points to 7.9%.

#### PARTICIPATION RATE

- fell by 0.1 percentage points to 63.4%.

### SEASONALLY ADJUSTED ESTIMATES

#### EMPLOYMENT

- fell by 49,800 to 8,637,900. Full-time employment fell by 25,100 to 6,401,100, while part-time employment fell by 24,700 to 2,236,800.

#### UNEMPLOYMENT

- rose by 31,000 to 750,800, with the number of persons looking for full-time work rising by 23,000 to 578,700.

#### UNEMPLOYMENT RATE

- rose by 0.3 percentage points to 8.0%. The male rate rose by 0.2 percentage points to 8.1%, while the female rate rose by 0.5 percentage points to 7.9%.
- NSW 7.8% (6.7% last month); Vic 7.8% (7.8%); Qld 8.2% (8.8%); SA 9.8% (9.2%); WA 7.1% (7.0%); Tas. 9.8% (10.6%).

#### PARTICIPATION RATE

- fell by 0.2 percentage points to 63.2%, with the female rate falling by 0.4 percentage points to 53.8%.

- For further information about these and related statistics, contact Michael Sleaf on 02 6252 6525 or any ABS office shown on the back cover of this publication.

# NOTES

## FORTHCOMING ISSUES

| <i>ISSUE</i>  | <i>RELEASE DATE</i> |
|---------------|---------------------|
| December 1998 | 14 January 1999     |
| January 1999  | 11 February 1999    |
| February 1999 | 11 March 1999       |
| March 1999    | 8 April 1999        |
| April 1999    | 13 May 1999         |
| May 1999      | 10 June 1999        |



## ROUNDING

Estimates of monthly change shown on page 1 have been calculated using unrounded estimates, and may be different from, but are more accurate than, movements obtained from the rounded estimates. The graphs on page 1 also depict movements calculated from unrounded estimates.



## SAMPLING ERRORS

The estimates in this publication are based on a sample survey. Because the entire population is not enumerated, the published estimates and the movements derived from them are subject to sampling variability. Standard errors give a measure of this variability and appear on pages 30 and 31.

The 95% confidence intervals below provide another way of looking at the variability inherent in estimates from sample surveys. The interval bounded by the two limits is the 95% confidence interval. A 95% confidence interval indicates that we are 95% confident that the upper and lower limits enclose the true value of the estimate.

| <i>SEASONALLY ADJUSTED<br/>DATA SERIES</i> | <i>MOVEMENTS<br/>OCTOBER 1998 TO NOVEMBER 1998</i> |                                |
|--|--|--------------------------------|
|  | <i>Monthly change</i>                              | <i>95% Confidence interval</i> |
| Total employment                           | -49 800  | -89 400 to -10 200             |
| Total unemployment                         | +31 000  | 15 400 to 46 600               |
| Unemployment rate                          | 0.3 pts  | 0.1 pts to 0.5 pts             |
| Participation rate                         | -0.2 pts   | -0.4 pts to 0.0 pts            |

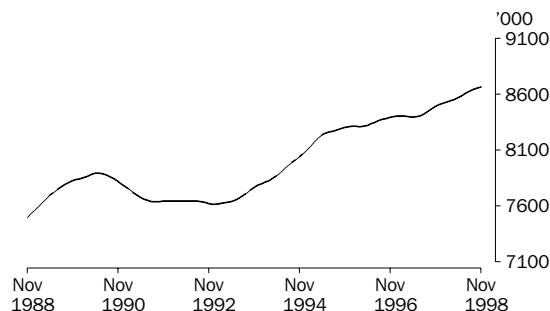


W. McLennan  
Australian Statistician

# PRINCIPAL LABOUR FORCE SERIES: Trend estimates

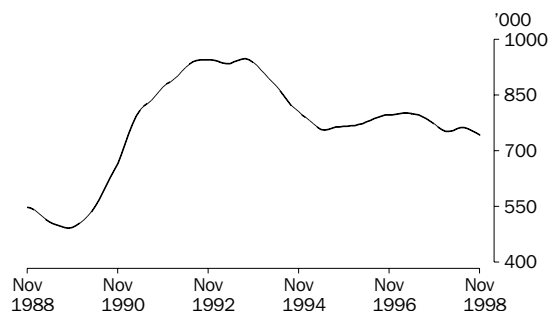
## EMPLOYED PERSONS

The trend estimate of employed persons rose strongly from a low of 7,616,000 in January 1993, until mid 1995. Over the next two years, growth slowed, with the trend estimate reaching 8,403,600 in July 1997. Over the past 16 months, growth in the trend estimate has again increased. The trend stood at 8,664,800 in November 1998.



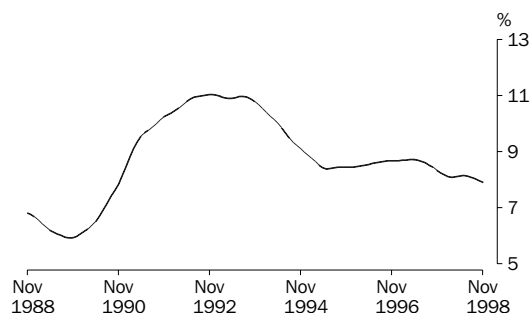
## UNEMPLOYED PERSONS

From a high of 947,800 in September 1993, the trend estimate of unemployed persons fell rapidly to 755,200 in June 1995. The trend then rose slowly for almost two years, reaching 801,400 in April 1997. After falling to 751,300 in March 1998, the trend rose to 761,900 in July 1998, before falling again to 741,500 in November 1998.



## UNEMPLOYMENT RATE

From a high of 11.0% in mid 1993, the trend unemployment rate fell rapidly to 8.4% in May 1995. The trend then rose slowly, remaining steady at 8.7% from September 1996 to June 1997. Since this time, apart from a small increase in mid 1998, the trend has declined. It stood at 7.9% in November 1998.

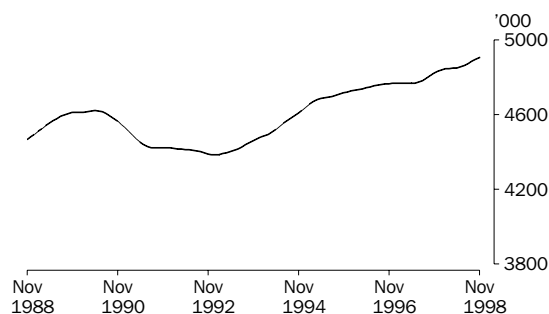


## EMPLOYED PERSONS: Trend estimates

### EMPLOYED MALES

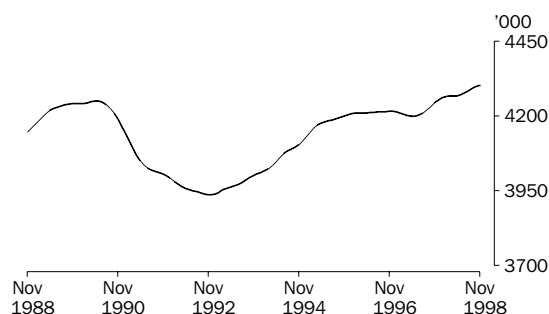
#### TOTAL

From a low of 4,383,700 in January 1993, the trend estimate of employed males rose strongly until April 1995. Growth then slowed, with the trend reaching 4,767,700 in February 1997. The trend estimate has continued to rise, reaching 4,906,800 in November 1998.



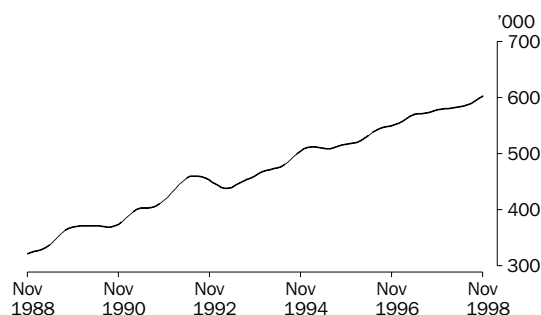
#### MALES EMPLOYED FULL TIME

From a high of 4,249,700 in May 1990, the trend estimate of males employed full time fell rapidly to 3,935,700 in late 1992. The trend then grew strongly until mid 1995, before slowing to reach 4,215,500 in December 1996. The trend fell to 4,198,000 in May 1997. It has since steadily increased, to stand at 4,303,700 in November 1998.



#### MALES EMPLOYED PART TIME

The trend estimate for males employed part time has almost doubled over the past ten years, from 320,700 in November 1988 to 603,100 in November 1998. Apart from some short periods of decline over this time, growth of the trend estimate has been relatively steady. Over the past year, the trend estimate has increased by 4.4%

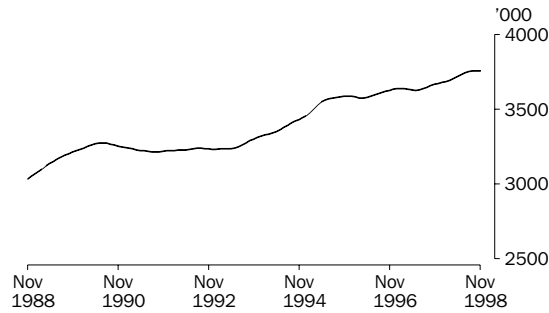


## EMPLOYED PERSONS: Trend estimates

### EMPLOYED FEMALES

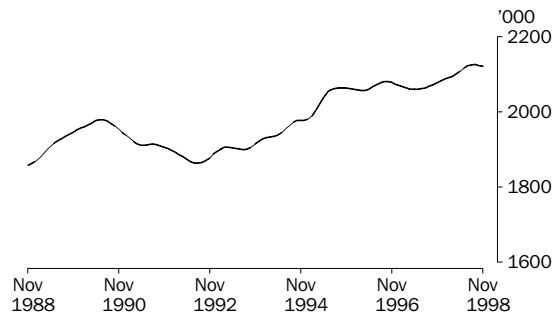
#### TOTAL

From a low of 3,214,900 in September 1991, the trend estimate of female employment generally rose slowly to stand at 3,587,100 in December 1995. Apart from small falls in early 1996 and early 1997, the trend continued rising slowly to reach 3,758,000 in November 1998.



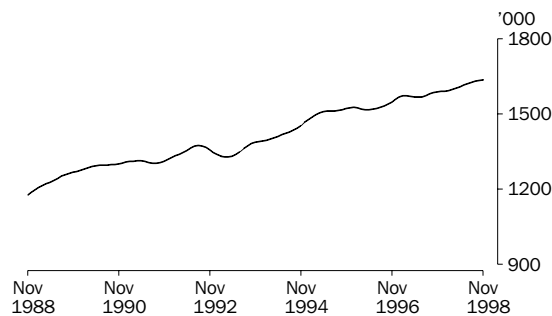
#### FEMALES EMPLOYED FULL TIME

Apart from some short periods of decline, the trend estimate of females employed full time rose strongly from 1,863,600 in August 1992, to 2,063,400 in September 1995. The trend remained relatively flat until May 1997, before rising steadily to reach 2,125,600 in September 1998. The trend fell to 2,121,700 in November 1998.



#### FEMALES EMPLOYED PART TIME

The trend estimate of female part-time employment has been rising steadily over the past ten years, with only one significant period of decline, which occurred between August 1992 and April 1993. The trend estimate was 1,636,300 in November 1998, an increase of 3.0% in the last 12 months.



## LABOUR FORCE STATUS (AGED 15 AND OVER): Original

| Month          | EMPLOYED..... |           |         | UNEMPLOYED.....      |                      |       | Labour force | Not in labour force | Civilian population aged 15 and over | Unemployment rate | Participation rate |
|----------------|---------------|-----------|---------|----------------------|----------------------|-------|--------------|---------------------|--------------------------------------|-------------------|--------------------|
|                | Full time     | Part time | Total   | Looking for f/t work | Looking for p/t work | Total |              |                     |                                      |                   |                    |
|                | '000          | '000      | '000    | '000                 | '000                 | '000  |              |                     |                                      |                   |                    |
| <b>MALES</b>   |               |           |         |                      |                      |       |              |                     |                                      |                   |                    |
| <b>1997</b>    |               |           |         |                      |                      |       |              |                     |                                      |                   |                    |
| September      | 4 235.5       | 581.0     | 4 816.6 | 399.5                | 70.0                 | 469.5 | 5 286.1      | 1 904.0             | 7 190.1                              | 8.9               | 73.5               |
| October        | 4 234.5       | 577.3     | 4 811.8 | 370.2                | 56.5                 | 426.7 | 5 238.5      | 1 961.2             | 7 199.7                              | 8.1               | 72.8               |
| November       | 4 238.8       | 582.6     | 4 821.4 | 378.3                | 59.0                 | 437.2 | 5 258.7      | 1 950.6             | 7 209.3                              | 8.3               | 72.9               |
| December       | 4 309.7       | 586.8     | 4 896.5 | 380.0                | 66.5                 | 446.5 | 5 343.0      | 1 875.9             | 7 218.9                              | 8.4               | 74.0               |
| <b>1998</b>    |               |           |         |                      |                      |       |              |                     |                                      |                   |                    |
| January        | 4 270.0       | 541.9     | 4 811.9 | 417.8                | 59.9                 | 477.8 | 5 289.7      | 1 936.9             | 7 226.6                              | 9.0               | 73.2               |
| February       | 4 261.2       | 554.5     | 4 815.7 | 412.9                | 70.0                 | 482.9 | 5 298.7      | 1 935.6             | 7 234.3                              | 9.1               | 73.2               |
| March          | 4 246.0       | 587.4     | 4 833.4 | 396.2                | 63.3                 | 459.5 | 5 292.9      | 1 949.1             | 7 242.0                              | 8.7               | 73.1               |
| April          | 4 268.7       | 587.1     | 4 855.8 | 359.0                | 59.2                 | 418.2 | 5 274.0      | 1 976.4             | 7 250.4                              | 7.9               | 72.7               |
| May            | 4 249.0       | 598.8     | 4 847.8 | 377.4                | 56.1                 | 433.5 | 5 281.3      | 1 977.6             | 7 258.9                              | 8.2               | 72.8               |
| June           | 4 254.4       | 606.5     | 4 860.9 | 381.3                | 50.9                 | 432.2 | 5 293.1      | 1 974.3             | 7 267.4                              | 8.2               | 72.8               |
| July           | 4 298.1       | 575.3     | 4 873.4 | 382.2                | 50.5                 | 432.7 | 5 306.1      | 1 969.2             | 7 275.3                              | 8.2               | 72.9               |
| August         | 4 230.1       | 582.5     | 4 812.6 | 378.7                | 58.6                 | 437.2 | 5 249.8      | 2 033.4             | 7 283.2                              | 8.3               | 72.1               |
| September      | 4 319.9       | 609.1     | 4 929.0 | 386.5                | 58.9                 | 445.4 | 5 374.4      | 1 916.8             | 7 291.2                              | 8.3               | 73.7               |
| October        | 4 307.8       | 608.6     | 4 916.4 | 342.7                | 53.8                 | 396.6 | 5 313.0      | 1 989.7             | 7 302.7                              | 7.5               | 72.8               |
| November       | 4 284.9       | 610.3     | 4 895.2 | 361.2                | 51.7                 | 412.9 | 5 308.1      | 2 006.0             | 7 314.2                              | 7.8               | 72.6               |
| <b>FEMALES</b> |               |           |         |                      |                      |       |              |                     |                                      |                   |                    |
| <b>1997</b>    |               |           |         |                      |                      |       |              |                     |                                      |                   |                    |
| September      | 2 084.6       | 1 625.2   | 3 709.8 | 213.3                | 110.2                | 323.5 | 4 033.3      | 3 386.8             | 7 420.1                              | 8.0               | 54.4               |
| October        | 2 072.2       | 1 579.8   | 3 652.1 | 208.1                | 101.7                | 309.8 | 3 961.8      | 3 467.4             | 7 429.2                              | 7.8               | 53.3               |
| November       | 2 081.6       | 1 618.5   | 3 700.0 | 204.2                | 95.3                 | 299.6 | 3 999.6      | 3 438.7             | 7 438.3                              | 7.5               | 53.8               |
| December       | 2 133.9       | 1 584.9   | 3 718.8 | 218.0                | 99.1                 | 317.1 | 4 035.9      | 3 411.5             | 7 447.4                              | 7.9               | 54.2               |
| <b>1998</b>    |               |           |         |                      |                      |       |              |                     |                                      |                   |                    |
| January        | 2 085.9       | 1 488.5   | 3 574.4 | 236.0                | 103.1                | 339.1 | 3 913.6      | 3 540.8             | 7 454.3                              | 8.7               | 52.5               |
| February       | 2 086.7       | 1 559.7   | 3 646.4 | 244.8                | 114.7                | 359.5 | 4 005.9      | 3 455.3             | 7 461.2                              | 9.0               | 53.7               |
| March          | 2 083.9       | 1 603.1   | 3 687.0 | 230.5                | 112.0                | 342.5 | 4 029.5      | 3 438.6             | 7 468.2                              | 8.5               | 54.0               |
| April          | 2 098.2       | 1 622.4   | 3 720.6 | 209.0                | 109.5                | 318.6 | 4 039.2      | 3 436.7             | 7 475.9                              | 7.9               | 54.0               |
| May            | 2 076.8       | 1 643.0   | 3 719.8 | 212.4                | 92.6                 | 304.9 | 4 024.7      | 3 459.0             | 7 483.7                              | 7.6               | 53.8               |
| June           | 2 095.7       | 1 653.2   | 3 748.8 | 199.7                | 103.7                | 303.4 | 4 052.2      | 3 439.3             | 7 491.5                              | 7.5               | 54.1               |
| July           | 2 157.1       | 1 606.3   | 3 763.3 | 199.3                | 95.9                 | 295.1 | 4 058.5      | 3 440.4             | 7 498.9                              | 7.3               | 54.1               |
| August         | 2 098.6       | 1 624.8   | 3 723.4 | 196.9                | 93.8                 | 290.7 | 4 014.1      | 3 492.1             | 7 506.2                              | 7.2               | 53.5               |
| September      | 2 141.5       | 1 663.4   | 3 804.9 | 207.9                | 112.3                | 320.2 | 4 125.1      | 3 388.5             | 7 513.5                              | 7.8               | 54.9               |
| October        | 2 125.2       | 1 648.6   | 3 773.7 | 184.0                | 105.0                | 289.0 | 4 062.7      | 3 461.6             | 7 524.3                              | 7.1               | 54.0               |
| November       | 2 112.3       | 1 645.7   | 3 757.9 | 191.0                | 106.6                | 297.6 | 4 055.5      | 3 479.6             | 7 535.1                              | 7.3               | 53.8               |
| <b>PERSONS</b> |               |           |         |                      |                      |       |              |                     |                                      |                   |                    |
| <b>1997</b>    |               |           |         |                      |                      |       |              |                     |                                      |                   |                    |
| September      | 6 320.2       | 2 206.2   | 8 526.4 | 612.8                | 180.2                | 793.0 | 9 319.4      | 5 290.9             | 14 610.3                             | 8.5               | 63.8               |
| October        | 6 306.7       | 2 157.2   | 8 463.9 | 578.3                | 158.1                | 736.4 | 9 200.3      | 5 428.6             | 14 628.9                             | 8.0               | 62.9               |
| November       | 6 320.4       | 2 201.1   | 8 521.5 | 582.5                | 154.3                | 736.8 | 9 258.3      | 5 389.3             | 14 647.6                             | 8.0               | 63.2               |
| December       | 6 443.6       | 2 171.7   | 8 615.2 | 598.0                | 165.7                | 763.6 | 9 378.9      | 5 287.4             | 14 666.3                             | 8.1               | 63.9               |
| <b>1998</b>    |               |           |         |                      |                      |       |              |                     |                                      |                   |                    |
| January        | 6 355.9       | 2 030.4   | 8 386.3 | 653.9                | 163.0                | 816.9 | 9 203.2      | 5 477.7             | 14 680.9                             | 8.9               | 62.7               |
| February       | 6 347.9       | 2 114.2   | 8 462.1 | 657.7                | 184.8                | 842.5 | 9 304.6      | 5 390.9             | 14 695.5                             | 9.1               | 63.3               |
| March          | 6 329.9       | 2 190.5   | 8 520.4 | 626.7                | 175.3                | 802.0 | 9 322.4      | 5 387.7             | 14 710.1                             | 8.6               | 63.4               |
| April          | 6 366.9       | 2 209.5   | 8 576.4 | 568.0                | 168.8                | 736.8 | 9 313.2      | 5 413.2             | 14 726.4                             | 7.9               | 63.2               |
| May            | 6 325.8       | 2 241.8   | 8 567.6 | 589.8                | 148.7                | 738.5 | 9 306.1      | 5 436.6             | 14 742.6                             | 7.9               | 63.1               |
| June           | 6 350.1       | 2 259.7   | 8 609.8 | 581.0                | 154.6                | 735.6 | 9 345.4      | 5 413.6             | 14 758.9                             | 7.9               | 63.3               |
| July           | 6 455.2       | 2 181.6   | 8 636.8 | 581.4                | 146.4                | 727.8 | 9 364.6      | 5 409.6             | 14 774.2                             | 7.8               | 63.4               |
| August         | 6 328.7       | 2 207.2   | 8 535.9 | 575.6                | 152.4                | 727.9 | 9 263.9      | 5 525.6             | 14 789.4                             | 7.9               | 62.6               |
| September      | 6 461.5       | 2 272.4   | 8 733.9 | 594.4                | 171.2                | 765.6 | 9 499.5      | 5 305.3             | 14 804.7                             | 8.1               | 64.2               |
| October        | 6 432.9       | 2 257.2   | 8 690.2 | 526.7                | 158.9                | 685.6 | 9 375.7      | 5 451.3             | 14 827.0                             | 7.3               | 63.2               |
| November       | 6 397.1       | 2 256.0   | 8 653.1 | 552.2                | 158.3                | 710.5 | 9 363.7      | 5 485.6             | 14 849.3                             | 7.6               | 63.1               |

LABOUR FORCE STATUS (AGED 15 AND OVER): **Seasonally adjusted**

| Month       | EMPLOYED.....     |                   |               | UNEMPLOYED.....                    |                                    |               | Labour force<br>'000 | Unemp-<br>loyment<br>rate<br>% | Partic-<br>ipation<br>rate<br>% |
|-------------|-------------------|-------------------|---------------|------------------------------------|------------------------------------|---------------|----------------------|--------------------------------|---------------------------------|
|             | Full time<br>'000 | Part time<br>'000 | Total<br>'000 | Looking<br>for f/t<br>work<br>'000 | Looking<br>for p/t<br>work<br>'000 | Total<br>'000 |                      |                                |                                 |
| MALES       |                   |                   |               |                                    |                                    |               |                      |                                |                                 |
| <b>1997</b> |                   |                   |               |                                    |                                    |               |                      |                                |                                 |
| September   | 4 224.2           | 566.7             | 4 790.9       | 399.5                              | 64.7                               | 464.3         | 5 255.2              | 8.8                            | 73.1                            |
| October     | 4 233.3           | 574.3             | 4 807.6       | 391.4                              | 59.6                               | 451.0         | 5 258.6              | 8.6                            | 73.0                            |
| November    | 4 247.0           | 584.5             | 4 831.5       | 391.5                              | 66.4                               | 457.9         | 5 289.4              | 8.7                            | 73.4                            |
| December    | 4 248.4           | 587.8             | 4 836.3       | 382.5                              | 62.6                               | 445.1         | 5 281.4              | 8.4                            | 73.2                            |
| <b>1998</b> |                   |                   |               |                                    |                                    |               |                      |                                |                                 |
| January     | 4 271.4           | 572.1             | 4 843.5       | 378.6                              | 54.9                               | 433.5         | 5 277.0              | 8.2                            | 73.0                            |
| February    | 4 257.3           | 580.6             | 4 837.8       | 379.2                              | 64.8                               | 444.0         | 5 281.9              | 8.4                            | 73.0                            |
| March       | 4 263.3           | 577.8             | 4 841.1       | 387.9                              | 54.0                               | 441.8         | 5 282.9              | 8.4                            | 72.9                            |
| April       | 4 281.1           | 576.1             | 4 857.2       | 365.8                              | 56.7                               | 422.5         | 5 279.7              | 8.0                            | 72.8                            |
| May         | 4 259.8           | 593.8             | 4 853.5       | 379.9                              | 58.9                               | 438.8         | 5 292.3              | 8.3                            | 72.9                            |
| June        | 4 264.6           | 593.0             | 4 857.6       | 391.5                              | 56.3                               | 447.8         | 5 305.3              | 8.4                            | 73.0                            |
| July        | 4 274.0           | 582.1             | 4 856.1       | 401.8                              | 57.2                               | 459.0         | 5 315.0              | 8.6                            | 73.1                            |
| August      | 4 273.1           | 573.1             | 4 846.2       | 387.1                              | 66.3                               | 453.3         | 5 299.6              | 8.6                            | 72.8                            |
| September   | 4 307.9           | 594.6             | 4 902.5       | 386.9                              | 54.2                               | 441.1         | 5 343.6              | 8.3                            | 73.3                            |
| October     | 4 307.0           | 605.4             | 4 912.3       | 362.3                              | 56.9                               | 419.2         | 5 331.5              | 7.9                            | 73.0                            |
| November    | 4 293.1           | 611.8             | 4 904.9       | 373.9                              | 58.0                               | 431.9         | 5 336.8              | 8.1                            | 73.0                            |
| FEMALES     |                   |                   |               |                                    |                                    |               |                      |                                |                                 |
| <b>1997</b> |                   |                   |               |                                    |                                    |               |                      |                                |                                 |
| September   | 2 071.6           | 1 584.5           | 3 656.1       | 218.3                              | 104.6                              | 322.9         | 3 979.0              | 8.1                            | 53.6                            |
| October     | 2 066.0           | 1 586.7           | 3 652.7       | 218.7                              | 103.8                              | 322.6         | 3 975.2              | 8.1                            | 53.5                            |
| November    | 2 077.3           | 1 598.4           | 3 675.7       | 219.0                              | 101.8                              | 320.8         | 3 996.5              | 8.0                            | 53.7                            |
| December    | 2 089.3           | 1 588.4           | 3 677.7       | 215.2                              | 101.2                              | 316.4         | 3 994.1              | 7.9                            | 53.6                            |
| <b>1998</b> |                   |                   |               |                                    |                                    |               |                      |                                |                                 |
| January     | 2 086.1           | 1 585.0           | 3 671.1       | 214.5                              | 106.9                              | 321.3         | 3 992.5              | 8.0                            | 53.6                            |
| February    | 2 093.3           | 1 598.2           | 3 691.5       | 209.5                              | 97.4                               | 306.9         | 3 998.5              | 7.7                            | 53.6                            |
| March       | 2 087.3           | 1 585.5           | 3 672.8       | 221.6                              | 97.0                               | 318.6         | 3 991.4              | 8.0                            | 53.4                            |
| April       | 2 111.9           | 1 603.0           | 3 714.9       | 208.0                              | 106.8                              | 314.7         | 4 029.7              | 7.8                            | 53.9                            |
| May         | 2 089.2           | 1 624.6           | 3 713.8       | 219.5                              | 95.6                               | 315.1         | 4 028.9              | 7.8                            | 53.8                            |
| June        | 2 112.9           | 1 617.0           | 3 730.0       | 207.8                              | 112.2                              | 320.1         | 4 050.0              | 7.9                            | 54.1                            |
| July        | 2 136.0           | 1 606.0           | 3 742.0       | 212.0                              | 106.0                              | 318.1         | 4 060.0              | 7.8                            | 54.1                            |
| August      | 2 134.5           | 1 630.5           | 3 765.0       | 207.2                              | 100.5                              | 307.6         | 4 072.6              | 7.6                            | 54.3                            |
| September   | 2 127.7           | 1 622.3           | 3 750.0       | 212.8                              | 106.6                              | 319.5         | 4 069.4              | 7.9                            | 54.2                            |
| October     | 2 119.2           | 1 656.2           | 3 775.4       | 193.4                              | 107.2                              | 300.6         | 4 076.0              | 7.4                            | 54.2                            |
| November    | 2 108.0           | 1 625.0           | 3 733.0       | 204.8                              | 114.1                              | 318.9         | 4 051.9              | 7.9                            | 53.8                            |
| PERSONS     |                   |                   |               |                                    |                                    |               |                      |                                |                                 |
| <b>1997</b> |                   |                   |               |                                    |                                    |               |                      |                                |                                 |
| September   | 6 295.8           | 2 151.2           | 8 447.0       | 617.8                              | 169.3                              | 787.1         | 9 234.2              | 8.5                            | 63.2                            |
| October     | 6 299.3           | 2 161.0           | 8 460.3       | 610.1                              | 163.4                              | 773.5         | 9 233.8              | 8.4                            | 63.1                            |
| November    | 6 324.3           | 2 182.9           | 8 507.2       | 610.5                              | 168.2                              | 778.7         | 9 285.9              | 8.4                            | 63.4                            |
| December    | 6 337.8           | 2 176.2           | 8 514.0       | 597.7                              | 163.8                              | 761.5         | 9 275.5              | 8.2                            | 63.2                            |
| <b>1998</b> |                   |                   |               |                                    |                                    |               |                      |                                |                                 |
| January     | 6 357.5           | 2 157.1           | 8 514.6       | 593.1                              | 161.8                              | 754.8         | 9 269.5              | 8.1                            | 63.1                            |
| February    | 6 350.6           | 2 178.8           | 8 529.4       | 588.7                              | 162.2                              | 751.0         | 9 280.3              | 8.1                            | 63.2                            |
| March       | 6 350.5           | 2 163.3           | 8 513.9       | 609.4                              | 151.0                              | 760.4         | 9 274.3              | 8.2                            | 63.0                            |
| April       | 6 393.0           | 2 179.1           | 8 572.1       | 573.8                              | 163.4                              | 737.2         | 9 309.3              | 7.9                            | 63.2                            |
| May         | 6 349.0           | 2 218.4           | 8 567.4       | 599.4                              | 154.4                              | 753.9         | 9 321.2              | 8.1                            | 63.2                            |
| June        | 6 377.5           | 2 210.0           | 8 587.5       | 599.3                              | 168.5                              | 767.8         | 9 355.4              | 8.2                            | 63.4                            |
| July        | 6 409.9           | 2 188.1           | 8 598.0       | 613.8                              | 163.2                              | 777.0         | 9 375.1              | 8.3                            | 63.5                            |
| August      | 6 407.6           | 2 203.6           | 8 611.2       | 594.2                              | 166.7                              | 761.0         | 9 372.2              | 8.1                            | 63.4                            |
| September   | 6 435.6           | 2 216.9           | 8 652.5       | 599.7                              | 160.9                              | 760.6         | 9 413.1              | 8.1                            | 63.6                            |
| October     | 6 426.2           | 2 261.5           | 8 687.7       | 555.7                              | 164.1                              | 719.8         | 9 407.5              | 7.7                            | 63.4                            |
| November    | 6 401.1           | 2 236.8           | 8 637.9       | 578.7                              | 172.1                              | 750.8         | 9 388.7              | 8.0                            | 63.2                            |

LABOUR FORCE STATUS (AGED 15 AND OVER): Trend(a)

| Month       | EMPLOYED..... |           |         | UNEMPLOYED.....            |                            |       | Labour force | Unemp-<br>loyment<br>rate | Partic-<br>ipation<br>rate |
|-------------|---------------|-----------|---------|----------------------------|----------------------------|-------|--------------|---------------------------|----------------------------|
|             | Full time     | Part time | Total   | Looking<br>for f/t<br>work | Looking<br>for p/t<br>work | Total |              |                           |                            |
|             | '000          | '000      | '000    | '000                       | '000                       | '000  | '000         | %                         | %                          |
| MALES       |               |           |         |                            |                            |       |              |                           |                            |
| <b>1997</b> |               |           |         |                            |                            |       |              |                           |                            |
| September   | 4 220.3       | 573.0     | 4 793.3 | 399.8                      | 60.6                       | 460.4 | 5 253.7      | 8.8                       | 73.1                       |
| October     | 4 231.7       | 575.3     | 4 807.0 | 394.9                      | 61.8                       | 456.7 | 5 263.7      | 8.7                       | 73.1                       |
| November    | 4 243.1       | 577.6     | 4 820.7 | 389.6                      | 62.2                       | 451.8 | 5 272.5      | 8.6                       | 73.1                       |
| December    | 4 253.0       | 579.1     | 4 832.0 | 384.6                      | 61.7                       | 446.3 | 5 278.3      | 8.5                       | 73.1                       |
| <b>1998</b> |               |           |         |                            |                            |       |              |                           |                            |
| January     | 4 260.3       | 579.8     | 4 840.1 | 380.5                      | 60.5                       | 441.0 | 5 281.1      | 8.4                       | 73.1                       |
| February    | 4 264.6       | 580.4     | 4 845.1 | 378.4                      | 58.9                       | 437.3 | 5 282.4      | 8.3                       | 73.0                       |
| March       | 4 266.1       | 581.3     | 4 847.4 | 378.4                      | 57.7                       | 436.1 | 5 283.5      | 8.3                       | 72.9                       |
| April       | 4 266.3       | 582.2     | 4 848.5 | 380.8                      | 57.4                       | 438.1 | 5 286.7      | 8.3                       | 72.9                       |
| May         | 4 267.3       | 583.2     | 4 850.5 | 384.5                      | 57.6                       | 442.1 | 5 292.6      | 8.4                       | 72.9                       |
| June        | 4 270.6       | 584.5     | 4 855.1 | 387.5                      | 58.1                       | 445.6 | 5 300.7      | 8.4                       | 72.9                       |
| July        | 4 276.5       | 586.4     | 4 862.9 | 388.2                      | 58.5                       | 446.7 | 5 309.6      | 8.4                       | 73.0                       |
| August      | 4 283.8       | 589.3     | 4 873.1 | 386.4                      | 58.7                       | 445.1 | 5 318.2      | 8.4                       | 73.0                       |
| September   | 4 291.2       | 593.6     | 4 884.8 | 382.7                      | 58.5                       | 441.2 | 5 326.1      | 8.3                       | 73.0                       |
| October     | 4 297.6       | 598.7     | 4 896.3 | 378.5                      | 58.1                       | 436.6 | 5 332.9      | 8.2                       | 73.0                       |
| November    | 4 303.7       | 603.1     | 4 906.8 | 373.3                      | 57.7                       | 431.0 | 5 337.8      | 8.1                       | 73.0                       |
| FEMALES     |               |           |         |                            |                            |       |              |                           |                            |
| <b>1997</b> |               |           |         |                            |                            |       |              |                           |                            |
| September   | 2 068.1       | 1 579.8   | 3 647.9 | 220.1                      | 105.6                      | 325.7 | 3 973.6      | 8.2                       | 53.6                       |
| October     | 2 072.5       | 1 585.3   | 3 657.8 | 218.5                      | 104.2                      | 322.7 | 3 980.5      | 8.1                       | 53.6                       |
| November    | 2 077.7       | 1 588.6   | 3 666.3 | 217.1                      | 103.1                      | 320.2 | 3 986.4      | 8.0                       | 53.6                       |
| December    | 2 082.7       | 1 590.0   | 3 672.8 | 215.9                      | 102.0                      | 317.9 | 3 990.6      | 8.0                       | 53.6                       |
| <b>1998</b> |               |           |         |                            |                            |       |              |                           |                            |
| January     | 2 086.9       | 1 591.5   | 3 678.4 | 215.0                      | 101.0                      | 316.0 | 3 994.4      | 7.9                       | 53.6                       |
| February    | 2 090.6       | 1 593.8   | 3 684.4 | 214.5                      | 100.7                      | 315.2 | 3 999.6      | 7.9                       | 53.6                       |
| March       | 2 094.6       | 1 597.9   | 3 692.5 | 214.1                      | 101.1                      | 315.2 | 4 007.7      | 7.9                       | 53.7                       |
| April       | 2 100.3       | 1 603.1   | 3 703.5 | 213.9                      | 101.9                      | 315.7 | 4 019.2      | 7.9                       | 53.8                       |
| May         | 2 108.0       | 1 609.1   | 3 717.2 | 213.4                      | 102.8                      | 316.2 | 4 033.4      | 7.8                       | 53.9                       |
| June        | 2 116.1       | 1 615.2   | 3 731.3 | 212.2                      | 103.8                      | 316.0 | 4 047.3      | 7.8                       | 54.0                       |
| July        | 2 122.3       | 1 620.6   | 3 742.9 | 210.3                      | 104.9                      | 315.2 | 4 058.1      | 7.8                       | 54.1                       |
| August      | 2 125.4       | 1 625.6   | 3 750.9 | 208.0                      | 105.8                      | 313.9 | 4 064.8      | 7.7                       | 54.2                       |
| September   | 2 125.6       | 1 630.0   | 3 755.6 | 205.8                      | 106.9                      | 312.7 | 4 068.3      | 7.7                       | 54.1                       |
| October     | 2 123.7       | 1 633.8   | 3 757.5 | 203.8                      | 108.2                      | 312.0 | 4 069.5      | 7.7                       | 54.1                       |
| November    | 2 121.7       | 1 636.3   | 3 758.0 | 201.6                      | 109.9                      | 311.5 | 4 069.5      | 7.7                       | 54.0                       |
| PERSONS     |               |           |         |                            |                            |       |              |                           |                            |
| <b>1997</b> |               |           |         |                            |                            |       |              |                           |                            |
| September   | 6 288.4       | 2 152.7   | 8 441.2 | 619.8                      | 166.3                      | 786.1 | 9 227.3      | 8.5                       | 63.2                       |
| October     | 6 304.2       | 2 160.6   | 8 464.8 | 613.4                      | 166.0                      | 779.4 | 9 244.2      | 8.4                       | 63.2                       |
| November    | 6 320.8       | 2 166.2   | 8 487.0 | 606.7                      | 165.3                      | 772.0 | 9 258.9      | 8.3                       | 63.2                       |
| December    | 6 335.7       | 2 169.1   | 8 504.8 | 600.4                      | 163.7                      | 764.2 | 9 269.0      | 8.2                       | 63.2                       |
| <b>1998</b> |               |           |         |                            |                            |       |              |                           |                            |
| January     | 6 347.2       | 2 171.3   | 8 518.5 | 595.5                      | 161.5                      | 757.0 | 9 275.4      | 8.2                       | 63.2                       |
| February    | 6 355.2       | 2 174.3   | 8 529.5 | 592.9                      | 159.6                      | 752.5 | 9 282.0      | 8.1                       | 63.2                       |
| March       | 6 360.6       | 2 179.2   | 8 539.9 | 592.5                      | 158.8                      | 751.3 | 9 291.2      | 8.1                       | 63.2                       |
| April       | 6 366.6       | 2 185.4   | 8 552.0 | 594.7                      | 159.2                      | 753.9 | 9 305.9      | 8.1                       | 63.2                       |
| May         | 6 375.3       | 2 192.3   | 8 567.7 | 597.9                      | 160.4                      | 758.3 | 9 325.9      | 8.1                       | 63.3                       |
| June        | 6 386.7       | 2 199.7   | 8 586.5 | 599.7                      | 161.9                      | 761.6 | 9 348.1      | 8.1                       | 63.3                       |
| July        | 6 398.8       | 2 207.0   | 8 605.8 | 598.5                      | 163.4                      | 761.9 | 9 367.6      | 8.1                       | 63.4                       |
| August      | 6 409.2       | 2 214.9   | 8 624.1 | 594.4                      | 164.5                      | 758.9 | 9 383.0      | 8.1                       | 63.4                       |
| September   | 6 416.8       | 2 223.6   | 8 640.4 | 588.5                      | 165.5                      | 753.9 | 9 394.4      | 8.0                       | 63.5                       |
| October     | 6 421.3       | 2 232.4   | 8 653.8 | 582.3                      | 166.3                      | 748.6 | 9 402.3      | 8.0                       | 63.4                       |
| November    | 6 425.4       | 2 239.4   | 8 664.8 | 574.9                      | 167.6                      | 742.5 | 9 407.3      | 7.9                       | 63.4                       |

(a) Trend estimates for May 1998 to October 1998 have been revised.



## UNEMPLOYED PERSONS: Original

| Month       | NUMBER OF UNEMPLOYED PERSONS..... |                                       |                            |                      |       | UNEMPLOYMENT RATE.....          |                                       |                            |                      |       | UNEMPLOYMENT TO POPULATION RATIO |                                       |
|-------------|-----------------------------------|---------------------------------------|----------------------------|----------------------|-------|---------------------------------|---------------------------------------|----------------------------|----------------------|-------|----------------------------------|---------------------------------------|
|             | Aged 15-19 looking for f/t work   | Aged 20 and over looking for f/t work | Total looking for f/t work | Looking for p/t work | Total | Aged 15-19 looking for f/t work | Aged 20 and over looking for f/t work | Total looking for f/t work | Looking for p/t work | Total | Aged 15-19 looking for f/t work  | Aged 20 and over looking for f/t work |
|             | '000                              | '000                                  | '000                       | '000                 | '000  | %                               | %                                     | %                          | %                    | %     | %                                | %                                     |
| MALES       |                                   |                                       |                            |                      |       |                                 |                                       |                            |                      |       |                                  |                                       |
| <b>1997</b> |                                   |                                       |                            |                      |       |                                 |                                       |                            |                      |       |                                  |                                       |
| September   | 44.7                              | 354.8                                 | 399.5                      | 70.0                 | 469.5 | 24.0                            | 8.0                                   | 8.6                        | 10.8                 | 8.9   | 6.8                              | 5.4                                   |
| October     | 44.7                              | 325.5                                 | 370.2                      | 56.5                 | 426.7 | 23.3                            | 7.4                                   | 8.0                        | 8.9                  | 8.1   | 6.8                              | 5.0                                   |
| November    | 43.7                              | 334.5                                 | 378.3                      | 59.0                 | 437.2 | 23.9                            | 7.5                                   | 8.2                        | 9.2                  | 8.3   | 6.6                              | 5.1                                   |
| December    | 56.9                              | 323.1                                 | 380.0                      | 66.5                 | 446.5 | 27.2                            | 7.2                                   | 8.1                        | 10.2                 | 8.4   | 8.6                              | 4.9                                   |
| <b>1998</b> |                                   |                                       |                            |                      |       |                                 |                                       |                            |                      |       |                                  |                                       |
| January     | 59.2                              | 358.6                                 | 417.8                      | 59.9                 | 477.8 | 26.9                            | 8.0                                   | 8.9                        | 10.0                 | 9.0   | 8.9                              | 5.5                                   |
| February    | 52.3                              | 360.7                                 | 412.9                      | 70.0                 | 482.9 | 25.3                            | 8.1                                   | 8.8                        | 11.2                 | 9.1   | 7.8                              | 5.5                                   |
| March       | 54.5                              | 341.7                                 | 396.2                      | 63.3                 | 459.5 | 26.8                            | 7.7                                   | 8.5                        | 9.7                  | 8.7   | 8.2                              | 5.2                                   |
| April       | 44.6                              | 314.4                                 | 359.0                      | 59.2                 | 418.2 | 23.5                            | 7.1                                   | 7.8                        | 9.2                  | 7.9   | 6.7                              | 4.8                                   |
| May         | 49.9                              | 327.5                                 | 377.4                      | 56.1                 | 433.5 | 25.8                            | 7.4                                   | 8.2                        | 8.6                  | 8.2   | 7.5                              | 5.0                                   |
| June        | 48.4                              | 332.9                                 | 381.3                      | 50.9                 | 432.2 | 25.8                            | 7.5                                   | 8.2                        | 7.7                  | 8.2   | 7.2                              | 5.0                                   |
| July        | 48.1                              | 334.0                                 | 382.2                      | 50.5                 | 432.7 | 25.4                            | 7.4                                   | 8.2                        | 8.1                  | 8.2   | 7.2                              | 5.1                                   |
| August      | 46.9                              | 331.7                                 | 378.7                      | 58.6                 | 437.2 | 25.5                            | 7.5                                   | 8.2                        | 9.1                  | 8.3   | 7.0                              | 5.0                                   |
| September   | 48.1                              | 338.4                                 | 386.5                      | 58.9                 | 445.4 | 25.8                            | 7.5                                   | 8.2                        | 8.8                  | 8.3   | 7.2                              | 5.1                                   |
| October     | 41.8                              | 300.9                                 | 342.7                      | 53.8                 | 396.6 | 22.7                            | 6.7                                   | 7.4                        | 8.1                  | 7.5   | 6.2                              | 4.5                                   |
| November    | 43.1                              | 318.1                                 | 361.2                      | 51.7                 | 412.9 | 23.8                            | 7.1                                   | 7.8                        | 7.8                  | 7.8   | 6.4                              | 4.8                                   |
| FEMALES     |                                   |                                       |                            |                      |       |                                 |                                       |                            |                      |       |                                  |                                       |
| <b>1997</b> |                                   |                                       |                            |                      |       |                                 |                                       |                            |                      |       |                                  |                                       |
| September   | 29.7                              | 183.6                                 | 213.3                      | 110.2                | 323.5 | 28.0                            | 8.4                                   | 9.3                        | 6.3                  | 8.0   | 4.7                              | 2.7                                   |
| October     | 30.9                              | 177.2                                 | 208.1                      | 101.7                | 309.8 | 28.6                            | 8.2                                   | 9.1                        | 6.0                  | 7.8   | 4.9                              | 2.6                                   |
| November    | 34.1                              | 170.2                                 | 204.2                      | 95.3                 | 299.6 | 33.6                            | 7.8                                   | 8.9                        | 5.6                  | 7.5   | 5.4                              | 2.5                                   |
| December    | 45.1                              | 172.9                                 | 218.0                      | 99.1                 | 317.1 | 34.5                            | 7.8                                   | 9.3                        | 5.9                  | 7.9   | 7.1                              | 2.5                                   |
| <b>1998</b> |                                   |                                       |                            |                      |       |                                 |                                       |                            |                      |       |                                  |                                       |
| January     | 52.3                              | 183.8                                 | 236.0                      | 103.1                | 339.1 | 36.9                            | 8.4                                   | 10.2                       | 6.5                  | 8.7   | 8.3                              | 2.7                                   |
| February    | 43.3                              | 201.5                                 | 244.8                      | 114.7                | 359.5 | 34.2                            | 9.1                                   | 10.5                       | 6.9                  | 9.0   | 6.8                              | 3.0                                   |
| March       | 41.1                              | 189.4                                 | 230.5                      | 112.0                | 342.5 | 35.1                            | 8.6                                   | 10.0                       | 6.5                  | 8.5   | 6.5                              | 2.8                                   |
| April       | 35.0                              | 174.0                                 | 209.0                      | 109.5                | 318.6 | 31.4                            | 7.9                                   | 9.1                        | 6.3                  | 7.9   | 5.5                              | 2.5                                   |
| May         | 35.9                              | 176.4                                 | 212.4                      | 92.6                 | 304.9 | 33.7                            | 8.1                                   | 9.3                        | 5.3                  | 7.6   | 5.7                              | 2.6                                   |
| June        | 30.7                              | 169.0                                 | 199.7                      | 103.7                | 303.4 | 30.7                            | 7.7                                   | 8.7                        | 5.9                  | 7.5   | 4.8                              | 2.5                                   |
| July        | 31.1                              | 168.2                                 | 199.3                      | 95.9                 | 295.1 | 29.1                            | 7.5                                   | 8.5                        | 5.6                  | 7.3   | 4.9                              | 2.5                                   |
| August      | 30.2                              | 166.7                                 | 196.9                      | 93.8                 | 290.7 | 30.7                            | 7.6                                   | 8.6                        | 5.5                  | 7.2   | 4.7                              | 2.4                                   |
| September   | 30.0                              | 177.9                                 | 207.9                      | 112.3                | 320.2 | 29.6                            | 7.9                                   | 8.8                        | 6.3                  | 7.8   | 4.7                              | 2.6                                   |
| October     | 29.0                              | 155.0                                 | 184.0                      | 105.0                | 289.0 | 28.9                            | 7.0                                   | 8.0                        | 6.0                  | 7.1   | 4.6                              | 2.2                                   |
| November    | 31.3                              | 159.7                                 | 191.0                      | 106.6                | 297.6 | 30.2                            | 7.3                                   | 8.3                        | 6.1                  | 7.3   | 4.9                              | 2.3                                   |
| PERSONS     |                                   |                                       |                            |                      |       |                                 |                                       |                            |                      |       |                                  |                                       |
| <b>1997</b> |                                   |                                       |                            |                      |       |                                 |                                       |                            |                      |       |                                  |                                       |
| September   | 74.5                              | 538.4                                 | 612.8                      | 180.2                | 793.0 | 25.4                            | 8.1                                   | 8.8                        | 7.6                  | 8.5   | 5.8                              | 4.0                                   |
| October     | 75.6                              | 502.7                                 | 578.3                      | 158.1                | 736.4 | 25.2                            | 7.6                                   | 8.4                        | 6.8                  | 8.0   | 5.9                              | 3.8                                   |
| November    | 77.8                              | 504.7                                 | 582.5                      | 154.3                | 736.8 | 27.4                            | 7.6                                   | 8.4                        | 6.6                  | 8.0   | 6.0                              | 3.8                                   |
| December    | 102.0                             | 496.0                                 | 598.0                      | 165.7                | 763.6 | 30.0                            | 7.4                                   | 8.5                        | 7.1                  | 8.1   | 7.9                              | 3.7                                   |
| <b>1998</b> |                                   |                                       |                            |                      |       |                                 |                                       |                            |                      |       |                                  |                                       |
| January     | 111.5                             | 542.4                                 | 653.9                      | 163.0                | 816.9 | 30.8                            | 8.2                                   | 9.3                        | 7.4                  | 8.9   | 8.6                              | 4.1                                   |
| February    | 95.5                              | 562.2                                 | 657.7                      | 184.8                | 842.5 | 28.7                            | 8.4                                   | 9.4                        | 8.0                  | 9.1   | 7.4                              | 4.2                                   |
| March       | 95.6                              | 531.1                                 | 626.7                      | 175.3                | 802.0 | 29.8                            | 8.0                                   | 9.0                        | 7.4                  | 8.6   | 7.3                              | 4.0                                   |
| April       | 79.7                              | 488.4                                 | 568.0                      | 168.8                | 736.8 | 26.4                            | 7.4                                   | 8.2                        | 7.1                  | 7.9   | 6.1                              | 3.6                                   |
| May         | 85.9                              | 503.9                                 | 589.8                      | 148.7                | 738.5 | 28.6                            | 7.6                                   | 8.5                        | 6.2                  | 7.9   | 6.6                              | 3.7                                   |
| June        | 79.1                              | 501.9                                 | 581.0                      | 154.6                | 735.6 | 27.5                            | 7.6                                   | 8.4                        | 6.4                  | 7.9   | 6.1                              | 3.7                                   |
| July        | 79.2                              | 502.2                                 | 581.4                      | 146.4                | 727.8 | 26.8                            | 7.5                                   | 8.3                        | 6.3                  | 7.8   | 6.1                              | 3.7                                   |
| August      | 77.1                              | 498.4                                 | 575.6                      | 152.4                | 727.9 | 27.3                            | 7.5                                   | 8.3                        | 6.5                  | 7.9   | 5.9                              | 3.7                                   |
| September   | 78.1                              | 516.3                                 | 594.4                      | 171.2                | 765.6 | 27.1                            | 7.6                                   | 8.4                        | 7.0                  | 8.1   | 6.0                              | 3.8                                   |
| October     | 70.8                              | 455.8                                 | 526.7                      | 158.9                | 685.6 | 24.9                            | 6.8                                   | 7.6                        | 6.6                  | 7.3   | 5.4                              | 3.4                                   |
| November    | 74.4                              | 477.8                                 | 552.2                      | 158.3                | 710.5 | 26.1                            | 7.2                                   | 7.9                        | 6.6                  | 7.6   | 5.7                              | 3.5                                   |

## UNEMPLOYED PERSONS: Seasonally adjusted

| Month       | NUMBER OF UNEMPLOYED PERSONS....     |  |                                 |                           |            | UNEMPLOYMENT RATE.....            |   |                              |                        |         | UNEMPLOYMENT TO POPULATION RATIO  |   |
|-------------|--------------------------------------|--|---------------------------------|---------------------------|------------|-----------------------------------|---|------------------------------|------------------------|---------|-----------------------------------|---|
|             | Aged 15-19 looking for f/t work '000 | Aged 20 and over looking for f/t work '000 | Total looking for f/t work '000 | Looking for p/t work '000 | Total '000 | Aged 15-19 looking for f/t work % | Aged 20 and over looking for f/t work % | Total looking for f/t work % | Looking for p/t work % | Total % | Aged 15-19 looking for f/t work % | Aged 20 and over looking for f/t work % |
| MALES       |                                      |  |                                 |                           |            |                                   |   |                              |                        |         |                                   |   |
| <b>1997</b> |                                      |  |                                 |                           |            |                                   |   |                              |                        |         |                                   |   |
| September   | 50.5                                 | 349.0                                      | 399.5                           | 64.7                      | 464.3      | 25.8                              | 7.9                                     | 8.6                          | 10.3                   | 8.8     | 7.6                               | 5.3                                     |
| October     | 50.2                                 | 341.1                                      | 391.4                           | 59.6                      | 451.0      | 24.9                              | 7.7                                     | 8.5                          | 9.4                    | 8.6     | 7.6                               | 5.2                                     |
| November    | 48.2                                 | 343.3                                      | 391.5                           | 66.4                      | 457.9      | 24.6                              | 7.7                                     | 8.4                          | 10.2                   | 8.7     | 7.3                               | 5.2                                     |
| December    | 48.2                                 | 334.3                                      | 382.5                           | 62.6                      | 445.1      | 25.6                              | 7.5                                     | 8.3                          | 9.6                    | 8.4     | 7.2                               | 5.1                                     |
| <b>1998</b> |                                      |  |                                 |                           |            |                                   |   |                              |                        |         |                                   |   |
| January     | 47.4                                 | 331.2                                      | 378.6                           | 54.9                      | 433.5      | 24.5                              | 7.4                                     | 8.1                          | 8.8                    | 8.2     | 7.1                               | 5.0                                     |
| February    | 45.8                                 | 333.4                                      | 379.2                           | 64.8                      | 444.0      | 23.8                              | 7.5                                     | 8.2                          | 10.0                   | 8.4     | 6.9                               | 5.1                                     |
| March       | 54.2                                 | 333.7                                      | 387.9                           | 54.0                      | 441.8      | 26.7                              | 7.5                                     | 8.3                          | 8.5                    | 8.4     | 8.1                               | 5.1                                     |
| April       | 45.8                                 | 320.1                                      | 365.8                           | 56.7                      | 422.5      | 24.4                              | 7.2                                     | 7.9                          | 9.0                    | 8.0     | 6.8                               | 4.9                                     |
| May         | 49.2                                 | 330.6                                      | 379.9                           | 58.9                      | 438.8      | 24.7                              | 7.4                                     | 8.2                          | 9.0                    | 8.3     | 7.4                               | 5.0                                     |
| June        | 49.8                                 | 341.7                                      | 391.5                           | 56.3                      | 447.8      | 25.1                              | 7.7                                     | 8.4                          | 8.7                    | 8.4     | 7.4                               | 5.2                                     |
| July        | 53.3                                 | 348.5                                      | 401.8                           | 57.2                      | 459.0      | 27.7                              | 7.8                                     | 8.6                          | 8.9                    | 8.6     | 8.0                               | 5.3                                     |
| August      | 53.4                                 | 333.6                                      | 387.1                           | 66.3                      | 453.3      | 26.8                              | 7.5                                     | 8.3                          | 10.4                   | 8.6     | 8.0                               | 5.0                                     |
| September   | 54.4                                 | 332.5                                      | 386.9                           | 54.2                      | 441.1      | 27.7                              | 7.4                                     | 8.2                          | 8.4                    | 8.3     | 8.1                               | 5.0                                     |
| October     | 47.0                                 | 315.3                                      | 362.3                           | 56.9                      | 419.2      | 24.3                              | 7.0                                     | 7.8                          | 8.6                    | 7.9     | 7.0                               | 4.8                                     |
| November    | 47.5                                 | 326.4                                      | 373.9                           | 58.0                      | 431.9      | 24.5                              | 7.3                                     | 8.0                          | 8.7                    | 8.1     | 7.1                               | 4.9                                     |
| FEMALES     |                                      |  |                                 |                           |            |                                   |   |                              |                        |         |                                   |   |
| <b>1997</b> |                                      |  |                                 |                           |            |                                   |   |                              |                        |         |                                   |   |
| September   | 33.1                                 | 185.1                                      | 218.3                           | 104.6                     | 322.9      | 30.0                              | 8.5                                     | 9.5                          | 6.2                    | 8.1     | 5.3                               | 2.7                                     |
| October     | 35.9                                 | 182.9                                      | 218.7                           | 103.8                     | 322.6      | 32.0                              | 8.4                                     | 9.6                          | 6.1                    | 8.1     | 5.7                               | 2.7                                     |
| November    | 37.9                                 | 181.1                                      | 219.0                           | 101.8                     | 320.8      | 34.6                              | 8.3                                     | 9.5                          | 6.0                    | 8.0     | 6.0                               | 2.7                                     |
| December    | 36.9                                 | 178.3                                      | 215.2                           | 101.2                     | 316.4      | 32.5                              | 8.1                                     | 9.3                          | 6.0                    | 7.9     | 5.8                               | 2.6                                     |
| <b>1998</b> |                                      |  |                                 |                           |            |                                   |   |                              |                        |         |                                   |   |
| January     | 41.1                                 | 173.4                                      | 214.5                           | 106.9                     | 321.3      | 34.7                              | 7.9                                     | 9.3                          | 6.3                    | 8.0     | 6.5                               | 2.5                                     |
| February    | 35.4                                 | 174.2                                      | 209.5                           | 97.4                      | 306.9      | 30.7                              | 8.0                                     | 9.1                          | 5.7                    | 7.7     | 5.6                               | 2.6                                     |
| March       | 40.1                                 | 181.4                                      | 221.6                           | 97.0                      | 318.6      | 33.3                              | 8.3                                     | 9.6                          | 5.8                    | 8.0     | 6.3                               | 2.7                                     |
| April       | 37.1                                 | 170.8                                      | 208.0                           | 106.8                     | 314.7      | 31.4                              | 7.8                                     | 9.0                          | 6.2                    | 7.8     | 5.9                               | 2.5                                     |
| May         | 37.6                                 | 181.9                                      | 219.5                           | 95.6                      | 315.1      | 33.6                              | 8.3                                     | 9.5                          | 5.6                    | 7.8     | 5.9                               | 2.7                                     |
| June        | 32.7                                 | 175.1                                      | 207.8                           | 112.2                     | 320.1      | 30.7                              | 7.9                                     | 9.0                          | 6.5                    | 7.9     | 5.1                               | 2.6                                     |
| July        | 36.6                                 | 175.5                                      | 212.0                           | 106.0                     | 318.1      | 33.6                              | 7.8                                     | 9.0                          | 6.2                    | 7.8     | 5.8                               | 2.6                                     |
| August      | 33.0                                 | 174.1                                      | 207.2                           | 100.5                     | 307.6      | 30.9                              | 7.8                                     | 8.8                          | 5.8                    | 7.6     | 5.2                               | 2.5                                     |
| September   | 33.5                                 | 179.3                                      | 212.8                           | 106.6                     | 319.5      | 31.7                              | 8.0                                     | 9.1                          | 6.2                    | 7.9     | 5.3                               | 2.6                                     |
| October     | 33.5                                 | 159.9                                      | 193.4                           | 107.2                     | 300.6      | 32.2                              | 7.2                                     | 8.4                          | 6.1                    | 7.4     | 5.3                               | 2.3                                     |
| November    | 34.7                                 | 170.1                                      | 204.8                           | 114.1                     | 318.9      | 31.0                              | 7.7                                     | 8.9                          | 6.6                    | 7.9     | 5.4                               | 2.5                                     |
| PERSONS     |                                      |  |                                 |                           |            |                                   |   |                              |                        |         |                                   |   |
| <b>1997</b> |                                      |  |                                 |                           |            |                                   |   |                              |                        |         |                                   |   |
| September   | 83.6                                 | 534.2                                      | 617.8                           | 169.3                     | 787.1      | 27.3                              | 8.1                                     | 8.9                          | 7.3                    | 8.5     | 6.5                               | 4.0                                     |
| October     | 86.1                                 | 524.0                                      | 610.1                           | 163.4                     | 773.5      | 27.4                              | 7.9                                     | 8.8                          | 7.0                    | 8.4     | 6.7                               | 3.9                                     |
| November    | 86.1                                 | 524.4                                      | 610.5                           | 168.2                     | 778.7      | 28.1                              | 7.9                                     | 8.8                          | 7.2                    | 8.4     | 6.7                               | 3.9                                     |
| December    | 85.1                                 | 512.6                                      | 597.7                           | 163.8                     | 761.5      | 28.2                              | 7.7                                     | 8.6                          | 7.0                    | 8.2     | 6.6                               | 3.8                                     |
| <b>1998</b> |                                      |  |                                 |                           |            |                                   |   |                              |                        |         |                                   |   |
| January     | 88.5                                 | 504.6                                      | 593.1                           | 161.8                     | 754.8      | 28.4                              | 7.6                                     | 8.5                          | 7.0                    | 8.1     | 6.8                               | 3.8                                     |
| February    | 81.2                                 | 507.6                                      | 588.7                           | 162.2                     | 751.0      | 26.4                              | 7.7                                     | 8.5                          | 6.9                    | 8.1     | 6.2                               | 3.8                                     |
| March       | 94.3                                 | 515.1                                      | 609.4                           | 151.0                     | 760.4      | 29.2                              | 7.8                                     | 8.8                          | 6.5                    | 8.2     | 7.3                               | 3.8                                     |
| April       | 82.9                                 | 490.9                                      | 573.8                           | 163.4                     | 737.2      | 27.1                              | 7.4                                     | 8.2                          | 7.0                    | 7.9     | 6.4                               | 3.7                                     |
| May         | 86.9                                 | 512.6                                      | 599.4                           | 154.4                     | 753.9      | 27.9                              | 7.7                                     | 8.6                          | 6.5                    | 8.1     | 6.7                               | 3.8                                     |
| June        | 82.5                                 | 516.8                                      | 599.3                           | 168.5                     | 767.8      | 27.1                              | 7.7                                     | 8.6                          | 7.1                    | 8.2     | 6.3                               | 3.8                                     |
| July        | 89.9                                 | 523.9                                      | 613.8                           | 163.2                     | 777.0      | 29.9                              | 7.8                                     | 8.7                          | 6.9                    | 8.3     | 6.9                               | 3.9                                     |
| August      | 86.5                                 | 507.8                                      | 594.2                           | 166.7                     | 761.0      | 28.2                              | 7.6                                     | 8.5                          | 7.0                    | 8.1     | 6.6                               | 3.8                                     |
| September   | 87.9                                 | 511.8                                      | 599.7                           | 160.9                     | 760.6      | 29.1                              | 7.6                                     | 8.5                          | 6.8                    | 8.1     | 6.7                               | 3.8                                     |
| October     | 80.5                                 | 475.2                                      | 555.7                           | 164.1                     | 719.8      | 27.0                              | 7.1                                     | 8.0                          | 6.8                    | 7.7     | 6.1                               | 3.5                                     |
| November    | 82.2                                 | 496.5                                      | 578.7                           | 172.1                     | 750.8      | 26.9                              | 7.4                                     | 8.3                          | 7.1                    | 8.0     | 6.3                               | 3.7                                     |

## UNEMPLOYED PERSONS: Trend(a)

| Month       | NUMBER OF UNEMPLOYED PERSONS.....      |  |                                   |                             |              | UNEMPLOYMENT RATE.....                 |  |                                   |                             |              | UNEMPLOYMENT TO POPULATION RATIO       |  |
|-------------|--|--|-----------------------------------|-----------------------------|--------------|--|--|-----------------------------------|-----------------------------|--------------|--|--|
|             | <i>Aged 15-19 looking for f/t work</i> | <i>Aged 20 and over looking for f/t work</i> | <i>Total looking for f/t work</i> | <i>Looking for p/t work</i> | <i>Total</i> | <i>Aged 15-19 looking for f/t work</i> | <i>Aged 20 and over looking for f/t work</i> | <i>Total looking for f/t work</i> | <i>Looking for p/t work</i> | <i>Total</i> | <i>Aged 15-19 looking for f/t work</i> | <i>Aged 20 and over looking for f/t work</i> |
|             | '000                                   | '000   | '000                              | '000                        | '000         | %                                      | %  | %                                 | %                           | %            | %                                      | %  |
| MALES       |  |  |                                   |                             |              |  |  |                                   |                             |              |  |  |
| <b>1997</b> |  |  |                                   |                             |              |  |  |                                   |                             |              |  |  |
| September   | 50.1                                   | 349.7  | 399.8                             | 60.6                        | 460.4        | 25.6                                   | 7.9  | 8.7                               | 9.6                         | 8.8          | 7.6                                    | 5.4  |
| October     | 49.5                                   | 345.5  | 394.9                             | 61.8                        | 456.7        | 25.3                                   | 7.8  | 8.5                               | 9.7                         | 8.7          | 7.5                                    | 5.3  |
| November    | 48.8                                   | 340.8  | 389.6                             | 62.2                        | 451.8        | 25.0                                   | 7.7  | 8.4                               | 9.7                         | 8.6          | 7.4                                    | 5.2  |
| December    | 48.3                                   | 336.2  | 384.6                             | 61.7                        | 446.3        | 24.9                                   | 7.6  | 8.3                               | 9.6                         | 8.5          | 7.3                                    | 5.1  |
| <b>1998</b> |  |  |                                   |                             |              |  |  |                                   |                             |              |  |  |
| January     | 48.1                                   | 332.4  | 380.5                             | 60.5                        | 441.0        | 24.8                                   | 7.5  | 8.2                               | 9.5                         | 8.4          | 7.2                                    | 5.1  |
| February    | 48.1                                   | 330.3  | 378.4                             | 58.9                        | 437.3        | 24.8                                   | 7.4  | 8.2                               | 9.2                         | 8.3          | 7.2                                    | 5.0  |
| March       | 48.4                                   | 330.0  | 378.4                             | 57.7                        | 436.1        | 24.9                                   | 7.4  | 8.1                               | 9.0                         | 8.3          | 7.2                                    | 5.0  |
| April       | 49.1                                   | 331.7  | 380.8                             | 57.4                        | 438.1        | 25.1                                   | 7.5  | 8.2                               | 9.0                         | 8.3          | 7.3                                    | 5.0  |
| May         | 50.1                                   | 334.4  | 384.5                             | 57.6                        | 442.1        | 25.5                                   | 7.5  | 8.3                               | 9.0                         | 8.4          | 7.5                                    | 5.1  |
| June        | 51.1                                   | 336.4  | 387.5                             | 58.1                        | 445.6        | 26.0                                   | 7.5  | 8.3                               | 9.0                         | 8.4          | 7.6                                    | 5.1  |
| July        | 51.7                                   | 336.5  | 388.2                             | 58.5                        | 446.7        | 26.3                                   | 7.5  | 8.3                               | 9.1                         | 8.4          | 7.7                                    | 5.1  |
| August      | 51.7                                   | 334.7  | 386.4                             | 58.7                        | 445.1        | 26.4                                   | 7.5  | 8.3                               | 9.1                         | 8.4          | 7.7                                    | 5.1  |
| September   | 51.3                                   | 331.4  | 382.7                             | 58.5                        | 441.2        | 26.2                                   | 7.4  | 8.2                               | 9.0                         | 8.3          | 7.6                                    | 5.0  |
| October     | 50.6                                   | 327.9  | 378.5                             | 58.1                        | 436.6        | 25.9                                   | 7.3  | 8.1                               | 8.9                         | 8.2          | 7.5                                    | 4.9  |
| November    | 49.5                                   | 323.8  | 373.3                             | 57.7                        | 431.0        | 25.5                                   | 7.2  | 8.0                               | 8.7                         | 8.1          | 7.4                                    | 4.9  |
| FEMALES     |  |  |                                   |                             |              |  |  |                                   |                             |              |  |  |
| <b>1997</b> |  |  |                                   |                             |              |  |  |                                   |                             |              |  |  |
| September   | 34.4                                   | 185.7  | 220.1                             | 105.6                       | 325.7        | 31.1                                   | 8.5  | 9.6                               | 6.3                         | 8.2          | 5.5                                    | 2.7  |
| October     | 35.6                                   | 182.9  | 218.5                             | 104.2                       | 322.7        | 31.9                                   | 8.4  | 9.5                               | 6.2                         | 8.1          | 5.7                                    | 2.7  |
| November    | 36.8                                   | 180.3  | 217.1                             | 103.1                       | 320.2        | 32.7                                   | 8.3  | 9.5                               | 6.1                         | 8.0          | 5.8                                    | 2.6  |
| December    | 37.8                                   | 178.0  | 215.9                             | 102.0                       | 317.9        | 33.1                                   | 8.2  | 9.4                               | 6.0                         | 8.0          | 6.0                                    | 2.6  |
| <b>1998</b> |  |  |                                   |                             |              |  |  |                                   |                             |              |  |  |
| January     | 38.4                                   | 176.5  | 215.0                             | 101.0                       | 316.0        | 33.1                                   | 8.1  | 9.3                               | 6.0                         | 7.9          | 6.1                                    | 2.6  |
| February    | 38.5                                   | 176.0  | 214.5                             | 100.7                       | 315.2        | 32.9                                   | 8.0  | 9.3                               | 5.9                         | 7.9          | 6.1                                    | 2.6  |
| March       | 38.1                                   | 176.0  | 214.1                             | 101.1                       | 315.2        | 32.6                                   | 8.0  | 9.3                               | 5.9                         | 7.9          | 6.0                                    | 2.6  |
| April       | 37.4                                   | 176.5  | 213.9                             | 101.9                       | 315.7        | 32.3                                   | 8.0  | 9.2                               | 6.0                         | 7.9          | 5.9                                    | 2.6  |
| May         | 36.4                                   | 177.0  | 213.4                             | 102.8                       | 316.2        | 32.2                                   | 8.0  | 9.2                               | 6.0                         | 7.8          | 5.7                                    | 2.6  |
| June        | 35.5                                   | 176.8  | 212.2                             | 103.8                       | 316.0        | 32.2                                   | 8.0  | 9.1                               | 6.0                         | 7.8          | 5.6                                    | 2.6  |
| July        | 34.7                                   | 175.6  | 210.3                             | 104.9                       | 315.2        | 32.1                                   | 7.9  | 9.0                               | 6.1                         | 7.8          | 5.5                                    | 2.6  |
| August      | 34.1                                   | 173.9  | 208.0                             | 105.8                       | 313.9        | 31.9                                   | 7.8  | 8.9                               | 6.1                         | 7.7          | 5.4                                    | 2.5  |
| September   | 33.8                                   | 172.0  | 205.8                             | 106.9                       | 312.7        | 31.7                                   | 7.7  | 8.8                               | 6.2                         | 7.7          | 5.3                                    | 2.5  |
| October     | 33.7                                   | 170.1  | 203.8                             | 108.2                       | 312.0        | 31.6                                   | 7.7  | 8.8                               | 6.2                         | 7.7          | 5.3                                    | 2.5  |
| November    | 33.7                                   | 167.9  | 201.6                             | 109.9                       | 311.5        | 31.4                                   | 7.6  | 8.7                               | 6.3                         | 7.7          | 5.3                                    | 2.4  |
| PERSONS     |  |  |                                   |                             |              |  |  |                                   |                             |              |  |  |
| <b>1997</b> |  |  |                                   |                             |              |  |  |                                   |                             |              |  |  |
| September   | 84.5                                   | 535.4  | 619.8                             | 166.3                       | 786.1        | 27.6                                   | 8.1  | 9.0                               | 7.2                         | 8.5          | 6.5                                    | 4.0  |
| October     | 85.1                                   | 528.4  | 613.4                             | 166.0                       | 779.4        | 27.7                                   | 8.0  | 8.9                               | 7.1                         | 8.4          | 6.6                                    | 4.0  |
| November    | 85.6                                   | 521.0  | 606.7                             | 165.3                       | 772.0        | 27.8                                   | 7.9  | 8.8                               | 7.1                         | 8.3          | 6.6                                    | 3.9  |
| December    | 86.2                                   | 514.3  | 600.4                             | 163.7                       | 764.2        | 27.9                                   | 7.8  | 8.7                               | 7.0                         | 8.2          | 6.6                                    | 3.8  |
| <b>1998</b> |  |  |                                   |                             |              |  |  |                                   |                             |              |  |  |
| January     | 86.5                                   | 508.9  | 595.5                             | 161.5                       | 757.0        | 27.9                                   | 7.7  | 8.6                               | 6.9                         | 8.2          | 6.7                                    | 3.8  |
| February    | 86.6                                   | 506.3  | 592.9                             | 159.6                       | 752.5        | 27.8                                   | 7.6  | 8.5                               | 6.8                         | 8.1          | 6.7                                    | 3.8  |
| March       | 86.5                                   | 506.0  | 592.5                             | 158.8                       | 751.3        | 27.8                                   | 7.6  | 8.5                               | 6.8                         | 8.1          | 6.6                                    | 3.8  |
| April       | 86.5                                   | 508.2  | 594.7                             | 159.2                       | 753.9        | 27.8                                   | 7.6  | 8.5                               | 6.8                         | 8.1          | 6.6                                    | 3.8  |
| May         | 86.6                                   | 511.4  | 597.9                             | 160.4                       | 758.3        | 28.0                                   | 7.7  | 8.6                               | 6.8                         | 8.1          | 6.6                                    | 3.8  |
| June        | 86.6                                   | 513.2  | 599.7                             | 161.9                       | 761.6        | 28.2                                   | 7.7  | 8.6                               | 6.9                         | 8.1          | 6.6                                    | 3.8  |
| July        | 86.3                                   | 512.1  | 598.5                             | 163.4                       | 761.9        | 28.4                                   | 7.7  | 8.6                               | 6.9                         | 8.1          | 6.6                                    | 3.8  |
| August      | 85.8                                   | 508.6  | 594.4                             | 164.5                       | 758.9        | 28.3                                   | 7.6  | 8.5                               | 6.9                         | 8.1          | 6.6                                    | 3.8  |
| September   | 85.1                                   | 503.4  | 588.5                             | 165.5                       | 753.9        | 28.2                                   | 7.5  | 8.4                               | 6.9                         | 8.0          | 6.5                                    | 3.7  |
| October     | 84.3                                   | 498.0  | 582.3                             | 166.3                       | 748.6        | 27.9                                   | 7.4  | 8.3                               | 6.9                         | 8.0          | 6.4                                    | 3.7  |
| November    | 83.2                                   | 491.7  | 574.9                             | 167.6                       | 742.5        | 27.6                                   | 7.3  | 8.2                               | 7.0                         | 7.9          | 6.3                                    | 3.6  |

(a) Trend estimates for May 1998 to October 1998 have been revised.

PERSONS AGED 15 TO 19—Education and Labour Force: **Original**—November 1998

|   | EMPLOYED..... |              |              | UNEMPLOYED.....      |                      |              | Labour force | Not in labour force | Civilian population aged 15-19 | Unemployment rate | Participation rate |
|---|---------------|--------------|--------------|----------------------|----------------------|--------------|--------------|---------------------|--------------------------------|-------------------|--------------------|
|   | Full time     | Part time    | Total        | Looking for f/t work | Looking for p/t work | Total        |              |                     |                                |                   |                    |
|   | '000          | '000         | '000         | '000                 | '000                 | '000         | '000         | '000                | '000                           | %                 | %                  |
| .....   |               |              |              |                      |                      |              |              |                     |                                |                   |                    |
| ATTENDING NEITHER SCHOOL NOR A TERTIARY EDUCATIONAL INSTITUTION FULL TIME |               |              |              |                      |                      |              |              |                     |                                |                   |                    |
| Males   | 133.3         | 31.3         | 164.6        | 37.1                 | * 2.8                | 39.9         | 204.5        | 24.5                | 229.1                          | 19.5              | 89.3               |
| Females   | 69.7          | 45.9         | 115.7        | 26.3                 | * 3.4                | 29.7         | 145.4        | 34.1                | 179.6                          | 20.5              | 81.0               |
| Persons   | 203.0         | 77.3         | 280.3        | 63.4                 | 6.3                  | 69.7         | 350.0        | 58.7                | 408.6                          | 19.9              | 85.6               |
| .....   |               |              |              |                      |                      |              |              |                     |                                |                   |                    |
| ATTENDING A TERTIARY EDUCATIONAL INSTITUTION FULL TIME                    |               |              |              |                      |                      |              |              |                     |                                |                   |                    |
| Males   | * 3.6         | 34.3         | 37.9         | * 2.3                | * 3.1                | 5.4          | 43.3         | 35.4                | 78.7                           | 12.4              | 55.0               |
| Females   | * 2.0         | 50.3         | 52.2         | * 1.8                | 4.8                  | 6.6          | 58.8         | 31.6                | 90.4                           | 11.2              | 65.0               |
| Persons   | 5.6           | 84.5         | 90.1         | 4.0                  | 7.9                  | 12.0         | 102.1        | 67.1                | 169.2                          | 11.7              | 60.4               |
| .....   |               |              |              |                      |                      |              |              |                     |                                |                   |                    |
| ATTENDING SCHOOL  |               |              |              |                      |                      |              |              |                     |                                |                   |                    |
| Males   | * 0.9         | 98.4         | 99.3         | * 3.7                | 25.5                 | 29.2         | 128.5        | 236.5               | 364.9                          | 22.7              | 35.2               |
| Females   | * 0.7         | 136.0        | 136.7        | * 3.2                | 27.3                 | 30.6         | 167.2        | 200.5               | 367.8                          | 18.3              | 45.5               |
| Persons   | * 1.5         | 234.4        | 235.9        | 6.9                  | 52.8                 | 59.8         | 295.7        | 437.0               | 732.7                          | 20.2              | 40.4               |
| .....   |               |              |              |                      |                      |              |              |                     |                                |                   |                    |
| TOTAL   |               |              |              |                      |                      |              |              |                     |                                |                   |                    |
| Males   | 137.8         | 164.0        | 301.8        | 43.1                 | 31.5                 | 74.5         | 376.3        | 296.4               | 672.7                          | 19.8              | 55.9               |
| Females   | 72.4          | 232.2        | 304.6        | 31.3                 | 35.6                 | 66.9         | 371.5        | 266.3               | 637.8                          | 18.0              | 58.2               |
| <b>Persons</b>  | <b>210.1</b>  | <b>396.2</b> | <b>606.3</b> | <b>74.4</b>          | <b>67.0</b>          | <b>141.4</b> | <b>747.7</b> | <b>562.7</b>        | <b>1 310.5</b>                 | <b>18.9</b>       | <b>57.1</b>        |
| .....   |               |              |              |                      |                      |              |              |                     |                                |                   |                    |

LABOUR FORCE STATUS (AGED 15 & OVER)–States & Territories: **Original**–November 1998

|                              | EMPLOYED.....  |                |                | UNEMPLOYED.....      |                      |              | Labour force<br>'000 | Not in labour force<br>'000 | Civilian population aged 15 and over<br>'000 | Unemployment rate<br>% | Participation rate<br>% |
|------------------------------|----------------|----------------|----------------|----------------------|----------------------|--------------|----------------------|-----------------------------|--|------------------------|-------------------------|
|                              | Full time      | Part time      | Total          | Looking for f/t work | Looking for p/t work | Total        |                      |                             |  |                        |                         |
|                              | '000           | '000           | '000           | '000                 | '000                 | '000         |                      |                             |  |                        |                         |
| MALES                        |                |                |                |                      |                      |              |                      |                             |  |                        |                         |
| New South Wales              | 1 440.7        | 191.3          | 1 631.9        | 113.3                | 17.4                 | 130.6        | 1 762.5              | 705.6                       | 2 468.1                                      | 7.4                    | 71.4                    |
| Victoria                     | 1 053.1        | 161.3          | 1 214.4        | 83.5                 | 13.8                 | 97.3         | 1 311.7              | 501.9                       | 1 813.6                                      | 7.4                    | 72.3                    |
| Queensland                   | 817.2          | 114.3          | 931.5          | 69.2                 | 11.5                 | 80.7         | 1 012.2              | 349.5                       | 1 361.7                                      | 8.0                    | 74.3                    |
| South Australia              | 324.9          | 46.7           | 371.5          | 40.5                 | 2.6                  | 43.0         | 414.5                | 172.8                       | 587.3  | 10.4                   | 70.6                    |
| Western Australia            | 440.2          | 62.8           | 503.0          | 35.0                 | 4.2                  | 39.2         | 542.2                | 175.5                       | 717.7  | 7.2                    | 75.5                    |
| Tasmania                     | 94.7           | 14.6           | 109.3          | 12.2                 | * 0.7                | 12.9         | 122.1                | 59.1                        | 181.2  | 10.5                   | 67.4                    |
| Northern Territory           | 43.6           | 6.9            | 50.6           | 2.5                  | * 0.3                | 2.7          | 53.3                 | 15.2                        | 68.4   | 5.1                    | 77.8                    |
| Australian Capital Territory | 70.6           | 12.5           | 83.1           | 5.1                  | 1.4                  | 6.5          | 89.6                 | 26.4                        | 115.9  | 7.2                    | 77.2                    |
| <b>Australia</b>             | <b>4 284.9</b> | <b>610.3</b>   | <b>4 895.2</b> | <b>361.2</b>         | <b>51.7</b>          | <b>412.9</b> | <b>5 308.1</b>       | <b>2 006.0</b>              | <b>7 314.2</b>                               | <b>7.8</b>             | <b>72.6</b>             |
| FEMALES                      |                |                |                |                      |                      |              |                      |                             |  |                        |                         |
| New South Wales              | 730.1          | 501.5          | 1 231.6        | 61.6                 | 36.2                 | 97.8         | 1 329.4              | 1 224.0                     | 2 553.4                                      | 7.4                    | 52.1                    |
| Victoria                     | 518.7          | 418.0          | 936.8          | 49.9                 | 27.2                 | 77.1         | 1 013.8              | 878.0                       | 1 891.8                                      | 7.6                    | 53.6                    |
| Queensland                   | 397.2          | 320.2          | 717.5          | 37.6                 | 22.1                 | 59.6         | 777.1                | 608.4                       | 1 385.6                                      | 7.7                    | 56.1                    |
| South Australia              | 147.2          | 138.8          | 286.0          | 17.9                 | 7.5                  | 25.4         | 311.4                | 296.7                       | 608.1  | 8.2                    | 51.2                    |
| Western Australia            | 202.5          | 182.8          | 385.3          | 16.1                 | 8.8                  | 24.8         | 410.2                | 313.0                       | 723.2  | 6.1                    | 56.7                    |
| Tasmania                     | 41.2           | 43.5           | 84.7           | 4.9                  | 2.8                  | 7.7          | 92.4                 | 95.1                        | 187.5  | 8.3                    | 49.3                    |
| Northern Territory           | 28.9           | 13.3           | 42.1           | * 1.1                | * 0.7                | 1.7          | 43.9                 | 21.8                        | 65.7   | 3.9                    | 66.8                    |
| Australian Capital Territory | 46.5           | 27.5           | 73.9           | 1.9                  | 1.5                  | 3.4          | 77.3                 | 42.5                        | 119.8  | 4.4                    | 64.5                    |
| <b>Australia</b>             | <b>2 112.3</b> | <b>1 645.7</b> | <b>3 757.9</b> | <b>191.0</b>         | <b>106.6</b>         | <b>297.6</b> | <b>4 055.5</b>       | <b>3 479.6</b>              | <b>7 535.1</b>                               | <b>7.3</b>             | <b>53.8</b>             |
| PERSONS                      |                |                |                |                      |                      |              |                      |                             |  |                        |                         |
| New South Wales              | 2 170.8        | 692.8          | 2 863.5        | 174.9                | 53.6                 | 228.4        | 3 092.0              | 1 929.6                     | 5 021.6                                      | 7.4                    | 61.6                    |
| Victoria                     | 1 571.8        | 579.4          | 2 151.1        | 133.4                | 41.0                 | 174.4        | 2 325.5              | 1 379.9                     | 3 705.5                                      | 7.5                    | 62.8                    |
| Queensland                   | 1 214.4        | 434.5          | 1 648.9        | 106.8                | 33.6                 | 140.4        | 1 789.3              | 958.0                       | 2 747.3                                      | 7.8                    | 65.1                    |
| South Australia              | 472.0          | 185.5          | 657.5          | 58.4                 | 10.1                 | 68.4         | 725.9                | 469.5                       | 1 195.4                                      | 9.4                    | 60.7                    |
| Western Australia            | 642.7          | 245.7          | 888.3          | 51.1                 | 12.9                 | 64.0         | 952.4                | 488.6                       | 1 441.0                                      | 6.7                    | 66.1                    |
| Tasmania                     | 135.9          | 58.1           | 193.9          | 17.1                 | 3.4                  | 20.6         | 214.5                | 154.2                       | 368.7  | 9.6                    | 58.2                    |
| Northern Territory           | 72.5           | 20.2           | 92.7           | 3.5                  | * 0.9                | 4.5          | 97.1                 | 37.0                        | 134.1  | 4.6                    | 72.4                    |
| Australian Capital Territory | 117.1          | 40.0           | 157.0          | 7.0                  | 2.8                  | 9.8          | 166.9                | 68.9                        | 235.8  | 5.9                    | 70.8                    |
| <b>Australia</b>             | <b>6 397.1</b> | <b>2 256.0</b> | <b>8 653.1</b> | <b>552.2</b>         | <b>158.3</b>         | <b>710.5</b> | <b>9 363.7</b>       | <b>5 485.6</b>              | <b>14 849.3</b>                              | <b>7.6</b>             | <b>63.1</b>             |

UNEMPLOYED PERSONS—New South Wales, Victoria and Queensland: **Original**

| Month                  | NUMBER OF UNEMPLOYED PERSONS..... |                                       |                            |                      |       | UNEMPLOYMENT RATE.....          |                                       |                            |                      |       | UNEMPLOYMENT TO POPULATION RATIO |                                       |
|------------------------|-----------------------------------|---------------------------------------|----------------------------|----------------------|-------|---------------------------------|---------------------------------------|----------------------------|----------------------|-------|----------------------------------|---------------------------------------|
|                        | Aged 15-19 looking for f/t work   | Aged 20 and over looking for f/t work | Total looking for f/t work | Looking for p/t work | Total | Aged 15-19 looking for f/t work | Aged 20 and over looking for f/t work | Total looking for f/t work | Looking for p/t work | Total | Aged 15-19 looking for f/t work  | Aged 20 and over looking for f/t work |
|                        | '000                              | '000                                  | '000                       | '000                 | '000  | %                               | %                                     | %                          | %                    | %     | %                                | %                                     |
| <b>NEW SOUTH WALES</b> |                                   |                                       |                            |                      |       |                                 |                                       |                            |                      |       |                                  |                                       |
| <b>1997</b>            |                                   |                                       |                            |                      |       |                                 |                                       |                            |                      |       |                                  |                                       |
| September              | 20.1                              | 169.4                                 | 189.5                      | 54.2                 | 243.7 | 21.6                            | 7.5                                   | 8.1                        | 7.3                  | 7.9   | 4.7                              | 3.7                                   |
| October                | 24.7                              | 164.6                                 | 189.3                      | 46.9                 | 236.2 | 24.9                            | 7.4                                   | 8.1                        | 6.8                  | 7.8   | 5.8                              | 3.6                                   |
| November               | 22.0                              | 159.0                                 | 181.1                      | 44.8                 | 225.9 | 23.2                            | 7.1                                   | 7.7                        | 6.1                  | 7.4   | 5.2                              | 3.5                                   |
| December               | 27.5                              | 155.6                                 | 183.1                      | 47.6                 | 230.8 | 25.6                            | 6.9                                   | 7.7                        | 6.5                  | 7.4   | 6.4                              | 3.4                                   |
| <b>1998</b>            |                                   |                                       |                            |                      |       |                                 |                                       |                            |                      |       |                                  |                                       |
| January                | 35.2                              | 163.3                                 | 198.5                      | 45.8                 | 244.3 | 29.0                            | 7.3                                   | 8.4                        | 6.7                  | 8.0   | 8.2                              | 3.6                                   |
| February               | 28.3                              | 173.1                                 | 201.4                      | 61.1                 | 262.4 | 26.2                            | 7.8                                   | 8.6                        | 8.6                  | 8.6   | 6.6                              | 3.8                                   |
| March                  | 27.9                              | 169.2                                 | 197.1                      | 48.7                 | 245.8 | 25.6                            | 7.6                                   | 8.4                        | 6.7                  | 8.0   | 6.5                              | 3.7                                   |
| April                  | 23.1                              | 144.7                                 | 167.9                      | 51.2                 | 219.1 | 22.6                            | 6.5                                   | 7.2                        | 6.9                  | 7.1   | 5.4                              | 3.2                                   |
| May                    | 31.0                              | 153.3                                 | 184.2                      | 43.0                 | 227.2 | 29.2                            | 6.9                                   | 7.9                        | 5.8                  | 7.4   | 7.2                              | 3.4                                   |
| June                   | 26.4                              | 148.5                                 | 174.9                      | 48.1                 | 223.0 | 27.3                            | 6.6                                   | 7.5                        | 6.5                  | 7.2   | 6.1                              | 3.3                                   |
| July                   | 25.3                              | 150.3                                 | 175.5                      | 41.4                 | 216.9 | 26.2                            | 6.5                                   | 7.3                        | 5.8                  | 7.0   | 5.9                              | 3.3                                   |
| August                 | 24.7                              | 154.8                                 | 179.5                      | 41.8                 | 221.3 | 25.9                            | 6.9                                   | 7.7                        | 5.9                  | 7.3   | 5.7                              | 3.4                                   |
| September              | 23.2                              | 157.2                                 | 180.3                      | 52.4                 | 232.7 | 24.4                            | 6.8                                   | 7.5                        | 7.0                  | 7.4   | 5.4                              | 3.4                                   |
| October                | 22.3                              | 130.8                                 | 153.1                      | 49.1                 | 202.2 | 23.1                            | 5.8                                   | 6.5                        | 6.6                  | 6.5   | 5.2                              | 2.9                                   |
| November               | 21.6                              | 153.3                                 | 174.9                      | 53.6                 | 228.4 | 23.1                            | 6.8                                   | 7.5                        | 7.2                  | 7.4   | 5.0                              | 3.3                                   |
| <b>VICTORIA</b>        |                                   |                                       |                            |                      |       |                                 |                                       |                            |                      |       |                                  |                                       |
| <b>1997</b>            |                                   |                                       |                            |                      |       |                                 |                                       |                            |                      |       |                                  |                                       |
| September              | 14.7                              | 145.2                                 | 159.9                      | 51.7                 | 211.6 | 24.5                            | 8.8                                   | 9.3                        | 8.4                  | 9.1   | 4.6                              | 4.4                                   |
| October                | 16.7                              | 124.7                                 | 141.4                      | 42.5                 | 183.9 | 26.1                            | 7.6                                   | 8.3                        | 7.1                  | 8.0   | 5.3                              | 3.7                                   |
| November               | 18.0                              | 124.7                                 | 142.7                      | 41.8                 | 184.5 | 33.2                            | 7.6                                   | 8.4                        | 6.9                  | 8.0   | 5.7                              | 3.7                                   |
| December               | 26.4                              | 115.9                                 | 142.3                      | 49.3                 | 191.7 | 34.8                            | 7.0                                   | 8.2                        | 8.1                  | 8.2   | 8.3                              | 3.5                                   |
| <b>1998</b>            |                                   |                                       |                            |                      |       |                                 |                                       |                            |                      |       |                                  |                                       |
| January                | 26.2                              | 136.6                                 | 162.8                      | 48.9                 | 211.8 | 35.9                            | 8.2                                   | 9.4                        | 8.7                  | 9.2   | 8.3                              | 4.1                                   |
| February               | 23.1                              | 135.9                                 | 159.0                      | 48.5                 | 207.5 | 32.1                            | 8.1                                   | 9.1                        | 8.5                  | 8.9   | 7.3                              | 4.1                                   |
| March                  | 25.1                              | 133.4                                 | 158.5                      | 51.9                 | 210.4 | 37.3                            | 8.0                                   | 9.1                        | 8.5                  | 9.0   | 7.9                              | 4.0                                   |
| April                  | 19.8                              | 127.8                                 | 147.6                      | 47.3                 | 194.9 | 31.5                            | 7.6                                   | 8.5                        | 7.8                  | 8.3   | 6.2                              | 3.8                                   |
| May                    | 18.1                              | 130.8                                 | 149.0                      | 40.3                 | 189.3 | 31.2                            | 7.8                                   | 8.6                        | 6.6                  | 8.1   | 5.7                              | 3.9                                   |
| June                   | 17.3                              | 127.9                                 | 145.2                      | 43.2                 | 188.3 | 31.9                            | 7.7                                   | 8.5                        | 6.9                  | 8.0   | 5.4                              | 3.8                                   |
| July                   | 17.5                              | 125.5                                 | 143.1                      | 42.5                 | 185.5 | 29.5                            | 7.5                                   | 8.2                        | 7.0                  | 7.9   | 5.5                              | 3.7                                   |
| August                 | 17.6                              | 120.2                                 | 137.7                      | 47.3                 | 185.0 | 31.5                            | 7.2                                   | 8.0                        | 7.7                  | 7.9   | 5.5                              | 3.6                                   |
| September              | 19.0                              | 127.2                                 | 146.2                      | 50.2                 | 196.4 | 33.0                            | 7.5                                   | 8.4                        | 7.9                  | 8.2   | 6.0                              | 3.8                                   |
| October                | 15.2                              | 113.3                                 | 128.5                      | 44.2                 | 172.7 | 26.8                            | 6.8                                   | 7.5                        | 7.3                  | 7.4   | 4.8                              | 3.4                                   |
| November               | 16.9                              | 116.5                                 | 133.4                      | 41.0                 | 174.4 | 28.6                            | 7.1                                   | 7.8                        | 6.6                  | 7.5   | 5.3                              | 3.4                                   |
| <b>QUEENSLAND</b>      |                                   |                                       |                            |                      |       |                                 |                                       |                            |                      |       |                                  |                                       |
| <b>1997</b>            |                                   |                                       |                            |                      |       |                                 |                                       |                            |                      |       |                                  |                                       |
| September              | 18.2                              | 102.3                                 | 120.5                      | 37.0                 | 157.4 | 29.6                            | 8.4                                   | 9.4                        | 8.0                  | 9.0   | 7.3                              | 4.2                                   |
| October                | 16.1                              | 99.6                                  | 115.7                      | 34.9                 | 150.6 | 27.0                            | 8.1                                   | 9.0                        | 7.5                  | 8.6   | 6.5                              | 4.1                                   |
| November               | 18.3                              | 103.9                                 | 122.2                      | 33.6                 | 155.9 | 31.8                            | 8.4                                   | 9.5                        | 7.4                  | 8.9   | 7.3                              | 4.2                                   |
| December               | 23.1                              | 102.0                                 | 125.0                      | 31.3                 | 156.3 | 32.4                            | 8.1                                   | 9.4                        | 7.1                  | 8.9   | 9.2                              | 4.2                                   |
| <b>1998</b>            |                                   |                                       |                            |                      |       |                                 |                                       |                            |                      |       |                                  |                                       |
| January                | 22.6                              | 111.8                                 | 134.4                      | 30.8                 | 165.2 | 30.5                            | 9.0                                   | 10.2                       | 7.3                  | 9.5   | 9.0                              | 4.6                                   |
| February               | 18.0                              | 122.9                                 | 140.9                      | 35.5                 | 176.5 | 26.7                            | 9.8                                   | 10.6                       | 7.8                  | 9.9   | 7.1                              | 5.0                                   |
| March                  | 17.9                              | 105.1                                 | 123.0                      | 34.5                 | 157.5 | 28.0                            | 8.5                                   | 9.5                        | 7.4                  | 9.0   | 7.1                              | 4.3                                   |
| April                  | 18.4                              | 100.0                                 | 118.4                      | 35.1                 | 153.5 | 28.2                            | 8.1                                   | 9.1                        | 7.6                  | 8.7   | 7.3                              | 4.1                                   |
| May                    | 15.6                              | 101.5                                 | 117.1                      | 30.2                 | 147.3 | 25.3                            | 8.3                                   | 9.1                        | 6.4                  | 8.4   | 6.2                              | 4.1                                   |
| June                   | 16.6                              | 103.2                                 | 119.8                      | 32.4                 | 152.2 | 26.3                            | 8.3                                   | 9.2                        | 6.8                  | 8.6   | 6.5                              | 4.2                                   |
| July                   | 16.6                              | 105.7                                 | 122.3                      | 28.9                 | 151.2 | 25.0                            | 8.5                                   | 9.3                        | 6.4                  | 8.6   | 6.5                              | 4.3                                   |
| August                 | 15.9                              | 100.0                                 | 115.9                      | 31.6                 | 147.5 | 27.0                            | 8.1                                   | 9.0                        | 6.8                  | 8.4   | 6.2                              | 4.0                                   |
| September              | 16.8                              | 104.9                                 | 121.7                      | 35.4                 | 157.1 | 26.3                            | 8.4                                   | 9.3                        | 7.5                  | 8.8   | 6.6                              | 4.2                                   |
| October                | 15.5                              | 98.1                                  | 113.6                      | 34.1                 | 147.7 | 24.8                            | 7.8                                   | 8.7                        | 7.1                  | 8.2   | 6.0                              | 3.9                                   |
| November               | 16.5                              | 90.3                                  | 106.8                      | 33.6                 | 140.4 | 26.8                            | 7.2                                   | 8.1                        | 7.2                  | 7.8   | 6.5                              | 3.6                                   |

UNEMPLOYED PERSONS—South Australia, Western Australia and Tasmania: **Original**

| Month             | NUMBER OF UNEMPLOYED PERSONS..... |                                       |                            |                      |       | UNEMPLOYMENT RATE.....          |                                       |                            |                      |       | UNEMPLOYMENT TO POPULATION RATIO |                                       |
|-------------------|-----------------------------------|---------------------------------------|----------------------------|----------------------|-------|---------------------------------|---------------------------------------|----------------------------|----------------------|-------|----------------------------------|---------------------------------------|
|                   | Aged 15-19 looking for f/t work   | Aged 20 and over looking for f/t work | Total looking for f/t work | Looking for p/t work | Total | Aged 15-19 looking for f/t work | Aged 20 and over looking for f/t work | Total looking for f/t work | Looking for p/t work | Total | Aged 15-19 looking for f/t work  | Aged 20 and over looking for f/t work |
|                   | '000                              | '000                                  | '000                       | '000                 | '000  | %                               | %                                     | %                          | %                    | %     | %                                | %                                     |
| SOUTH AUSTRALIA   |                                   |                                       |                            |                      |       |                                 |                                       |                            |                      |       |                                  |                                       |
| <b>1997</b>       |                                   |                                       |                            |                      |       |                                 |                                       |                            |                      |       |                                  |                                       |
| September         | 7.2                               | 51.2                                  | 58.4                       | 13.8                 | 72.2  | 31.9                            | 10.1                                  | 11.1                       | 6.6                  | 9.8   | 7.3                              | 4.7                                   |
| October           | 7.4                               | 49.8                                  | 57.1                       | 12.7                 | 69.8  | 32.3                            | 9.9                                   | 10.9                       | 6.2                  | 9.5   | 7.5                              | 4.6                                   |
| November          | 6.5                               | 50.8                                  | 57.4                       | 11.9                 | 69.3  | 28.8                            | 10.0                                  | 10.8                       | 5.8                  | 9.5   | 6.6                              | 4.7                                   |
| December          | 8.9                               | 49.7                                  | 58.5                       | 12.5                 | 71.0  | 35.0                            | 9.6                                   | 10.8                       | 6.4                  | 9.7   | 9.0                              | 4.6                                   |
| <b>1998</b>       |                                   |                                       |                            |                      |       |                                 |                                       |                            |                      |       |                                  |                                       |
| January           | 9.2                               | 55.0                                  | 64.2                       | 14.7                 | 78.9  | 32.5                            | 10.8                                  | 12.0                       | 7.9                  | 10.9  | 9.3                              | 5.0                                   |
| February          | 8.5                               | 52.9                                  | 61.4                       | 15.5                 | 76.9  | 34.4                            | 10.5                                  | 11.6                       | 7.9                  | 10.6  | 8.6                              | 4.9                                   |
| March             | 8.8                               | 50.5                                  | 59.3                       | 14.4                 | 73.6  | 37.6                            | 10.1                                  | 11.3                       | 7.4                  | 10.2  | 8.9                              | 4.6                                   |
| April             | 8.7                               | 47.1                                  | 55.8                       | 11.8                 | 67.6  | 38.0                            | 9.5                                   | 10.8                       | 6.0                  | 9.4   | 8.7                              | 4.3                                   |
| May               | 9.1                               | 50.3                                  | 59.5                       | 12.9                 | 72.4  | 38.2                            | 10.2                                  | 11.5                       | 6.7                  | 10.2  | 9.2                              | 4.6                                   |
| June              | 6.5                               | 50.5                                  | 56.9                       | 11.2                 | 68.1  | 29.7                            | 10.2                                  | 11.0                       | 5.8                  | 9.6   | 6.5                              | 4.6                                   |
| July              | 7.9                               | 49.0                                  | 56.9                       | 12.3                 | 69.2  | 35.5                            | 9.8                                   | 10.9                       | 6.6                  | 9.8   | 8.0                              | 4.5                                   |
| August            | 8.4                               | 53.3                                  | 61.7                       | 10.4                 | 72.1  | 36.6                            | 10.6                                  | 11.7                       | 5.5                  | 10.1  | 8.4                              | 4.9                                   |
| September         | 8.5                               | 53.5                                  | 62.0                       | 10.5                 | 72.6  | 36.7                            | 10.4                                  | 11.6                       | 5.5                  | 10.0  | 8.6                              | 4.9                                   |
| October           | 7.6                               | 45.5                                  | 53.1                       | 12.3                 | 65.4  | 35.4                            | 9.0                                   | 10.1                       | 6.2                  | 9.1   | 7.6                              | 4.2                                   |
| November          | 8.3                               | 50.1                                  | 58.4                       | 10.1                 | 68.4  | 36.2                            | 9.9                                   | 11.0                       | 5.1                  | 9.4   | 8.3                              | 4.6                                   |
| WESTERN AUSTRALIA |                                   |                                       |                            |                      |       |                                 |                                       |                            |                      |       |                                  |                                       |
| <b>1997</b>       |                                   |                                       |                            |                      |       |                                 |                                       |                            |                      |       |                                  |                                       |
| September         | 8.6                               | 42.9                                  | 51.5                       | 13.7                 | 65.2  | 21.5                            | 6.5                                   | 7.4                        | 5.7                  | 6.9   | 6.6                              | 3.4                                   |
| October           | 5.9                               | 36.9                                  | 42.8                       | 12.6                 | 55.4  | 15.3                            | 5.8                                   | 6.3                        | 5.2                  | 6.0   | 4.5                              | 2.9                                   |
| November          | 8.4                               | 39.2                                  | 47.6                       | 13.7                 | 61.4  | 21.5                            | 6.1                                   | 6.9                        | 5.7                  | 6.6   | 6.4                              | 3.1                                   |
| December          | 10.9                              | 43.3                                  | 54.1                       | 14.1                 | 68.2  | 26.0                            | 6.5                                   | 7.7                        | 5.8                  | 7.2   | 8.2                              | 3.4                                   |
| <b>1998</b>       |                                   |                                       |                            |                      |       |                                 |                                       |                            |                      |       |                                  |                                       |
| January           | 11.7                              | 47.9                                  | 59.5                       | 13.4                 | 73.0  | 26.2                            | 7.2                                   | 8.4                        | 5.9                  | 7.8   | 8.8                              | 3.7                                   |
| February          | 11.9                              | 47.5                                  | 59.5                       | 14.5                 | 74.0  | 27.9                            | 7.3                                   | 8.5                        | 5.9                  | 7.9   | 9.0                              | 3.7                                   |
| March             | 10.1                              | 45.0                                  | 55.2                       | 15.4                 | 70.6  | 25.2                            | 6.9                                   | 7.9                        | 6.3                  | 7.5   | 7.7                              | 3.5                                   |
| April             | 5.9                               | 43.4                                  | 49.4                       | 14.2                 | 63.5  | 17.9                            | 6.6                                   | 7.2                        | 5.6                  | 6.7   | 4.5                              | 3.4                                   |
| May               | 7.8                               | 43.4                                  | 51.2                       | 13.9                 | 65.1  | 22.6                            | 6.6                                   | 7.4                        | 5.5                  | 6.9   | 5.9                              | 3.4                                   |
| June              | 8.2                               | 46.4                                  | 54.6                       | 13.1                 | 67.7  | 22.7                            | 7.0                                   | 7.8                        | 5.2                  | 7.1   | 6.2                              | 3.6                                   |
| July              | 7.7                               | 44.0                                  | 51.8                       | 13.8                 | 65.6  | 22.2                            | 6.6                                   | 7.4                        | 5.5                  | 6.9   | 5.8                              | 3.4                                   |
| August            | 6.9                               | 43.5                                  | 50.4                       | 13.0                 | 63.4  | 20.0                            | 6.6                                   | 7.2                        | 5.2                  | 6.7   | 5.2                              | 3.3                                   |
| September         | 5.6                               | 47.7                                  | 53.3                       | 15.8                 | 69.1  | 17.2                            | 7.1                                   | 7.6                        | 6.0                  | 7.2   | 4.2                              | 3.7                                   |
| October           | 6.3                               | 44.4                                  | 50.6                       | 11.1                 | 61.7  | 19.7                            | 6.7                                   | 7.3                        | 4.3                  | 6.5   | 4.7                              | 3.4                                   |
| November          | 6.9                               | 44.3                                  | 51.1                       | 12.9                 | 64.0  | 21.1                            | 6.7                                   | 7.4                        | 5.0                  | 6.7   | 5.1                              | 3.4                                   |
| TASMANIA          |                                   |                                       |                            |                      |       |                                 |                                       |                            |                      |       |                                  |                                       |
| <b>1997</b>       |                                   |                                       |                            |                      |       |                                 |                                       |                            |                      |       |                                  |                                       |
| September         | 4.0                               | 16.4                                  | 20.4                       | 4.2                  | 24.6  | 42.5                            | 11.1                                  | 13.0                       | 7.0                  | 11.4  | 11.7                             | 4.9                                   |
| October           | 3.3                               | 17.1                                  | 20.4                       | 4.3                  | 24.7  | 36.0                            | 11.4                                  | 12.8                       | 7.4                  | 11.4  | 9.5                              | 5.1                                   |
| November          | 2.9                               | 16.3                                  | 19.2                       | 4.6                  | 23.8  | 32.1                            | 11.0                                  | 12.2                       | 7.6                  | 10.9  | 8.3                              | 4.9                                   |
| December          | 3.0                               | 18.7                                  | 21.7                       | 6.1                  | 27.9  | 30.5                            | 12.3                                  | 13.4                       | 10.0                 | 12.5  | 8.8                              | 5.6                                   |
| <b>1998</b>       |                                   |                                       |                            |                      |       |                                 |                                       |                            |                      |       |                                  |                                       |
| January           | 3.7                               | 16.5                                  | 20.2                       | 4.9                  | 25.1  | 34.7                            | 11.0                                  | 12.6                       | 8.5                  | 11.5  | 10.7                             | 4.9                                   |
| February          | 3.5                               | 17.2                                  | 20.7                       | 3.9                  | 24.6  | 35.1                            | 11.3                                  | 12.7                       | 6.7                  | 11.1  | 10.0                             | 5.1                                   |
| March             | 3.9                               | 16.1                                  | 20.1                       | 4.3                  | 24.4  | 40.3                            | 10.7                                  | 12.5                       | 7.0                  | 11.0  | 11.4                             | 4.8                                   |
| April             | 2.3                               | 15.4                                  | 17.7                       | 4.5                  | 22.2  | 25.8                            | 10.3                                  | 11.1                       | 7.1                  | 10.0  | 6.6                              | 4.6                                   |
| May               | 2.7                               | 15.4                                  | 18.1                       | 3.5                  | 21.6  | 28.1                            | 10.6                                  | 11.7                       | 5.2                  | 9.7   | 7.8                              | 4.6                                   |
| June              | 2.4                               | 16.6                                  | 19.0                       | 3.6                  | 22.7  | 27.1                            | 11.5                                  | 12.4                       | 5.8                  | 10.4  | 7.0                              | 5.0                                   |
| July              | 2.8                               | 16.1                                  | 18.9                       | 4.1                  | 23.1  | 29.3                            | 11.2                                  | 12.3                       | 6.5                  | 10.6  | 8.2                              | 4.8                                   |
| August            | 2.2                               | 17.6                                  | 19.8                       | 4.8                  | 24.6  | 25.3                            | 12.2                                  | 13.0                       | 7.5                  | 11.3  | 6.5                              | 5.3                                   |
| September         | 3.0                               | 15.7                                  | 18.7                       | 3.4                  | 22.1  | 34.9                            | 10.9                                  | 12.3                       | 5.2                  | 10.2  | 8.7                              | 4.7                                   |
| October           | 2.5                               | 16.5                                  | 19.0                       | 3.8                  | 22.7  | 27.7                            | 11.4                                  | 12.3                       | 5.9                  | 10.5  | 7.1                              | 4.9                                   |
| November          | 2.5                               | 14.6                                  | 17.1                       | 3.4                  | 20.6  | 29.2                            | 10.1                                  | 11.2                       | 5.6                  | 9.6   | 7.3                              | 4.4                                   |

UNEMPLOYED PERSONS—Northern Territory and Australian Capital Territory: **Original**

| Month                               | NUMBER OF UNEMPLOYED PERSONS..... |                                       |                            |                      |       | UNEMPLOYMENT RATE.....          |                                       |                            |                      |       | UNEMPLOYMENT TO POPULATION RATIO |                                       |
|-------------------------------------|-----------------------------------|---------------------------------------|----------------------------|----------------------|-------|---------------------------------|---------------------------------------|----------------------------|----------------------|-------|----------------------------------|---------------------------------------|
|                                     | Aged 15-19 looking for f/t work   | Aged 20 and over looking for f/t work | Total looking for f/t work | Looking for p/t work | Total | Aged 15-19 looking for f/t work | Aged 20 and over looking for f/t work | Total looking for f/t work | Looking for p/t work | Total | Aged 15-19 looking for f/t work  | Aged 20 and over looking for f/t work |
|                                     | '000                              | '000                                  | '000                       | '000                 | '000  | %                               | %                                     | %                          | %                    | %     | %                                | %                                     |
| <b>NORTHERN TERRITORY</b>           |                                   |                                       |                            |                      |       |                                 |                                       |                            |                      |       |                                  |                                       |
| <b>1997</b>                         |                                   |                                       |                            |                      |       |                                 |                                       |                            |                      |       |                                  |                                       |
| September                           | * 0.4                             | 3.4                                   | 3.8                        | * 0.9                | 4.7   | * 14.3                          | 4.9                                   | 5.3                        | * 5.0                | 5.3   | * 3.4                            | 2.9                                   |
| October                             | * 0.4                             | 1.5                                   | 1.8                        | * 0.9                | 2.7   | * 11.9                          | 2.1                                   | 2.5                        | * 4.7                | 3.0   | * 2.9                            | 1.3                                   |
| November                            | * 0.1                             | 3.2                                   | 3.2                        | * 0.3                | 3.5   | * 2.9                           | 4.4                                   | 4.3                        | * 1.6                | 3.8   | * 0.6                            | 2.7                                   |
| December                            | * 0.3                             | 2.8                                   | 3.1                        | * 1.1                | 4.3   | * 8.9                           | 3.9                                   | 4.2                        | * 6.3                | 4.6   | * 2.6                            | 2.4                                   |
| <b>1998</b>                         |                                   |                                       |                            |                      |       |                                 |                                       |                            |                      |       |                                  |                                       |
| January                             | * 0.6                             | 2.6                                   | 3.2                        | 1.3                  | 4.5   | * 12.3                          | 3.9                                   | 4.5                        | 7.2                  | 5.0   | * 4.2                            | 2.2                                   |
| February                            | * 0.6                             | 3.5                                   | 4.1                        | 1.8                  | 5.9   | * 17.2                          | 5.1                                   | 5.7                        | 10.8                 | 6.6   | * 4.3                            | 3.0                                   |
| March                               | * 0.6                             | 3.9                                   | 4.5                        | 1.5                  | 6.0   | * 16.6                          | 5.5                                   | 6.0                        | 8.8                  | 6.6   | * 4.3                            | 3.3                                   |
| April                               | * 0.2                             | 2.7                                   | 3.0                        | 1.5                  | 4.5   | * 7.7                           | 3.9                                   | 4.0                        | 8.9                  | 4.9   | * 1.7                            | 2.3                                   |
| May                                 | * 0.4                             | 2.7                                   | 3.1                        | * 1.2                | 4.3   | * 13.4                          | 3.8                                   | 4.2                        | * 6.5                | 4.7   | * 3.3                            | 2.2                                   |
| June                                | * 0.5                             | 2.7                                   | 3.2                        | * 0.5                | 3.6   | * 15.4                          | 3.8                                   | 4.4                        | * 2.6                | 4.0   | * 3.6                            | 2.2                                   |
| July                                | * 0.3                             | 3.4                                   | 3.7                        | * 0.8                | 4.5   | * 7.8                           | 4.7                                   | 4.8                        | * 4.8                | 4.8   | * 2.1                            | 2.9                                   |
| August                              | * 0.4                             | 2.5                                   | 2.9                        | * 0.4                | 3.3   | * 11.5                          | 3.5                                   | 3.9                        | * 2.3                | 3.6   | * 2.7                            | 2.1                                   |
| September                           | * 0.8                             | 3.1                                   | 3.9                        | * 0.7                | 4.6   | * 22.4                          | 4.1                                   | 4.9                        | * 3.5                | 4.7   | * 6.0                            | 2.6                                   |
| October                             | * 0.3                             | 1.7                                   | 2.0                        | * 0.9                | 2.9   | * 10.4                          | 2.4                                   | 2.7                        | * 3.8                | 3.0   | * 2.5                            | 1.4                                   |
| November                            | * 0.8                             | 2.7                                   | 3.5                        | * 0.9                | 4.5   | * 20.5                          | 3.8                                   | 4.6                        | * 4.4                | 4.6   | * 5.7                            | 2.3                                   |
| <b>AUSTRALIAN CAPITAL TERRITORY</b> |                                   |                                       |                            |                      |       |                                 |                                       |                            |                      |       |                                  |                                       |
| <b>1997</b>                         |                                   |                                       |                            |                      |       |                                 |                                       |                            |                      |       |                                  |                                       |
| September                           | 1.2                               | 7.7                                   | 8.8                        | 4.7                  | 13.6  | 36.7                            | 6.0                                   | 6.8                        | 11.3                 | 7.9   | 5.2                              | 3.6                                   |
| October                             | 1.2                               | 8.5                                   | 9.7                        | 3.4                  | 13.1  | 32.2                            | 6.8                                   | 7.5                        | 8.4                  | 7.7   | 5.3                              | 4.0                                   |
| November                            | 1.5                               | 7.5                                   | 9.1                        | 3.5                  | 12.5  | 37.4                            | 6.0                                   | 7.0                        | 8.9                  | 7.4   | 7.0                              | 3.5                                   |
| December                            | 1.9                               | 8.1                                   | 10.0                       | 3.5                  | 13.5  | 43.3                            | 6.5                                   | 7.7                        | 8.8                  | 8.0   | 8.5                              | 3.8                                   |
| <b>1998</b>                         |                                   |                                       |                            |                      |       |                                 |                                       |                            |                      |       |                                  |                                       |
| January                             | 2.4                               | 8.7                                   | 11.1                       | 3.1                  | 14.2  | 51.7                            | 7.1                                   | 8.7                        | 8.3                  | 8.6   | 10.7                             | 4.1                                   |
| February                            | 1.7                               | 9.0                                   | 10.8                       | 3.9                  | 14.7  | 33.0                            | 7.2                                   | 8.2                        | 9.6                  | 8.5   | 7.8                              | 4.2                                   |
| March                               | 1.1                               | 7.9                                   | 9.0                        | 4.6                  | 13.6  | 34.9                            | 6.3                                   | 7.0                        | 10.8                 | 7.9   | 4.9                              | 3.7                                   |
| April                               | 1.2                               | 7.2                                   | 8.4                        | 3.0                  | 11.5  | 41.7                            | 5.9                                   | 6.7                        | 7.1                  | 6.8   | 5.3                              | 3.4                                   |
| May                                 | 1.2                               | 6.5                                   | 7.7                        | 3.7                  | 11.3  | 38.7                            | 5.2                                   | 6.0                        | 8.7                  | 6.7   | 5.2                              | 3.0                                   |
| June                                | 1.3                               | 6.2                                   | 7.4                        | 2.6                  | 10.0  | 40.4                            | 5.0                                   | 5.9                        | 5.9                  | 5.9   | 5.7                              | 2.9                                   |
| July                                | 1.1                               | 8.1                                   | 9.2                        | 2.6                  | 11.8  | 32.3                            | 6.4                                   | 7.1                        | 6.1                  | 6.9   | 4.9                              | 3.8                                   |
| August                              | 1.1                               | 6.6                                   | 7.7                        | 3.0                  | 10.7  | 39.7                            | 5.5                                   | 6.3                        | 6.6                  | 6.3   | 4.9                              | 3.1                                   |
| September                           | 1.1                               | 7.0                                   | 8.2                        | 2.8                  | 11.0  | 35.2                            | 5.8                                   | 6.6                        | 6.5                  | 6.5   | 5.0                              | 3.3                                   |
| October                             | 1.2                               | 5.5                                   | 6.7                        | 3.5                  | 10.2  | 32.4                            | 4.7                                   | 5.5                        | 7.8                  | 6.1   | 5.2                              | 2.6                                   |
| November                            | 1.0                               | 6.0                                   | 7.0                        | 2.8                  | 9.8   | 34.6                            | 4.9                                   | 5.6                        | 6.6                  | 5.9   | 4.6                              | 2.8                                   |



## LABOUR FORCE STATUS (AGED 15 AND OVER)—New South Wales(a)

SEASONALLY ADJUSTED.....

TREND.....

| Month          | SEASONALLY ADJUSTED.....   |                        |                          |                         |                          | TREND.....                 |                        |                          |                         |                          | Civilian population aged 15 and over<br>'000 |
|----------------|----------------------------|------------------------|--------------------------|-------------------------|--------------------------|----------------------------|------------------------|--------------------------|-------------------------|--------------------------|--|
|                | Employed full time<br>'000 | Total employed<br>'000 | Total unemployed<br>'000 | Unemp-loyment rate<br>% | Partic-ipation rate<br>% | Employed full time<br>'000 | Total employed<br>'000 | Total unemployed<br>'000 | Unemp-loyment rate<br>% | Partic-ipation rate<br>% |  |
| <b>MALES</b>   |                            |                        |                          |                         |                          |                            |                        |                          |                         |                          |  |
| <b>1997</b>    |                            |                        |                          |                         |                          |                            |                        |                          |                         |                          |  |
| September      | 1 428.1                    | 1 603.8                | 143.2                    | 8.2                     | 71.9                     | 1 423.4                    | 1 598.6                | 143.9                    | 8.3                     | 71.7                     | 2 429.3                                      |
| October        | 1 430.7                    | 1 598.9                | 145.0                    | 8.3                     | 71.7                     | 1 428.3                    | 1 603.8                | 142.4                    | 8.2                     | 71.8                     | 2 432.3                                      |
| November       | 1 437.7                    | 1 614.8                | 143.6                    | 8.2                     | 72.2                     | 1 432.1                    | 1 609.3                | 140.1                    | 8.0                     | 71.8                     | 2 435.2                                      |
| December       | 1 435.0                    | 1 618.6                | 132.8                    | 7.6                     | 71.8                     | 1 434.4                    | 1 613.3                | 137.5                    | 7.9                     | 71.8                     | 2 438.1                                      |
| <b>1998</b>    |                            |                        |                          |                         |                          |                            |                        |                          |                         |                          |  |
| January        | 1 438.5                    | 1 627.1                | 129.8                    | 7.4                     | 72.0                     | 1 435.2                    | 1 615.1                | 135.2                    | 7.7                     | 71.7                     | 2 440.3                                      |
| February       | 1 425.9                    | 1 597.8                | 141.0                    | 8.1                     | 71.2                     | 1 435.8                    | 1 615.9                | 133.7                    | 7.6                     | 71.6                     | 2 442.4                                      |
| March          | 1 436.0                    | 1 616.6                | 135.0                    | 7.7                     | 71.7                     | 1 437.3                    | 1 616.6                | 133.1                    | 7.6                     | 71.6                     | 2 444.6                                      |
| April          | 1 444.6                    | 1 621.4                | 125.7                    | 7.2                     | 71.4                     | 1 439.9                    | 1 617.8                | 134.0                    | 7.6                     | 71.6                     | 2 447.3                                      |
| May            | 1 440.5                    | 1 616.7                | 135.3                    | 7.7                     | 71.5                     | 1 443.3                    | 1 619.9                | 135.3                    | 7.7                     | 71.6                     | 2 450.1                                      |
| June           | 1 449.2                    | 1 627.0                | 138.0                    | 7.8                     | 72.0                     | 1 446.8                    | 1 623.2                | 135.9                    | 7.7                     | 71.7                     | 2 452.9                                      |
| July           | 1 456.1                    | 1 637.4                | 136.6                    | 7.7                     | 72.2                     | 1 449.7                    | 1 626.7                | 135.4                    | 7.7                     | 71.8                     | 2 455.5                                      |
| August         | 1 439.2                    | 1 608.0                | 142.7                    | 8.2                     | 71.2                     | 1 451.6                    | 1 629.8                | 134.3                    | 7.6                     | 71.8                     | 2 458.1                                      |
| September      | 1 458.0                    | 1 636.7                | 131.1                    | 7.4                     | 71.8                     | 1 453.0                    | 1 632.9                | 132.4                    | 7.5                     | 71.7                     | 2 460.6                                      |
| October        | 1 462.1                    | 1 651.2                | 116.1                    | 6.6                     | 71.7                     | 1 454.1                    | 1 635.9                | 130.5                    | 7.4                     | 71.7                     | 2 464.4                                      |
| November       | 1 447.4                    | 1 631.3                | 135.6                    | 7.7                     | 71.6                     | 1 454.9                    | 1 638.5                | 128.4                    | 7.3                     | 71.6                     | 2 468.1                                      |
| <b>FEMALES</b> |                            |                        |                          |                         |                          |                            |                        |                          |                         |                          |  |
| <b>1997</b>    |                            |                        |                          |                         |                          |                            |                        |                          |                         |                          |  |
| September      | 719.8                      | 1 211.4                | 97.1                     | 7.4                     | 51.9                     | 719.0                      | 1 202.6                | 98.5                     | 7.6                     | 51.6                     | 2 519.4                                      |
| October        | 716.5                      | 1 188.8                | 99.1                     | 7.7                     | 51.1                     | 718.7                      | 1 205.8                | 97.4                     | 7.5                     | 51.7                     | 2 522.1                                      |
| November       | 722.4                      | 1 217.1                | 95.1                     | 7.2                     | 52.0                     | 718.2                      | 1 209.0                | 96.5                     | 7.4                     | 51.7                     | 2 524.7                                      |
| December       | 715.8                      | 1 218.0                | 95.2                     | 7.2                     | 52.0                     | 717.1                      | 1 211.3                | 95.8                     | 7.3                     | 51.7                     | 2 527.4                                      |
| <b>1998</b>    |                            |                        |                          |                         |                          |                            |                        |                          |                         |                          |  |
| January        | 720.2                      | 1 216.2                | 97.3                     | 7.4                     | 51.9                     | 715.3                      | 1 213.0                | 95.3                     | 7.3                     | 51.7                     | 2 529.3                                      |
| February       | 708.5                      | 1 207.6                | 93.5                     | 7.2                     | 51.4                     | 714.6                      | 1 215.3                | 95.2                     | 7.3                     | 51.8                     | 2 531.1                                      |
| March          | 717.7                      | 1 213.7                | 95.7                     | 7.3                     | 51.7                     | 715.9                      | 1 218.1                | 95.3                     | 7.3                     | 51.9                     | 2 533.0                                      |
| April          | 720.1                      | 1 229.0                | 94.8                     | 7.2                     | 52.2                     | 719.9                      | 1 222.1                | 95.5                     | 7.2                     | 52.0                     | 2 535.3                                      |
| May            | 713.2                      | 1 218.8                | 96.6                     | 7.3                     | 51.8                     | 726.7                      | 1 228.0                | 95.5                     | 7.2                     | 52.2                     | 2 537.7                                      |
| June           | 735.6                      | 1 237.6                | 96.3                     | 7.2                     | 52.5                     | 734.2                      | 1 234.8                | 95.3                     | 7.2                     | 52.4                     | 2 540.0                                      |
| July           | 758.7                      | 1 249.2                | 96.3                     | 7.2                     | 52.9                     | 740.1                      | 1 239.8                | 95.4                     | 7.1                     | 52.5                     | 2 542.3                                      |
| August         | 735.7                      | 1 231.2                | 92.4                     | 7.0                     | 52.0                     | 743.1                      | 1 242.3                | 95.8                     | 7.2                     | 52.6                     | 2 544.5                                      |
| September      | 751.0                      | 1 256.0                | 98.3                     | 7.3                     | 53.2                     | 743.7                      | 1 242.7                | 96.6                     | 7.2                     | 52.6                     | 2 546.8                                      |
| October        | 742.9                      | 1 248.5                | 92.6                     | 6.9                     | 52.6                     | 742.6                      | 1 241.5                | 97.8                     | 7.3                     | 52.5                     | 2 550.1                                      |
| November       | 726.7                      | 1 220.2                | 106.1                    | 8.0                     | 51.9                     | 740.5                      | 1 239.7                | 99.1                     | 7.4                     | 52.4                     | 2 553.4                                      |
| <b>PERSONS</b> |                            |                        |                          |                         |                          |                            |                        |                          |                         |                          |  |
| <b>1997</b>    |                            |                        |                          |                         |                          |                            |                        |                          |                         |                          |  |
| September      | 2 147.9                    | 2 815.2                | 240.2                    | 7.9                     | 61.7                     | 2 142.4                    | 2 801.2                | 242.4                    | 8.0                     | 61.5                     | 4 948.7                                      |
| October        | 2 147.2                    | 2 787.7                | 244.1                    | 8.1                     | 61.2                     | 2 147.1                    | 2 809.6                | 239.7                    | 7.9                     | 61.5                     | 4 954.3                                      |
| November       | 2 160.1                    | 2 831.9                | 238.7                    | 7.8                     | 61.9                     | 2 150.4                    | 2 818.3                | 236.6                    | 7.7                     | 61.6                     | 4 959.9                                      |
| December       | 2 150.7                    | 2 836.6                | 228.0                    | 7.4                     | 61.7                     | 2 151.4                    | 2 824.7                | 233.3                    | 7.6                     | 61.6                     | 4 965.6                                      |
| <b>1998</b>    |                            |                        |                          |                         |                          |                            |                        |                          |                         |                          |  |
| January        | 2 158.7                    | 2 843.3                | 227.1                    | 7.4                     | 61.8                     | 2 150.4                    | 2 828.2                | 230.5                    | 7.5                     | 61.5                     | 4 969.5                                      |
| February       | 2 134.4                    | 2 805.4                | 234.5                    | 7.7                     | 61.1                     | 2 150.4                    | 2 831.2                | 228.9                    | 7.5                     | 61.5                     | 4 973.5                                      |
| March          | 2 153.7                    | 2 830.3                | 230.7                    | 7.5                     | 61.5                     | 2 153.2                    | 2 834.6                | 228.4                    | 7.5                     | 61.5                     | 4 977.5                                      |
| April          | 2 164.8                    | 2 850.4                | 220.5                    | 7.2                     | 61.6                     | 2 159.8                    | 2 839.9                | 229.5                    | 7.5                     | 61.6                     | 4 982.7                                      |
| May            | 2 153.7                    | 2 835.4                | 231.9                    | 7.6                     | 61.5                     | 2 170.0                    | 2 847.9                | 230.7                    | 7.5                     | 61.7                     | 4 987.8                                      |
| June           | 2 184.8                    | 2 864.6                | 234.3                    | 7.6                     | 62.1                     | 2 181.0                    | 2 858.0                | 231.2                    | 7.5                     | 61.9                     | 4 992.9                                      |
| July           | 2 214.8                    | 2 886.7                | 232.9                    | 7.5                     | 62.4                     | 2 189.7                    | 2 866.6                | 230.8                    | 7.5                     | 62.0                     | 4 997.7                                      |
| August         | 2 175.0                    | 2 839.2                | 235.1                    | 7.6                     | 61.5                     | 2 194.7                    | 2 872.1                | 230.1                    | 7.4                     | 62.0                     | 5 002.6                                      |
| September      | 2 209.0                    | 2 892.6                | 229.4                    | 7.3                     | 62.3                     | 2 196.7                    | 2 875.6                | 229.1                    | 7.4                     | 62.0                     | 5 007.4                                      |
| October        | 2 205.0                    | 2 899.7                | 208.7                    | 6.7                     | 62.0                     | 2 196.6                    | 2 877.4                | 228.4                    | 7.4                     | 61.9                     | 5 014.5                                      |
| November       | 2 174.1                    | 2 851.5                | 241.7                    | 7.8                     | 61.6                     | 2 195.4                    | 2 878.2                | 227.5                    | 7.3                     | 61.8                     | 5 021.6                                      |

(a) Trend estimates for May 1998 to October 1998 have been revised.

## LABOUR FORCE STATUS (AGED 15 AND OVER)–Victoria(a)

SEASONALLY ADJUSTED.....

TREND.....

| Month          | SEASONALLY ADJUSTED.....   |                        |                          |                        |                         | TREND.....                 |                        |                          |                        |                         | Civilian population aged 15 and over<br>'000 |
|----------------|----------------------------|------------------------|--------------------------|------------------------|-------------------------|----------------------------|------------------------|--------------------------|------------------------|-------------------------|--|
|                | Employed full time<br>'000 | Total employed<br>'000 | Total unemployed<br>'000 | Unemployment rate<br>% | Participation rate<br>% | Employed full time<br>'000 | Total employed<br>'000 | Total unemployed<br>'000 | Unemployment rate<br>% | Participation rate<br>% |  |
| <b>MALES</b>   |                            |                        |                          |                        |                         |                            |                        |                          |                        |                         |  |
| <b>1997</b>    |                            |                        |                          |                        |                         |                            |                        |                          |                        |                         |  |
| September      | 1 034.8                    | 1 188.2                | 118.9                    | 9.1                    | 73.3                    | 1 038.6                    | 1 187.7                | 114.3                    | 8.8                    | 73.0                    | 1 784.5                                      |
| October        | 1 043.5                    | 1 195.6                | 105.0                    | 8.1                    | 72.8                    | 1 042.0                    | 1 190.9                | 111.9                    | 8.6                    | 72.9                    | 1 786.5                                      |
| November       | 1 048.5                    | 1 194.4                | 109.0                    | 8.4                    | 72.9                    | 1 046.7                    | 1 194.0                | 110.3                    | 8.5                    | 72.9                    | 1 788.4                                      |
| December       | 1 049.6                    | 1 200.6                | 110.5                    | 8.4                    | 73.2                    | 1 051.7                    | 1 197.2                | 109.7                    | 8.4                    | 73.0                    | 1 790.4                                      |
| <b>1998</b>    |                            |                        |                          |                        |                         |                            |                        |                          |                        |                         |  |
| January        | 1 056.5                    | 1 193.3                | 114.0                    | 8.7                    | 72.9                    | 1 056.0                    | 1 200.5                | 110.2                    | 8.4                    | 73.1                    | 1 792.2                                      |
| February       | 1 061.3                    | 1 203.5                | 105.5                    | 8.1                    | 73.0                    | 1 058.8                    | 1 204.2                | 111.0                    | 8.4                    | 73.3                    | 1 794.0                                      |
| March          | 1 061.3                    | 1 208.2                | 114.5                    | 8.7                    | 73.7                    | 1 059.6                    | 1 207.4                | 111.6                    | 8.5                    | 73.5                    | 1 795.8                                      |
| April          | 1 059.2                    | 1 213.2                | 112.8                    | 8.5                    | 73.7                    | 1 059.1                    | 1 210.6                | 111.6                    | 8.4                    | 73.5                    | 1 798.0                                      |
| May            | 1 060.5                    | 1 217.0                | 111.2                    | 8.4                    | 73.8                    | 1 058.3                    | 1 213.2                | 110.7                    | 8.4                    | 73.5                    | 1 800.1                                      |
| June           | 1 051.3                    | 1 213.4                | 107.7                    | 8.2                    | 73.3                    | 1 057.7                    | 1 215.0                | 109.3                    | 8.3                    | 73.5                    | 1 802.2                                      |
| July           | 1 055.8                    | 1 212.7                | 108.7                    | 8.2                    | 73.2                    | 1 057.8                    | 1 216.0                | 107.5                    | 8.1                    | 73.4                    | 1 804.1                                      |
| August         | 1 057.8                    | 1 211.0                | 106.0                    | 8.1                    | 72.9                    | 1 058.4                    | 1 216.7                | 105.6                    | 8.0                    | 73.2                    | 1 805.9                                      |
| September      | 1 067.3                    | 1 230.8                | 102.2                    | 7.7                    | 73.7                    | 1 058.9                    | 1 217.3                | 103.8                    | 7.9                    | 73.1                    | 1 807.7                                      |
| October        | 1 059.6                    | 1 213.7                | 102.3                    | 7.8                    | 72.7                    | 1 058.9                    | 1 217.7                | 102.4                    | 7.8                    | 72.9                    | 1 810.7                                      |
| November       | 1 052.6                    | 1 214.6                | 101.3                    | 7.7                    | 72.6                    | 1 058.6                    | 1 217.6                | 101.2                    | 7.7                    | 72.7                    | 1 813.6                                      |
| <b>FEMALES</b> |                            |                        |                          |                        |                         |                            |                        |                          |                        |                         |  |
| <b>1997</b>    |                            |                        |                          |                        |                         |                            |                        |                          |                        |                         |  |
| September      | 512.4                      | 917.9                  | 87.2                     | 8.7                    | 54.0                    | 509.8                      | 911.6                  | 88.4                     | 8.8                    | 53.7                    | 1 862.9                                      |
| October        | 512.1                      | 913.2                  | 87.9                     | 8.8                    | 53.7                    | 510.9                      | 914.9                  | 86.2                     | 8.6                    | 53.7                    | 1 864.8                                      |
| November       | 508.3                      | 921.0                  | 84.4                     | 8.4                    | 53.9                    | 513.2                      | 918.6                  | 84.4                     | 8.4                    | 53.7                    | 1 866.8                                      |
| December       | 519.6                      | 924.9                  | 79.1                     | 7.9                    | 53.7                    | 516.8                      | 922.1                  | 83.2                     | 8.3                    | 53.8                    | 1 868.7                                      |
| <b>1998</b>    |                            |                        |                          |                        |                         |                            |                        |                          |                        |                         |  |
| January        | 517.6                      | 923.5                  | 85.3                     | 8.5                    | 53.9                    | 521.1                      | 925.1                  | 82.5                     | 8.2                    | 53.9                    | 1 870.5                                      |
| February       | 527.7                      | 925.7                  | 79.3                     | 7.9                    | 53.7                    | 524.7                      | 927.1                  | 82.6                     | 8.2                    | 53.9                    | 1 872.2                                      |
| March          | 525.5                      | 926.4                  | 87.7                     | 8.6                    | 54.1                    | 527.3                      | 928.9                  | 83.4                     | 8.2                    | 54.0                    | 1 873.9                                      |
| April          | 537.7                      | 936.9                  | 84.4                     | 8.3                    | 54.4                    | 528.8                      | 931.2                  | 84.6                     | 8.3                    | 54.1                    | 1 876.2                                      |
| May            | 525.8                      | 932.2                  | 81.2                     | 8.0                    | 53.9                    | 529.4                      | 933.9                  | 86.0                     | 8.4                    | 54.3                    | 1 878.4                                      |
| June           | 526.2                      | 934.6                  | 88.4                     | 8.6                    | 54.4                    | 529.5                      | 936.6                  | 86.9                     | 8.5                    | 54.4                    | 1 880.7                                      |
| July           | 521.5                      | 930.7                  | 89.8                     | 8.8                    | 54.2                    | 529.3                      | 938.5                  | 87.1                     | 8.5                    | 54.5                    | 1 882.6                                      |
| August         | 542.3                      | 954.9                  | 87.1                     | 8.4                    | 55.3                    | 529.0                      | 939.5                  | 86.5                     | 8.4                    | 54.4                    | 1 884.5                                      |
| September      | 525.3                      | 938.1                  | 89.1                     | 8.7                    | 54.5                    | 528.5                      | 939.9                  | 85.5                     | 8.3                    | 54.4                    | 1 886.4                                      |
| October        | 529.4                      | 936.3                  | 78.6                     | 7.7                    | 53.7                    | 527.6                      | 939.5                  | 84.1                     | 8.2                    | 54.2                    | 1 889.1                                      |
| November       | 521.6                      | 935.6                  | 81.5                     | 8.0                    | 53.8                    | 527.1                      | 939.1                  | 82.7                     | 8.1                    | 54.0                    | 1 891.8                                      |
| <b>PERSONS</b> |                            |                        |                          |                        |                         |                            |                        |                          |                        |                         |  |
| <b>1997</b>    |                            |                        |                          |                        |                         |                            |                        |                          |                        |                         |  |
| September      | 1 547.1                    | 2 106.2                | 206.2                    | 8.9                    | 63.4                    | 1 548.4                    | 2 099.3                | 202.6                    | 8.8                    | 63.1                    | 3 647.4                                      |
| October        | 1 555.5                    | 2 108.7                | 192.8                    | 8.4                    | 63.0                    | 1 552.9                    | 2 105.7                | 198.2                    | 8.6                    | 63.1                    | 3 651.3                                      |
| November       | 1 556.8                    | 2 115.4                | 193.4                    | 8.4                    | 63.2                    | 1 559.9                    | 2 112.6                | 194.7                    | 8.4                    | 63.1                    | 3 655.2                                      |
| December       | 1 569.2                    | 2 125.5                | 189.6                    | 8.2                    | 63.3                    | 1 568.5                    | 2 119.2                | 192.9                    | 8.3                    | 63.2                    | 3 659.2                                      |
| <b>1998</b>    |                            |                        |                          |                        |                         |                            |                        |                          |                        |                         |  |
| January        | 1 574.1                    | 2 116.8                | 199.3                    | 8.6                    | 63.2                    | 1 577.2                    | 2 125.7                | 192.7                    | 8.3                    | 63.3                    | 3 662.7                                      |
| February       | 1 589.0                    | 2 129.2                | 184.8                    | 8.0                    | 63.1                    | 1 583.6                    | 2 131.3                | 193.6                    | 8.3                    | 63.4                    | 3 666.2                                      |
| March          | 1 586.8                    | 2 134.6                | 202.2                    | 8.7                    | 63.7                    | 1 586.9                    | 2 136.3                | 195.0                    | 8.4                    | 63.5                    | 3 669.7                                      |
| April          | 1 596.9                    | 2 150.1                | 197.2                    | 8.4                    | 63.9                    | 1 587.8                    | 2 141.8                | 196.2                    | 8.4                    | 63.6                    | 3 674.1                                      |
| May            | 1 586.3                    | 2 149.2                | 192.4                    | 8.2                    | 63.7                    | 1 587.7                    | 2 147.2                | 196.7                    | 8.4                    | 63.7                    | 3 678.5                                      |
| June           | 1 577.5                    | 2 148.0                | 196.1                    | 8.4                    | 63.6                    | 1 587.2                    | 2 151.6                | 196.2                    | 8.4                    | 63.7                    | 3 682.9                                      |
| July           | 1 577.2                    | 2 143.4                | 198.5                    | 8.5                    | 63.5                    | 1 587.1                    | 2 154.5                | 194.6                    | 8.3                    | 63.7                    | 3 686.7                                      |
| August         | 1 600.1                    | 2 165.9                | 193.2                    | 8.2                    | 63.9                    | 1 587.4                    | 2 156.3                | 192.1                    | 8.2                    | 63.6                    | 3 690.4                                      |
| September      | 1 592.5                    | 2 169.0                | 191.3                    | 8.1                    | 63.9                    | 1 587.4                    | 2 157.2                | 189.3                    | 8.1                    | 63.5                    | 3 694.1                                      |
| October        | 1 589.0                    | 2 150.0                | 180.9                    | 7.8                    | 63.0                    | 1 586.5                    | 2 157.2                | 186.5                    | 8.0                    | 63.3                    | 3 699.8                                      |
| November       | 1 574.2                    | 2 150.3                | 182.8                    | 7.8                    | 63.0                    | 1 585.7                    | 2 156.8                | 184.0                    | 7.9                    | 63.2                    | 3 705.5                                      |

(a) Trend estimates for May 1998 to October 1998 have been revised.

## LABOUR FORCE STATUS (AGED 15 AND OVER)–Queensland(a)

SEASONALLY ADJUSTED.....

TREND.....

| Month          | SEASONALLY ADJUSTED.....   |                        |                          |                        |                         | TREND.....                 |                        |                          |                        |                         | Civilian population aged 15 and over<br>'000 |
|----------------|----------------------------|------------------------|--------------------------|------------------------|-------------------------|----------------------------|------------------------|--------------------------|------------------------|-------------------------|--|
|                | Employed full time<br>'000 | Total employed<br>'000 | Total unemployed<br>'000 | Unemployment rate<br>% | Participation rate<br>% | Employed full time<br>'000 | Total employed<br>'000 | Total unemployed<br>'000 | Unemployment rate<br>% | Participation rate<br>% |  |
| <b>MALES</b>   |                            |                        |                          |                        |                         |                            |                        |                          |                        |                         |  |
| <b>1997</b>    |                            |                        |                          |                        |                         |                            |                        |                          |                        |                         |  |
| September      | 776.4                      | 886.6                  | 94.6                     | 9.6                    | 73.8                    | 779.6                      | 891.4                  | 94.5                     | 9.6                    | 74.1                    | 1 330.3                                      |
| October        | 782.9                      | 900.4                  | 92.8                     | 9.3                    | 74.5                    | 781.1                      | 894.9                  | 94.6                     | 9.6                    | 74.2                    | 1 332.8                                      |
| November       | 780.9                      | 895.4                  | 95.2                     | 9.6                    | 74.2                    | 783.6                      | 898.8                  | 94.1                     | 9.5                    | 74.4                    | 1 335.4                                      |
| December       | 783.2                      | 899.8                  | 94.6                     | 9.5                    | 74.3                    | 787.0                      | 902.8                  | 92.9                     | 9.3                    | 74.4                    | 1 338.0                                      |
| <b>1998</b>    |                            |                        |                          |                        |                         |                            |                        |                          |                        |                         |  |
| January        | 795.7                      | 910.8                  | 89.2                     | 8.9                    | 74.6                    | 790.5                      | 906.2                  | 91.1                     | 9.1                    | 74.4                    | 1 340.1                                      |
| February       | 792.4                      | 909.1                  | 93.2                     | 9.3                    | 74.7                    | 793.2                      | 908.4                  | 89.5                     | 9.0                    | 74.3                    | 1 342.3                                      |
| March          | 797.5                      | 911.3                  | 85.9                     | 8.6                    | 74.2                    | 794.4                      | 909.1                  | 88.4                     | 8.9                    | 74.2                    | 1 344.4                                      |
| April          | 797.9                      | 906.7                  | 85.8                     | 8.6                    | 73.7                    | 794.3                      | 908.4                  | 88.4                     | 8.9                    | 74.0                    | 1 346.6                                      |
| May            | 787.4                      | 908.0                  | 88.3                     | 8.9                    | 73.9                    | 793.5                      | 907.4                  | 89.7                     | 9.0                    | 73.9                    | 1 348.8                                      |
| June           | 792.8                      | 908.7                  | 90.1                     | 9.0                    | 73.9                    | 793.1                      | 907.2                  | 91.6                     | 9.2                    | 73.9                    | 1 351.1                                      |
| July           | 796.5                      | 904.3                  | 98.9                     | 9.9                    | 74.1                    | 794.5                      | 909.3                  | 93.0                     | 9.3                    | 74.1                    | 1 353.0                                      |
| August         | 794.4                      | 909.0                  | 91.9                     | 9.2                    | 73.9                    | 797.6                      | 913.2                  | 93.4                     | 9.3                    | 74.3                    | 1 354.9                                      |
| September      | 796.7                      | 917.3                  | 98.1                     | 9.7                    | 74.8                    | 801.7                      | 918.2                  | 92.7                     | 9.2                    | 74.5                    | 1 356.8                                      |
| October        | 810.1                      | 928.9                  | 88.6                     | 8.7                    | 74.9                    | 806.1                      | 923.5                  | 91.3                     | 9.0                    | 74.7                    | 1 359.3                                      |
| November       | 816.6                      | 933.2                  | 84.0                     | 8.3                    | 74.7                    | 810.6                      | 928.3                  | 89.5                     | 8.8                    | 74.7                    | 1 361.7                                      |
| <b>FEMALES</b> |                            |                        |                          |                        |                         |                            |                        |                          |                        |                         |  |
| <b>1997</b>    |                            |                        |                          |                        |                         |                            |                        |                          |                        |                         |  |
| September      | 379.0                      | 683.8                  | 68.4                     | 9.1                    | 55.5                    | 381.6                      | 685.0                  | 67.8                     | 9.0                    | 55.6                    | 1 355.1                                      |
| October        | 381.0                      | 691.7                  | 68.4                     | 9.0                    | 56.0                    | 384.4                      | 687.2                  | 67.6                     | 9.0                    | 55.6                    | 1 357.6                                      |
| November       | 386.2                      | 690.3                  | 67.5                     | 8.9                    | 55.7                    | 386.8                      | 689.1                  | 67.0                     | 8.9                    | 55.6                    | 1 360.1                                      |
| December       | 397.7                      | 688.0                  | 64.4                     | 8.6                    | 55.2                    | 388.8                      | 691.3                  | 66.0                     | 8.7                    | 55.6                    | 1 362.7                                      |
| <b>1998</b>    |                            |                        |                          |                        |                         |                            |                        |                          |                        |                         |  |
| January        | 384.9                      | 690.5                  | 64.9                     | 8.6                    | 55.4                    | 390.2                      | 694.0                  | 64.6                     | 8.5                    | 55.6                    | 1 364.7                                      |
| February       | 392.4                      | 702.0                  | 65.2                     | 8.5                    | 56.1                    | 391.2                      | 697.1                  | 63.6                     | 8.4                    | 55.7                    | 1 366.7                                      |
| March          | 385.4                      | 695.5                  | 60.4                     | 8.0                    | 55.2                    | 391.5                      | 700.4                  | 63.0                     | 8.3                    | 55.8                    | 1 368.7                                      |
| April          | 398.8                      | 705.8                  | 64.1                     | 8.3                    | 56.2                    | 391.1                      | 703.4                  | 62.6                     | 8.2                    | 55.9                    | 1 370.8                                      |
| May            | 390.2                      | 708.1                  | 59.3                     | 7.7                    | 55.9                    | 390.1                      | 705.2                  | 62.5                     | 8.1                    | 55.9                    | 1 373.0                                      |
| June           | 385.7                      | 706.4                  | 67.2                     | 8.7                    | 56.3                    | 388.8                      | 705.4                  | 62.8                     | 8.2                    | 55.9                    | 1 375.1                                      |
| July           | 390.5                      | 703.6                  | 62.9                     | 8.2                    | 55.7                    | 387.7                      | 704.8                  | 63.3                     | 8.2                    | 55.8                    | 1 377.0                                      |
| August         | 384.0                      | 707.1                  | 60.1                     | 7.8                    | 55.6                    | 387.1                      | 704.4                  | 63.8                     | 8.3                    | 55.7                    | 1 378.8                                      |
| September      | 386.9                      | 695.9                  | 64.7                     | 8.5                    | 55.1                    | 387.2                      | 704.3                  | 64.3                     | 8.4                    | 55.7                    | 1 380.7                                      |
| October        | 383.5                      | 706.1                  | 69.1                     | 8.9                    | 56.0                    | 387.9                      | 704.6                  | 64.7                     | 8.4                    | 55.6                    | 1 383.1                                      |
| November       | 397.2                      | 710.3                  | 62.4                     | 8.1                    | 55.8                    | 389.5                      | 705.3                  | 65.1                     | 8.4                    | 55.6                    | 1 385.6                                      |
| <b>PERSONS</b> |                            |                        |                          |                        |                         |                            |                        |                          |                        |                         |  |
| <b>1997</b>    |                            |                        |                          |                        |                         |                            |                        |                          |                        |                         |  |
| September      | 1 155.3                    | 1 570.4                | 163.0                    | 9.4                    | 64.6                    | 1 161.1                    | 1 576.4                | 162.3                    | 9.3                    | 64.7                    | 2 685.3                                      |
| October        | 1 163.9                    | 1 592.1                | 161.2                    | 9.2                    | 65.2                    | 1 165.5                    | 1 582.0                | 162.2                    | 9.3                    | 64.8                    | 2 690.4                                      |
| November       | 1 167.1                    | 1 585.6                | 162.8                    | 9.3                    | 64.9                    | 1 170.5                    | 1 588.0                | 161.1                    | 9.2                    | 64.9                    | 2 695.5                                      |
| December       | 1 180.9                    | 1 587.8                | 159.0                    | 9.1                    | 64.7                    | 1 175.8                    | 1 594.1                | 158.8                    | 9.1                    | 64.9                    | 2 700.6                                      |
| <b>1998</b>    |                            |                        |                          |                        |                         |                            |                        |                          |                        |                         |  |
| January        | 1 180.6                    | 1 601.3                | 154.2                    | 8.8                    | 64.9                    | 1 180.6                    | 1 600.2                | 155.7                    | 8.9                    | 64.9                    | 2 704.8                                      |
| February       | 1 184.8                    | 1 611.1                | 158.3                    | 8.9                    | 65.3                    | 1 184.4                    | 1 605.5                | 153.1                    | 8.7                    | 64.9                    | 2 709.0                                      |
| March          | 1 182.9                    | 1 606.9                | 146.4                    | 8.3                    | 64.6                    | 1 185.9                    | 1 609.5                | 151.3                    | 8.6                    | 64.9                    | 2 713.1                                      |
| April          | 1 196.7                    | 1 612.5                | 149.9                    | 8.5                    | 64.9                    | 1 185.4                    | 1 611.9                | 150.9                    | 8.6                    | 64.9                    | 2 717.5                                      |
| May            | 1 177.6                    | 1 616.1                | 147.6                    | 8.4                    | 64.8                    | 1 183.5                    | 1 612.5                | 152.2                    | 8.6                    | 64.8                    | 2 721.8                                      |
| June           | 1 178.5                    | 1 615.0                | 157.3                    | 8.9                    | 65.0                    | 1 182.0                    | 1 612.6                | 154.4                    | 8.7                    | 64.8                    | 2 726.2                                      |
| July           | 1 186.9                    | 1 607.9                | 161.8                    | 9.1                    | 64.8                    | 1 182.2                    | 1 614.1                | 156.3                    | 8.8                    | 64.9                    | 2 729.9                                      |
| August         | 1 178.4                    | 1 616.2                | 152.1                    | 8.6                    | 64.7                    | 1 184.7                    | 1 617.6                | 157.3                    | 8.9                    | 64.9                    | 2 733.7                                      |
| September      | 1 183.7                    | 1 613.2                | 162.8                    | 9.2                    | 64.9                    | 1 188.9                    | 1 622.5                | 157.0                    | 8.8                    | 65.0                    | 2 737.5                                      |
| October        | 1 193.5                    | 1 635.0                | 157.7                    | 8.8                    | 65.4                    | 1 194.0                    | 1 628.0                | 155.9                    | 8.7                    | 65.1                    | 2 742.4                                      |
| November       | 1 213.8                    | 1 643.5                | 146.5                    | 8.2                    | 65.2                    | 1 200.1                    | 1 633.6                | 154.5                    | 8.6                    | 65.1                    | 2 747.3                                      |

(a) Trend estimates for May 1998 to October 1998 have been revised.

## LABOUR FORCE STATUS (AGED 15 AND OVER)--South Australia(a)

SEASONALLY ADJUSTED.....

TREND.....

| Month          | SEASONALLY ADJUSTED.....   |                        |                          |                                |                                 | TREND.....                 |                        |                          |                                |                                 | Civilian population aged 15 and over<br>'000 |
|----------------|----------------------------|------------------------|--------------------------|--------------------------------|---------------------------------|----------------------------|------------------------|--------------------------|--------------------------------|---------------------------------|--|
|                | Employed full time<br>'000 | Total employed<br>'000 | Total unemployed<br>'000 | Unemp-<br>loyment<br>rate<br>% | Partic-<br>ipation<br>rate<br>% | Employed full time<br>'000 | Total employed<br>'000 | Total unemployed<br>'000 | Unemp-<br>loyment<br>rate<br>% | Partic-<br>ipation<br>rate<br>% |  |
| <b>MALES</b>   |                            |                        |                          |                                |                                 |                            |                        |                          |                                |                                 |  |
| <b>1997</b>    |                            |                        |                          |                                |                                 |                            |                        |                          |                                |                                 |  |
| September      | 324.8                      | 375.4                  | 43.8                     | 10.4                           | 71.9                            | 324.8                      | 374.7                  | 43.4                     | 10.4                           | 71.7                            | 582.7  |
| October        | 323.3                      | 374.0                  | 43.6                     | 10.4                           | 71.6                            | 324.7                      | 374.2                  | 43.4                     | 10.4                           | 71.6                            | 583.1  |
| November       | 323.6                      | 372.8                  | 43.8                     | 10.5                           | 71.4                            | 324.2                      | 373.1                  | 43.4                     | 10.4                           | 71.4                            | 583.6  |
| December       | 323.5                      | 371.9                  | 43.0                     | 10.4                           | 71.1                            | 323.4                      | 371.8                  | 43.2                     | 10.4                           | 71.1                            | 584.0  |
| <b>1998</b>    |                            |                        |                          |                                |                                 |                            |                        |                          |                                |                                 |  |
| January        | 325.9                      | 370.8                  | 42.3                     | 10.2                           | 70.7                            | 322.3                      | 370.4                  | 42.8                     | 10.4                           | 70.7                            | 584.3  |
| February       | 318.6                      | 369.4                  | 43.6                     | 10.6                           | 70.6                            | 320.9                      | 369.1                  | 42.2                     | 10.3                           | 70.4                            | 584.5  |
| March          | 319.5                      | 366.1                  | 42.0                     | 10.3                           | 69.8                            | 319.4                      | 367.9                  | 41.7                     | 10.2                           | 70.0                            | 584.8  |
| April          | 319.6                      | 369.6                  | 39.3                     | 9.6                            | 69.9                            | 318.4                      | 367.2                  | 41.6                     | 10.2                           | 69.9                            | 585.1  |
| May            | 315.4                      | 364.3                  | 42.9                     | 10.5                           | 69.6                            | 318.3                      | 367.0                  | 41.8                     | 10.2                           | 69.8                            | 585.4  |
| June           | 318.4                      | 368.7                  | 40.1                     | 9.8                            | 69.8                            | 319.2                      | 367.4                  | 42.3                     | 10.3                           | 70.0                            | 585.6  |
| July           | 321.2                      | 366.6                  | 45.2                     | 11.0                           | 70.3                            | 320.7                      | 368.2                  | 42.8                     | 10.4                           | 70.2                            | 585.9  |
| August         | 323.0                      | 369.8                  | 43.4                     | 10.5                           | 70.5                            | 322.2                      | 369.2                  | 43.2                     | 10.5                           | 70.4                            | 586.1  |
| September      | 326.4                      | 371.5                  | 44.2                     | 10.6                           | 70.9                            | 323.5                      | 370.1                  | 43.4                     | 10.5                           | 70.5                            | 586.4  |
| October        | 322.5                      | 370.7                  | 41.3                     | 10.0                           | 70.2                            | 324.4                      | 370.8                  | 43.6                     | 10.5                           | 70.6                            | 586.9  |
| November       | 324.4                      | 371.1                  | 44.3                     | 10.7                           | 70.7                            | 325.2                      | 371.6                  | 43.5                     | 10.5                           | 70.7                            | 587.3  |
| <b>FEMALES</b> |                            |                        |                          |                                |                                 |                            |                        |                          |                                |                                 |  |
| <b>1997</b>    |                            |                        |                          |                                |                                 |                            |                        |                          |                                |                                 |  |
| September      | 144.8                      | 288.1                  | 28.0                     | 8.9                            | 52.4                            | 146.2                      | 288.3                  | 27.8                     | 8.8                            | 52.4                            | 603.3  |
| October        | 145.2                      | 289.5                  | 27.3                     | 8.6                            | 52.5                            | 145.8                      | 288.1                  | 27.9                     | 8.8                            | 52.3                            | 603.7  |
| November       | 146.5                      | 288.8                  | 28.2                     | 8.9                            | 52.5                            | 146.1                      | 287.2                  | 28.0                     | 8.9                            | 52.2                            | 604.1  |
| December       | 148.2                      | 285.3                  | 27.6                     | 8.8                            | 51.8                            | 146.9                      | 285.8                  | 28.3                     | 9.0                            | 52.0                            | 604.5  |
| <b>1998</b>    |                            |                        |                          |                                |                                 |                            |                        |                          |                                |                                 |  |
| January        | 147.1                      | 283.2                  | 30.1                     | 9.6                            | 51.8                            | 147.6                      | 283.9                  | 28.7                     | 9.2                            | 51.7                            | 604.8  |
| February       | 146.2                      | 281.3                  | 28.1                     | 9.1                            | 51.1                            | 147.7                      | 281.4                  | 29.1                     | 9.4                            | 51.3                            | 605.1  |
| March          | 150.1                      | 278.3                  | 30.3                     | 9.8                            | 51.0                            | 147.1                      | 278.5                  | 29.4                     | 9.6                            | 50.9                            | 605.3  |
| April          | 147.9                      | 279.1                  | 28.2                     | 9.2                            | 50.7                            | 146.1                      | 275.8                  | 29.8                     | 9.7                            | 50.5                            | 605.6  |
| May            | 142.6                      | 273.8                  | 31.0                     | 10.2                           | 50.3                            | 145.3                      | 273.8                  | 30.0                     | 9.9                            | 50.1                            | 605.9  |
| June           | 142.8                      | 269.4                  | 30.6                     | 10.2                           | 49.5                            | 145.0                      | 273.4                  | 29.9                     | 9.9                            | 50.0                            | 606.2  |
| July           | 145.0                      | 271.6                  | 27.9                     | 9.3                            | 49.4                            | 145.2                      | 274.6                  | 29.5                     | 9.7                            | 50.1                            | 606.5  |
| August         | 146.4                      | 276.1                  | 31.3                     | 10.2                           | 50.6                            | 145.9                      | 277.0                  | 28.8                     | 9.4                            | 50.4                            | 606.8  |
| September      | 148.0                      | 282.3                  | 27.8                     | 9.0                            | 51.1                            | 146.6                      | 279.9                  | 28.0                     | 9.1                            | 50.7                            | 607.0  |
| October        | 148.6                      | 286.6                  | 25.0                     | 8.0                            | 51.3                            | 147.3                      | 282.7                  | 27.2                     | 8.8                            | 51.0                            | 607.6  |
| November       | 145.9                      | 284.5                  | 26.9                     | 8.6                            | 51.2                            | 147.9                      | 285.4                  | 26.4                     | 8.5                            | 51.3                            | 608.1  |
| <b>PERSONS</b> |                            |                        |                          |                                |                                 |                            |                        |                          |                                |                                 |  |
| <b>1997</b>    |                            |                        |                          |                                |                                 |                            |                        |                          |                                |                                 |  |
| September      | 469.5                      | 663.5                  | 71.8                     | 9.8                            | 62.0                            | 471.0                      | 663.0                  | 71.1                     | 9.7                            | 61.9                            | 1 186.0                                      |
| October        | 468.5                      | 663.5                  | 70.9                     | 9.6                            | 61.9                            | 470.5                      | 662.2                  | 71.3                     | 9.7                            | 61.8                            | 1 186.9                                      |
| November       | 470.2                      | 661.6                  | 72.0                     | 9.8                            | 61.8                            | 470.3                      | 660.4                  | 71.5                     | 9.8                            | 61.6                            | 1 187.7                                      |
| December       | 471.7                      | 657.3                  | 70.6                     | 9.7                            | 61.2                            | 470.3                      | 657.7                  | 71.6                     | 9.8                            | 61.4                            | 1 188.5                                      |
| <b>1998</b>    |                            |                        |                          |                                |                                 |                            |                        |                          |                                |                                 |  |
| January        | 473.0                      | 654.0                  | 72.4                     | 10.0                           | 61.1                            | 469.9                      | 654.4                  | 71.5                     | 9.8                            | 61.0                            | 1 189.1                                      |
| February       | 464.9                      | 650.7                  | 71.7                     | 9.9                            | 60.7                            | 468.6                      | 650.5                  | 71.3                     | 9.9                            | 60.7                            | 1 189.6                                      |
| March          | 469.6                      | 644.4                  | 72.3                     | 10.1                           | 60.2                            | 466.5                      | 646.5                  | 71.2                     | 9.9                            | 60.3                            | 1 190.1                                      |
| April          | 467.6                      | 648.7                  | 67.4                     | 9.4                            | 60.1                            | 464.5                      | 642.9                  | 71.4                     | 10.0                           | 60.0                            | 1 190.7                                      |
| May            | 458.0                      | 638.2                  | 73.9                     | 10.4                           | 59.8                            | 463.6                      | 640.8                  | 71.8                     | 10.1                           | 59.8                            | 1 191.3                                      |
| June           | 461.2                      | 638.1                  | 70.8                     | 10.0                           | 59.5                            | 464.2                      | 640.8                  | 72.1                     | 10.1                           | 59.8                            | 1 191.9                                      |
| July           | 466.2                      | 638.2                  | 73.1                     | 10.3                           | 59.7                            | 466.0                      | 642.8                  | 72.3                     | 10.1                           | 60.0                            | 1 192.4                                      |
| August         | 469.4                      | 645.8                  | 74.7                     | 10.4                           | 60.4                            | 468.1                      | 646.2                  | 72.0                     | 10.0                           | 60.2                            | 1 192.9                                      |
| September      | 474.4                      | 653.9                  | 72.0                     | 9.9                            | 60.8                            | 470.1                      | 650.0                  | 71.4                     | 9.9                            | 60.4                            | 1 193.4                                      |
| October        | 471.1                      | 657.3                  | 66.3                     | 9.2                            | 60.6                            | 471.7                      | 653.5                  | 70.8                     | 9.8                            | 60.6                            | 1 194.4                                      |
| November       | 470.3                      | 655.6                  | 71.1                     | 9.8                            | 60.8                            | 473.1                      | 657.0                  | 69.9                     | 9.6                            | 60.8                            | 1 195.4                                      |

(a) Trend estimates for May 1998 to October 1998 have been revised.

## LABOUR FORCE STATUS (AGED 15 AND OVER)–Western Australia(a)

SEASONALLY ADJUSTED.....

TREND.....

| Month          | SEASONALLY ADJUSTED.....   |                        |                          |                                |                                 | TREND.....                 |                        |                          |                                |                                 | Civilian population aged 15 and over<br>'000 |
|----------------|----------------------------|------------------------|--------------------------|--------------------------------|---------------------------------|----------------------------|------------------------|--------------------------|--------------------------------|---------------------------------|--|
|                | Employed full time<br>'000 | Total employed<br>'000 | Total unemployed<br>'000 | Unemp-<br>loyment<br>rate<br>% | Partic-<br>ipation<br>rate<br>% | Employed full time<br>'000 | Total employed<br>'000 | Total unemployed<br>'000 | Unemp-<br>loyment<br>rate<br>% | Partic-<br>ipation<br>rate<br>% |  |
| <b>MALES</b>   |                            |                        |                          |                                |                                 |                            |                        |                          |                                |                                 |  |
| <b>1997</b>    |                            |                        |                          |                                |                                 |                            |                        |                          |                                |                                 |  |
| September      | 442.2                      | 497.1                  | 39.9                     | 7.4                            | 76.6                            | 441.3                      | 497.8                  | 38.1                     | 7.1                            | 76.4                            | 701.1  |
| October        | 439.9                      | 498.7                  | 33.6                     | 6.3                            | 75.8                            | 442.5                      | 499.5                  | 37.8                     | 7.0                            | 76.5                            | 702.4  |
| November       | 443.7                      | 501.7                  | 38.2                     | 7.1                            | 76.7                            | 443.5                      | 500.7                  | 37.4                     | 7.0                            | 76.5                            | 703.8  |
| December       | 445.5                      | 502.7                  | 38.7                     | 7.1                            | 76.8                            | 444.0                      | 501.5                  | 37.1                     | 6.9                            | 76.4                            | 705.1  |
| <b>1998</b>    |                            |                        |                          |                                |                                 |                            |                        |                          |                                |                                 |  |
| January        | 447.0                      | 503.0                  | 37.2                     | 6.9                            | 76.5                            | 444.2                      | 501.9                  | 36.8                     | 6.8                            | 76.3                            | 706.1  |
| February       | 441.0                      | 500.2                  | 36.3                     | 6.8                            | 75.9                            | 443.9                      | 502.0                  | 36.9                     | 6.8                            | 76.2                            | 707.1  |
| March          | 443.0                      | 499.9                  | 37.9                     | 7.0                            | 75.9                            | 443.5                      | 501.8                  | 37.4                     | 6.9                            | 76.1                            | 708.1  |
| April          | 443.1                      | 502.2                  | 36.0                     | 6.7                            | 75.9                            | 443.0                      | 501.2                  | 38.4                     | 7.1                            | 76.1                            | 709.1  |
| May            | 443.4                      | 504.3                  | 37.7                     | 7.0                            | 76.3                            | 442.7                      | 500.8                  | 39.7                     | 7.3                            | 76.1                            | 710.1  |
| June           | 442.6                      | 500.7                  | 45.0                     | 8.2                            | 76.7                            | 442.8                      | 500.7                  | 41.0                     | 7.6                            | 76.2                            | 711.1  |
| July           | 442.0                      | 496.5                  | 43.3                     | 8.0                            | 75.8                            | 443.1                      | 501.1                  | 41.9                     | 7.7                            | 76.2                            | 712.3  |
| August         | 443.8                      | 499.8                  | 41.7                     | 7.7                            | 75.9                            | 443.2                      | 501.7                  | 42.3                     | 7.8                            | 76.3                            | 713.4  |
| September      | 443.6                      | 506.0                  | 41.2                     | 7.5                            | 76.6                            | 443.2                      | 502.6                  | 42.4                     | 7.8                            | 76.3                            | 714.6  |
| October        | 443.7                      | 505.4                  | 42.4                     | 7.7                            | 76.5                            | 443.3                      | 503.6                  | 42.3                     | 7.7                            | 76.2                            | 716.2  |
| November       | 442.6                      | 503.8                  | 41.5                     | 7.6                            | 76.0                            | 443.3                      | 504.5                  | 42.0                     | 7.7                            | 76.1                            | 717.7  |
| <b>FEMALES</b> |                            |                        |                          |                                |                                 |                            |                        |                          |                                |                                 |  |
| <b>1997</b>    |                            |                        |                          |                                |                                 |                            |                        |                          |                                |                                 |  |
| September      | 199.4                      | 374.3                  | 25.4                     | 6.3                            | 56.4                            | 197.0                      | 366.5                  | 26.7                     | 6.8                            | 55.5                            | 708.0  |
| October        | 196.6                      | 367.1                  | 26.6                     | 6.7                            | 55.5                            | 197.9                      | 367.3                  | 27.0                     | 6.9                            | 55.6                            | 709.3  |
| November       | 197.7                      | 365.7                  | 26.7                     | 6.8                            | 55.2                            | 198.4                      | 367.4                  | 27.5                     | 7.0                            | 55.6                            | 710.6  |
| December       | 197.6                      | 364.5                  | 29.1                     | 7.4                            | 55.3                            | 198.5                      | 367.3                  | 28.1                     | 7.1                            | 55.5                            | 711.8  |
| <b>1998</b>    |                            |                        |                          |                                |                                 |                            |                        |                          |                                |                                 |  |
| January        | 201.8                      | 367.5                  | 29.2                     | 7.4                            | 55.7                            | 198.6                      | 367.7                  | 28.6                     | 7.2                            | 55.6                            | 712.8  |
| February       | 195.4                      | 372.1                  | 28.9                     | 7.2                            | 56.2                            | 198.8                      | 369.4                  | 28.8                     | 7.2                            | 55.8                            | 713.7  |
| March          | 202.7                      | 371.0                  | 28.0                     | 7.0                            | 55.8                            | 199.4                      | 372.4                  | 28.6                     | 7.1                            | 56.1                            | 714.7  |
| April          | 196.6                      | 373.7                  | 28.8                     | 7.2                            | 56.3                            | 200.3                      | 376.2                  | 28.0                     | 6.9                            | 56.5                            | 715.5  |
| May            | 199.8                      | 379.3                  | 28.0                     | 6.9                            | 56.9                            | 201.4                      | 380.0                  | 27.4                     | 6.7                            | 56.9                            | 716.4  |
| June           | 205.6                      | 386.0                  | 24.7                     | 6.0                            | 57.3                            | 202.3                      | 383.2                  | 26.8                     | 6.5                            | 57.2                            | 717.3  |
| July           | 202.6                      | 389.1                  | 27.3                     | 6.6                            | 58.0                            | 202.7                      | 385.4                  | 26.4                     | 6.4                            | 57.3                            | 718.3  |
| August         | 206.7                      | 384.9                  | 24.9                     | 6.1                            | 57.0                            | 202.7                      | 386.6                  | 26.2                     | 6.3                            | 57.4                            | 719.3  |
| September      | 198.0                      | 386.7                  | 28.0                     | 6.7                            | 57.6                            | 202.3                      | 387.1                  | 26.0                     | 6.3                            | 57.4                            | 720.3  |
| October        | 201.0                      | 387.6                  | 24.7                     | 6.0                            | 57.1                            | 202.0                      | 387.1                  | 25.9                     | 6.3                            | 57.2                            | 721.8  |
| November       | 202.3                      | 384.8                  | 26.2                     | 6.4                            | 56.8                            | 201.4                      | 386.7                  | 25.9                     | 6.3                            | 57.1                            | 723.2  |
| <b>PERSONS</b> |                            |                        |                          |                                |                                 |                            |                        |                          |                                |                                 |  |
| <b>1997</b>    |                            |                        |                          |                                |                                 |                            |                        |                          |                                |                                 |  |
| September      | 641.6                      | 871.4                  | 65.3                     | 7.0                            | 66.5                            | 638.3                      | 864.4                  | 64.8                     | 7.0                            | 65.9                            | 1 409.1                                      |
| October        | 636.5                      | 865.8                  | 60.2                     | 6.5                            | 65.6                            | 640.4                      | 866.8                  | 64.8                     | 7.0                            | 66.0                            | 1 411.7                                      |
| November       | 641.4                      | 867.4                  | 64.9                     | 7.0                            | 65.9                            | 641.9                      | 868.1                  | 65.0                     | 7.0                            | 66.0                            | 1 414.3                                      |
| December       | 643.1                      | 867.2                  | 67.8                     | 7.2                            | 66.0                            | 642.5                      | 868.8                  | 65.2                     | 7.0                            | 65.9                            | 1 416.9                                      |
| <b>1998</b>    |                            |                        |                          |                                |                                 |                            |                        |                          |                                |                                 |  |
| January        | 648.8                      | 870.5                  | 66.4                     | 7.1                            | 66.0                            | 642.7                      | 869.7                  | 65.4                     | 7.0                            | 65.9                            | 1 418.9                                      |
| February       | 636.4                      | 872.3                  | 65.2                     | 7.0                            | 66.0                            | 642.7                      | 871.5                  | 65.7                     | 7.0                            | 66.0                            | 1 420.8                                      |
| March          | 645.7                      | 870.8                  | 65.9                     | 7.0                            | 65.8                            | 642.8                      | 874.2                  | 66.0                     | 7.0                            | 66.1                            | 1 422.8                                      |
| April          | 639.8                      | 875.9                  | 64.8                     | 6.9                            | 66.0                            | 643.3                      | 877.4                  | 66.4                     | 7.0                            | 66.3                            | 1 424.7                                      |
| May            | 643.2                      | 883.7                  | 65.8                     | 6.9                            | 66.6                            | 644.1                      | 880.8                  | 67.0                     | 7.1                            | 66.4                            | 1 426.5                                      |
| June           | 648.2                      | 886.7                  | 69.6                     | 7.3                            | 66.9                            | 645.1                      | 883.9                  | 67.8                     | 7.1                            | 66.6                            | 1 428.4                                      |
| July           | 644.6                      | 885.5                  | 70.6                     | 7.4                            | 66.8                            | 645.8                      | 886.4                  | 68.3                     | 7.2                            | 66.7                            | 1 430.6                                      |
| August         | 650.5                      | 884.8                  | 66.6                     | 7.0                            | 66.4                            | 645.8                      | 888.3                  | 68.5                     | 7.2                            | 66.8                            | 1 432.7                                      |
| September      | 641.6                      | 892.7                  | 69.1                     | 7.2                            | 67.0                            | 645.6                      | 889.7                  | 68.4                     | 7.1                            | 66.8                            | 1 434.9                                      |
| October        | 644.7                      | 893.1                  | 67.2                     | 7.0                            | 66.8                            | 645.3                      | 890.8                  | 68.2                     | 7.1                            | 66.7                            | 1 437.9                                      |
| November       | 644.9                      | 888.6                  | 67.8                     | 7.1                            | 66.4                            | 644.7                      | 891.3                  | 67.9                     | 7.1                            | 66.6                            | 1 441.0                                      |

(a) Trend estimates for May 1998 to October 1998 have been revised.

## LABOUR FORCE STATUS (AGED 15 AND OVER)–Tasmania(a)

SEASONALLY ADJUSTED.....

TREND.....

| Month       | SEASONALLY ADJUSTED.....   |                        |                          |                        |                         | TREND.....                 |                        |                          |                        |                         | Civilian population aged 15 and over<br>'000 |
|-------------|----------------------------|------------------------|--------------------------|------------------------|-------------------------|----------------------------|------------------------|--------------------------|------------------------|-------------------------|--|
|             | Employed full time<br>'000 | Total employed<br>'000 | Total unemployed<br>'000 | Unemployment rate<br>% | Participation rate<br>% | Employed full time<br>'000 | Total employed<br>'000 | Total unemployed<br>'000 | Unemployment rate<br>% | Participation rate<br>% |  |
| MALES       |                            |                        |                          |                        |                         |                            |                        |                          |                        |                         |  |
| <b>1997</b> |                            |                        |                          |                        |                         |                            |                        |                          |                        |                         |  |
| September   | 97.8                       | 112.7                  | 13.5                     | 10.7                   | 69.4                    | 97.5                       | 112.0                  | 14.8                     | 11.7                   | 69.7                    | 181.8  |
| October     | 99.3                       | 112.4                  | 15.6                     | 12.2                   | 70.4                    | 97.5                       | 111.9                  | 15.2                     | 12.0                   | 69.9                    | 181.8  |
| November    | 96.6                       | 111.9                  | 15.6                     | 12.3                   | 70.2                    | 97.2                       | 111.7                  | 15.5                     | 12.2                   | 70.0                    | 181.8  |
| December    | 96.2                       | 109.9                  | 16.9                     | 13.3                   | 69.7                    | 96.9                       | 111.6                  | 15.7                     | 12.3                   | 70.0                    | 181.8  |
| <b>1998</b> |                            |                        |                          |                        |                         |                            |                        |                          |                        |                         |  |
| January     | 96.6                       | 112.2                  | 15.2                     | 11.9                   | 70.1                    | 96.6                       | 111.7                  | 15.7                     | 12.3                   | 70.1                    | 181.7  |
| February    | 95.4                       | 112.0                  | 14.7                     | 11.6                   | 69.8                    | 96.5                       | 112.0                  | 15.5                     | 12.1                   | 70.2                    | 181.6  |
| March       | 96.4                       | 111.2                  | 16.1                     | 12.6                   | 70.1                    | 96.4                       | 112.1                  | 15.2                     | 11.9                   | 70.1                    | 181.5  |
| April       | 98.2                       | 113.5                  | 14.8                     | 11.6                   | 70.7                    | 96.2                       | 112.0                  | 15.1                     | 11.9                   | 70.0                    | 181.4  |
| May         | 96.0                       | 112.8                  | 14.4                     | 11.3                   | 70.2                    | 95.7                       | 111.4                  | 15.2                     | 12.0                   | 69.8                    | 181.3  |
| June        | 94.3                       | 110.3                  | 14.7                     | 11.7                   | 69.0                    | 95.0                       | 110.7                  | 15.4                     | 12.2                   | 69.5                    | 181.3  |
| July        | 93.7                       | 107.8                  | 16.4                     | 13.2                   | 68.5                    | 94.4                       | 110.0                  | 15.4                     | 12.3                   | 69.2                    | 181.2  |
| August      | 94.0                       | 109.8                  | 16.5                     | 13.0                   | 69.7                    | 94.1                       | 109.6                  | 15.3                     | 12.3                   | 68.9                    | 181.2  |
| September   | 93.2                       | 109.2                  | 14.5                     | 11.7                   | 68.3                    | 94.1                       | 109.5                  | 15.1                     | 12.1                   | 68.7                    | 181.2  |
| October     | 94.8                       | 110.2                  | 15.0                     | 12.0                   | 69.0                    | 94.2                       | 109.5                  | 14.7                     | 11.9                   | 68.6                    | 181.2  |
| November    | 95.8                       | 110.4                  | 13.1                     | 10.6                   | 68.1                    | 94.6                       | 109.7                  | 14.3                     | 11.6                   | 68.4                    | 181.2  |
| FEMALES     |                            |                        |                          |                        |                         |                            |                        |                          |                        |                         |  |
| <b>1997</b> |                            |                        |                          |                        |                         |                            |                        |                          |                        |                         |  |
| September   | 39.1                       | 78.5                   | 11.4                     | 12.7                   | 47.8                    | 39.5                       | 80.4                   | 9.9                      | 10.9                   | 48.0                    | 188.0  |
| October     | 40.7                       | 80.9                   | 9.5                      | 10.5                   | 48.1                    | 40.3                       | 80.9                   | 9.6                      | 10.6                   | 48.1                    | 188.0  |
| November    | 42.0                       | 82.5                   | 8.8                      | 9.6                    | 48.6                    | 41.3                       | 81.6                   | 9.2                      | 10.1                   | 48.3                    | 188.0  |
| December    | 41.8                       | 82.5                   | 8.6                      | 9.4                    | 48.4                    | 42.2                       | 82.4                   | 8.7                      | 9.6                    | 48.5                    | 188.0  |
| <b>1998</b> |                            |                        |                          |                        |                         |                            |                        |                          |                        |                         |  |
| January     | 42.9                       | 82.3                   | 8.2                      | 9.1                    | 48.2                    | 42.8                       | 83.3                   | 8.4                      | 9.1                    | 48.8                    | 187.9  |
| February    | 42.8                       | 84.8                   | 7.9                      | 8.5                    | 49.4                    | 43.0                       | 84.1                   | 8.2                      | 8.9                    | 49.2                    | 187.8  |
| March       | 43.9                       | 84.8                   | 8.4                      | 9.0                    | 49.7                    | 42.9                       | 84.7                   | 8.2                      | 8.8                    | 49.5                    | 187.7  |
| April       | 42.9                       | 85.3                   | 8.4                      | 8.9                    | 50.0                    | 42.5                       | 85.2                   | 8.3                      | 8.9                    | 49.8                    | 187.6  |
| May         | 40.9                       | 85.4                   | 8.5                      | 9.0                    | 50.1                    | 42.1                       | 85.5                   | 8.3                      | 8.9                    | 50.1                    | 187.5  |
| June        | 41.1                       | 85.4                   | 8.8                      | 9.3                    | 50.3                    | 41.7                       | 85.7                   | 8.3                      | 8.9                    | 50.2                    | 187.4  |
| July        | 42.2                       | 86.1                   | 7.2                      | 7.7                    | 49.8                    | 41.4                       | 85.7                   | 8.3                      | 8.8                    | 50.1                    | 187.4  |
| August      | 41.1                       | 85.5                   | 9.1                      | 9.6                    | 50.5                    | 41.3                       | 85.5                   | 8.2                      | 8.7                    | 50.0                    | 187.4  |
| September   | 41.2                       | 85.5                   | 7.8                      | 8.3                    | 49.8                    | 41.2                       | 85.4                   | 8.1                      | 8.7                    | 49.9                    | 187.3  |
| October     | 41.3                       | 85.4                   | 8.2                      | 8.7                    | 49.9                    | 41.2                       | 85.2                   | 8.1                      | 8.7                    | 49.8                    | 187.4  |
| November    | 41.1                       | 84.2                   | 8.0                      | 8.6                    | 49.2                    | 41.2                       | 84.9                   | 8.0                      | 8.6                    | 49.6                    | 187.5  |
| PERSONS     |                            |                        |                          |                        |                         |                            |                        |                          |                        |                         |  |
| <b>1997</b> |                            |                        |                          |                        |                         |                            |                        |                          |                        |                         |  |
| September   | 136.9                      | 191.2                  | 24.9                     | 11.5                   | 58.4                    | 137.1                      | 192.4                  | 24.7                     | 11.4                   | 58.7                    | 369.8  |
| October     | 140.1                      | 193.3                  | 25.1                     | 11.5                   | 59.1                    | 137.8                      | 192.8                  | 24.8                     | 11.4                   | 58.8                    | 369.8  |
| November    | 138.6                      | 194.4                  | 24.4                     | 11.2                   | 59.2                    | 138.5                      | 193.3                  | 24.7                     | 11.3                   | 59.0                    | 369.8  |
| December    | 138.0                      | 192.3                  | 25.5                     | 11.7                   | 58.9                    | 139.1                      | 194.0                  | 24.4                     | 11.2                   | 59.1                    | 369.8  |
| <b>1998</b> |                            |                        |                          |                        |                         |                            |                        |                          |                        |                         |  |
| January     | 139.6                      | 194.5                  | 23.4                     | 10.8                   | 59.0                    | 139.4                      | 195.0                  | 24.1                     | 11.0                   | 59.3                    | 369.6  |
| February    | 138.3                      | 196.9                  | 22.6                     | 10.3                   | 59.4                    | 139.5                      | 196.1                  | 23.7                     | 10.8                   | 59.5                    | 369.4  |
| March       | 140.2                      | 196.0                  | 24.5                     | 11.1                   | 59.7                    | 139.3                      | 196.9                  | 23.4                     | 10.6                   | 59.7                    | 369.2  |
| April       | 141.1                      | 198.8                  | 23.2                     | 10.5                   | 60.2                    | 138.7                      | 197.2                  | 23.4                     | 10.6                   | 59.8                    | 369.0  |
| May         | 136.8                      | 198.2                  | 22.9                     | 10.4                   | 60.0                    | 137.7                      | 197.0                  | 23.5                     | 10.7                   | 59.8                    | 368.8  |
| June        | 135.3                      | 195.7                  | 23.5                     | 10.7                   | 59.5                    | 136.6                      | 196.4                  | 23.7                     | 10.8                   | 59.7                    | 368.6  |
| July        | 135.8                      | 193.8                  | 23.6                     | 10.8                   | 59.0                    | 135.8                      | 195.6                  | 23.7                     | 10.8                   | 59.5                    | 368.6  |
| August      | 135.2                      | 195.3                  | 25.5                     | 11.6                   | 59.9                    | 135.4                      | 195.1                  | 23.5                     | 10.8                   | 59.3                    | 368.6  |
| September   | 134.3                      | 194.7                  | 22.3                     | 10.3                   | 58.9                    | 135.3                      | 194.8                  | 23.2                     | 10.6                   | 59.2                    | 368.5  |
| October     | 136.1                      | 195.5                  | 23.1                     | 10.6                   | 59.3                    | 135.4                      | 194.7                  | 22.8                     | 10.5                   | 59.0                    | 368.6  |
| November    | 136.8                      | 194.6                  | 21.1                     | 9.8                    | 58.5                    | 135.8                      | 194.6                  | 22.4                     | 10.3                   | 58.9                    | 368.7  |

(a) Trend estimates for May 1998 to October 1998 have been revised.

## LABOUR FORCE STATUS (AGED 15 AND OVER)–Northern Territory(a)

TREND.....

| Month       | Employed<br>full time<br>'000 | Total<br>employed<br>'000 | Total<br>unemployed<br>'000 | Unemp-<br>loyment<br>rate<br>% | Partic-<br>ipation<br>rate<br>% | Civilian<br>population<br>aged 15<br>and over<br>'000 |
|-------------|-------------------------------|---------------------------|-----------------------------|--------------------------------|---------------------------------|---|
| MALES       |                               |                           |                             |                                |                                 |   |
| <b>1997</b> |                               |                           |                             |                                |                                 |   |
| September   | 40.7                          | 46.6                      | 2.4                         | 5.0                            | 75.5                            | 65.0  |
| October     | 41.7                          | 47.1                      | 2.2                         | 4.5                            | 75.6                            | 65.2  |
| November    | 42.6                          | 47.6                      | 2.1                         | 4.3                            | 76.0                            | 65.4  |
| December    | 43.4                          | 48.1                      | 2.2                         | 4.4                            | 76.7                            | 65.6  |
| <b>1998</b> |                               |                           |                             |                                |                                 |   |
| January     | 43.8                          | 48.4                      | 2.4                         | 4.8                            | 77.1                            | 65.9  |
| February    | 43.8                          | 48.4                      | 2.7                         | 5.4                            | 77.2                            | 66.1  |
| March       | 43.5                          | 48.2                      | 3.0                         | 5.9                            | 77.1                            | 66.4  |
| April       | 43.3                          | 48.0                      | 3.2                         | 6.3                            | 76.8                            | 66.8  |
| May         | 43.3                          | 48.2                      | 3.3                         | 6.4                            | 76.7                            | 67.1  |
| June        | 43.4                          | 48.6                      | 3.2                         | 6.1                            | 76.8                            | 67.4  |
| July        | 43.6                          | 49.2                      | 3.0                         | 5.7                            | 77.1                            | 67.7  |
| August      | 43.9                          | 49.8                      | 2.8                         | 5.4                            | 77.4                            | 67.9  |
| September   | 44.1                          | 50.3                      | 2.7                         | 5.1                            | 77.7                            | 68.2  |
| October     | 44.2                          | 50.7                      | 2.6                         | 4.8                            | 78.0                            | 68.3  |
| November    | 44.3                          | 51.0                      | 2.4                         | 4.6                            | 78.2                            | 68.4  |
| FEMALES     |                               |                           |                             |                                |                                 |   |
| <b>1997</b> |                               |                           |                             |                                |                                 |   |
| September   | 26.4                          | 39.0                      | 1.7                         | 4.1                            | 63.6                            | 64.1  |
| October     | 27.1                          | 39.2                      | 1.7                         | 4.1                            | 63.7                            | 64.2  |
| November    | 27.5                          | 39.4                      | 1.7                         | 4.2                            | 63.8                            | 64.4  |
| December    | 27.4                          | 39.3                      | 1.9                         | 4.5                            | 63.9                            | 64.5  |
| <b>1998</b> |                               |                           |                             |                                |                                 |   |
| January     | 27.0                          | 39.2                      | 2.0                         | 4.8                            | 63.7                            | 64.6  |
| February    | 26.7                          | 39.0                      | 2.0                         | 4.8                            | 63.3                            | 64.7  |
| March       | 26.5                          | 38.8                      | 1.9                         | 4.6                            | 62.8                            | 64.8  |
| April       | 26.7                          | 38.9                      | 1.7                         | 4.2                            | 62.4                            | 64.9  |
| May         | 27.1                          | 39.1                      | 1.5                         | 3.6                            | 62.3                            | 65.1  |
| June        | 27.4                          | 39.4                      | 1.3                         | 3.1                            | 62.4                            | 65.2  |
| July        | 27.7                          | 39.8                      | 1.2                         | 2.9                            | 62.8                            | 65.3  |
| August      | 28.1                          | 40.2                      | 1.2                         | 2.8                            | 63.3                            | 65.4  |
| September   | 28.5                          | 40.6                      | 1.2                         | 3.0                            | 63.9                            | 65.5  |
| October     | 28.9                          | 41.0                      | 1.4                         | 3.2                            | 64.5                            | 65.6  |
| November    | 29.3                          | 41.3                      | 1.5                         | 3.5                            | 65.1                            | 65.7  |
| PERSONS     |                               |                           |                             |                                |                                 |   |
| <b>1997</b> |                               |                           |                             |                                |                                 |   |
| September   | 67.1                          | 85.7                      | 4.1                         | 4.6                            | 69.6                            | 129.1   |
| October     | 68.8                          | 86.3                      | 3.9                         | 4.3                            | 69.7                            | 129.4   |
| November    | 70.1                          | 87.0                      | 3.9                         | 4.2                            | 70.0                            | 129.8   |
| December    | 70.7                          | 87.5                      | 4.1                         | 4.4                            | 70.3                            | 130.1   |
| <b>1998</b> |                               |                           |                             |                                |                                 |   |
| January     | 70.8                          | 87.6                      | 4.4                         | 4.8                            | 70.5                            | 130.5   |
| February    | 70.4                          | 87.4                      | 4.7                         | 5.1                            | 70.3                            | 130.9   |
| March       | 70.0                          | 87.0                      | 4.9                         | 5.4                            | 70.0                            | 131.3   |
| April       | 70.0                          | 86.9                      | 4.9                         | 5.4                            | 69.7                            | 131.7   |
| May         | 70.3                          | 87.2                      | 4.7                         | 5.1                            | 69.6                            | 132.2   |
| June        | 70.8                          | 88.0                      | 4.4                         | 4.8                            | 69.7                            | 132.6   |
| July        | 71.4                          | 89.0                      | 4.2                         | 4.5                            | 70.1                            | 133.0   |
| August      | 72.0                          | 89.9                      | 4.0                         | 4.3                            | 70.5                            | 133.3   |
| September   | 72.6                          | 90.9                      | 3.9                         | 4.2                            | 70.9                            | 133.7   |
| October     | 73.1                          | 91.7                      | 3.9                         | 4.1                            | 71.4                            | 133.9   |
| November    | 73.6                          | 92.3                      | 3.9                         | 4.1                            | 71.8                            | 134.1   |

(a) Trend estimates for May 1998 to October 1998 have been revised. Estimates for the most recent three months may be subject to significant revisions as data for later months become available.

## LABOUR FORCE STATUS (AGED 15 AND OVER)—Australian Capital Territory(a)

TREND.....

| Month       | Employed<br>full time<br>'000 | Total<br>employed<br>'000 | Total<br>unemployed<br>'000 | Unemp-<br>loyment<br>rate<br>% | Partic-<br>ipation<br>rate<br>% | Civilian<br>population<br>aged 15<br>and over<br>'000 |
|-------------|-------------------------------|---------------------------|-----------------------------|--------------------------------|---------------------------------|---|
| MALES       |                               |                           |                             |                                |                                 |   |
| <b>1997</b> |                               |                           |                             |                                |                                 |   |
| September   | 73.2                          | 84.7                      | 7.5                         | 8.1                            | 79.8                            | 115.5   |
| October     | 72.9                          | 84.4                      | 7.6                         | 8.3                            | 79.6                            | 115.6   |
| November    | 72.6                          | 84.1                      | 7.6                         | 8.3                            | 79.3                            | 115.7   |
| December    | 72.4                          | 84.0                      | 7.5                         | 8.2                            | 79.0                            | 115.8   |
| <b>1998</b> |                               |                           |                             |                                |                                 |   |
| January     | 72.3                          | 83.9                      | 7.4                         | 8.1                            | 78.7                            | 116.0   |
| February    | 72.5                          | 83.8                      | 7.2                         | 7.9                            | 78.4                            | 116.1   |
| March       | 72.7                          | 83.9                      | 7.2                         | 7.9                            | 78.3                            | 116.3   |
| April       | 72.9                          | 83.9                      | 7.2                         | 8.0                            | 78.5                            | 116.1   |
| May         | 72.9                          | 83.9                      | 7.3                         | 8.0                            | 78.7                            | 115.9   |
| June        | 72.6                          | 83.9                      | 7.3                         | 8.0                            | 78.8                            | 115.7   |
| July        | 72.3                          | 83.9                      | 7.2                         | 7.9                            | 78.7                            | 115.7   |
| August      | 71.9                          | 83.9                      | 7.1                         | 7.8                            | 78.7                            | 115.7   |
| September   | 71.5                          | 83.9                      | 7.0                         | 7.7                            | 78.6                            | 115.7   |
| October     | 71.2                          | 83.9                      | 6.9                         | 7.6                            | 78.4                            | 115.8   |
| November    | 70.9                          | 83.8                      | 6.8                         | 7.5                            | 78.2                            | 115.9   |
| FEMALES     |                               |                           |                             |                                |                                 |   |
| <b>1997</b> |                               |                           |                             |                                |                                 |   |
| September   | 46.9                          | 71.7                      | 6.3                         | 8.1                            | 65.4                            | 119.3   |
| October     | 46.8                          | 71.3                      | 6.3                         | 8.1                            | 64.9                            | 119.5   |
| November    | 46.6                          | 71.1                      | 6.1                         | 7.9                            | 64.6                            | 119.6   |
| December    | 46.4                          | 71.3                      | 5.9                         | 7.6                            | 64.5                            | 119.7   |
| <b>1998</b> |                               |                           |                             |                                |                                 |   |
| January     | 46.3                          | 71.8                      | 5.5                         | 7.1                            | 64.6                            | 119.8   |
| February    | 46.2                          | 72.6                      | 5.2                         | 6.6                            | 64.8                            | 119.9   |
| March       | 46.3                          | 73.5                      | 4.8                         | 6.2                            | 65.3                            | 120.0   |
| April       | 46.4                          | 74.4                      | 4.6                         | 5.8                            | 65.8                            | 119.9   |
| May         | 46.3                          | 74.9                      | 4.4                         | 5.6                            | 66.3                            | 119.8   |
| June        | 46.1                          | 75.0                      | 4.4                         | 5.6                            | 66.4                            | 119.7   |
| July        | 45.7                          | 74.6                      | 4.4                         | 5.6                            | 66.1                            | 119.6   |
| August      | 45.5                          | 74.1                      | 4.4                         | 5.6                            | 65.7                            | 119.6   |
| September   | 45.4                          | 73.5                      | 4.4                         | 5.6                            | 65.1                            | 119.5   |
| October     | 45.4                          | 72.9                      | 4.3                         | 5.5                            | 64.5                            | 119.7   |
| November    | 45.4                          | 72.4                      | 4.2                         | 5.5                            | 63.9                            | 119.8   |
| PERSONS     |                               |                           |                             |                                |                                 |   |
| <b>1997</b> |                               |                           |                             |                                |                                 |   |
| September   | 120.0                         | 156.4                     | 13.8                        | 8.1                            | 72.5                            | 234.8   |
| October     | 119.7                         | 155.6                     | 13.9                        | 8.2                            | 72.1                            | 235.1   |
| November    | 119.2                         | 155.3                     | 13.7                        | 8.1                            | 71.8                            | 235.3   |
| December    | 118.8                         | 155.3                     | 13.4                        | 7.9                            | 71.6                            | 235.6   |
| <b>1998</b> |                               |                           |                             |                                |                                 |   |
| January     | 118.6                         | 155.7                     | 12.9                        | 7.6                            | 71.5                            | 235.8   |
| February    | 118.7                         | 156.4                     | 12.4                        | 7.3                            | 71.5                            | 236.1   |
| March       | 119.0                         | 157.4                     | 12.0                        | 7.1                            | 71.7                            | 236.3   |
| April       | 119.3                         | 158.2                     | 11.8                        | 6.9                            | 72.1                            | 236.0   |
| May         | 119.2                         | 158.8                     | 11.7                        | 6.9                            | 72.4                            | 235.7   |
| June        | 118.7                         | 158.9                     | 11.7                        | 6.9                            | 72.5                            | 235.4   |
| July        | 118.0                         | 158.5                     | 11.6                        | 6.8                            | 72.3                            | 235.3   |
| August      | 117.4                         | 158.0                     | 11.5                        | 6.8                            | 72.1                            | 235.3   |
| September   | 116.9                         | 157.4                     | 11.3                        | 6.7                            | 71.7                            | 235.2   |
| October     | 116.6                         | 156.8                     | 11.2                        | 6.7                            | 71.3                            | 235.5   |
| November    | 116.3                         | 156.2                     | 11.0                        | 6.6                            | 70.9                            | 235.8   |

(a) Trend estimates for May 1998 to October 1998 have been revised.

Estimates for the most recent three months may be subject to significant revisions as data for later months become available.



## EXPLANATORY NOTES

- 1** This publication contains preliminary estimates of the civilian labour force derived from the Labour Force Survey component of the monthly population survey. Estimates for the current month are preliminary and subject to revision. Revised estimates for the current month and more detailed estimates will be published in *Labour Force, Australia* (6203.0).
- 2** The population survey is based on a multi-stage area sample of private dwellings (currently about 30,000 houses, flats, etc.) and a list sample of non-private dwellings (hotels, motels, etc.), and covers about 0.5% of the population of Australia. The information is obtained from the occupants of selected dwellings by specially trained interviewers. The interviews are generally conducted during the two weeks beginning on the Monday between the 6th and 12th of each month. The information obtained relates to the week before the interview (i.e. the reference week).
- 3** The ABS has introduced the use of telephone interviewing into the Labour Force Survey. Households selected for the Labour Force Survey are interviewed each month for 8 months, with one eighth of the sample being replaced each month. The first interview is conducted face-to-face. Subsequent interviews are conducted by telephone (if acceptable to the respondent). Telephone interviewing was phased in for each new sample group from August 1996 to February 1997.
- 4** During the period of implementation, the new method produced different estimates than would have been obtained under the old methodology. The effect peaked in November 1996, when it is estimated that the published estimate of total employment was about 36,000 to 48,000 lower than would have been measured under the old methodology. The effect dissipated over the final months of implementation and was no longer discernible from February 1997. Therefore, the estimates for February 1997 and onwards are directly comparable to estimates for periods prior to August 1996.
- 5** The Labour Force Survey includes all persons aged 15 and over except members of the permanent defence forces, certain diplomatic personnel of overseas governments customarily excluded from census and estimated populations, overseas residents in Australia, and members of non-Australian defence forces (and their dependants) stationed in Australia.
- 6** In the Labour Force Survey, coverage rules are applied which aim to ensure that each person is associated with only one dwelling, and hence has only one chance of selection. The coverage rules are necessarily a balance between theoretical and operational considerations. Nevertheless, the chance of a person being enumerated at two separate dwellings in the survey is considered to be negligible.
- 7** Labour Force Survey estimates are calculated in such a way as to add up to independent estimates of the civilian population aged 15 and over (population benchmarks). From February 1994, labour force estimates have been compiled using benchmarks based on the results of the 1991 Census of Population and Housing. Small revisions were made to many of the historical estimates from January 1989 to January 1994.
- 8** From April 1986, the definition of employed persons was changed to include persons who worked without pay between 1 and 14 hours per week in a family business or on a farm (i.e. contributing family workers). For further information, see paragraphs 36 and 37 of the Explanatory Notes to the February 1987 issue of *Labour Force, Australia* (6203.0).

## EXPLANATORY NOTES

### SURVEY SAMPLE REDESIGN

**9** The Labour Force Survey sample has been reselected using information collected in the 1996 Census of Population and Housing.

**10** The bulk of the new sample was phased in over the period September 1997 to April 1998, with one eighth of this portion of the sample being introduced every month. The remainder of the sample (about 15% of the total), which covers less settled areas of Australia and non-private dwellings was rotated in full for New South Wales, Victoria, Tasmania, Northern Territory and Australian Capital Territory in September 1997, and for Queensland, South Australia and Western Australia in October 1997. Such a pattern of implementation means that any changes to labour force estimates due to differences between the two samples, or any other influences, was spread over the eight months.

**11** For further details, see *Information Paper: Labour Force Survey Sample Design* (6269.0).

### RELIABILITY OF ESTIMATES

**12** Two types of error are possible in an estimate based on a sample survey: sampling error and non-sampling error.

*Sampling error* occurs because a sample, rather than the entire population, is surveyed. One measure of the likely difference resulting from not including all dwellings in the survey is given by the standard error. There are about two chances in three that a sample estimate will differ by less than one standard error from the figure that would have been obtained if all dwellings had been included in the survey, and about nineteen chances in twenty that the difference will be less than two standard errors. Standard errors of estimates for the latest month and of estimates of movements since the previous month are shown on pages 30 and 31. Standard errors of other estimates and other movements may be determined by using information in the Technical Notes in *Labour Force, Australia* (6203.0).

*Non sampling error* arises from inaccuracies in collecting, recording and processing the data. Every effort is made to minimise reporting error by the careful design of questionnaires, intensive training and supervision of interviewers, and efficient data processing procedures.

### SEASONAL ADJUSTMENT AND TREND ESTIMATION

**13** Seasonally adjusted series are published in Tables 2, 5 and 12 to 17. Seasonal factors are reviewed annually to take account of each additional year's original data. The results of the latest review were used to compile the revised seasonally adjusted and trend estimates given in this publication. Information about the method of adjustment and revised seasonally adjusted and trend estimates for all months from January 1991 were published in an appendix to the February 1996 issue of *Labour Force, Australia* (6203.0).

**14** Seasonal adjustment is a means of removing the estimated effects of normal seasonal variation from the series so that the effects of other influences on the series can be more clearly recognised. Seasonal adjustment does not aim to remove the irregular or non-seasonal influences which may be present in any particular month. This means that month-to-month movements of the seasonally adjusted estimates may not be reliable indicators of trend behaviour. For example, irregular factors unrelated to the trend account for more than half the seasonally adjusted movement with the following frequency:

- Employment: 5 in 10 monthly movements
- Unemployment: 7 in 10 monthly movements
- Unemployment rate: 7 in 10 monthly movements
- Participation rate: 9 in 10 monthly movements.

## EXPLANATORY NOTES

### SEASONAL ADJUSTMENT AND TREND ESTIMATION *continued*

**15** The smoothing of seasonally adjusted series reduces the impact of the irregular component of the seasonally adjusted series, and creates trend estimates. These trend estimates are derived by applying a 13-term Henderson-weighted moving average to all months except the last six. The last six monthly trend estimates are obtained by applying surrogates of the Henderson average to the seasonally adjusted series. Trend series are used to analyse the underlying behaviour of the series over time. These are published in tables 3, 6 and 12 to 19.

**16** While this smoothing technique enables estimates to be produced for the latest month, it does result in revisions to the most recent months as additional observations become available. Generally, subsequent revisions become smaller, and after three months have a negligible impact on the series. There will also be revisions as a result of the annual review of seasonal factors.

**17** Trend estimates are published for the Northern Territory in table 18 and for the Australian Capital Territory in table 19. Unadjusted series for the two Territories have shown, historically, a high degree of variability, which can lead to considerable revisions to the seasonally adjusted estimates after each annual seasonal factor re-analysis. Seasonally adjusted estimates are not currently published for the two Territories. The most recent six months trend estimates are subject to revision. For the three most recent months, the revision may be relatively large. Inferences about trends drawn from smoothed seasonally adjusted (trend) estimates for months earlier than the latest three months are unlikely to be affected by month to month revisions. They may be affected by revision resulting from the annual re-analysis of seasonal factors.

**18** For further information, see *A Guide to Interpreting Time Series — Monitoring 'Trends': an Overview* (1348.0) or contact the Assistant Director, Time Series Analysis on (02) 6252 6345.

### RELATED PUBLICATIONS

**19** Users may also wish to refer to *Labour Force, Australia* (6203.0). This publication contains a detailed list of related publications which are available from ABS Bookshops.

**20** Current publications produced by the ABS are listed in the *Catalogue of Publications and Products* (1101.0). The ABS also issues, on Tuesdays and Fridays, a *Release Advice* (1105.0) which lists publications to be released in the next few days. The Catalogue and Release Advice are available from any ABS office.

### UNPUBLISHED STATISTICS

**21** As well as the statistics included in this and related publications, the ABS may have other relevant unpublished data available. Inquiries should be made to Michael Slep on 02 6252 6525 or to any ABS office.

### EFFECTS OF ROUNDING

**22** Estimates have been rounded and discrepancies may occur between sums of the component items and totals.

**23** Estimates of movement shown in this publication are obtained by taking the difference of unrounded estimates. The movement estimate is then rounded to one decimal place. Therefore where a discrepancy occurs between the reported movement and the difference of the rounded estimates, the reported movement will be more accurate.

### SYMBOLS AND OTHER USAGES

- \* subject to sampling variability too high for most practical uses. See the Technical Notes in 6203.0 for more details.
- .. not applicable
- r revised
- pts percentage points

## GLOSSARY

|   |  |
|---|--|
| <b>Actively looking for work</b>                            | Includes writing, telephoning or applying in person to an employer for work; answering an advertisement for a job; checking factory noticeboards or the touchscreens at the Centrelink offices; being registered with Centrelink as a jobseeker; checking or registering with any other employment agency; advertising or tendering for work; and contacting friends or relatives.   |
| <b>Attending school</b>                                     | Persons aged 15 to 19 enrolled full time at secondary or high schools in the reference week.   |
| <b>Attending tertiary educational institution full time</b> | Persons aged 15 to 24 enrolled full time at a TAFE college, university, or other educational institution in the reference week.  |
| <b>Employed</b>   | Persons aged 15 and over who, during the reference week: <ul style="list-style-type: none"><li>■ worked for one hour or more for pay, profit, commission or payment in kind in a job or business, or on a farm (comprising employees, employers and own account workers); or</li><li>■ worked for one hour or more without pay in a family business or on a farm (i.e. contributing family workers); or</li><li>■ were employees who had a job but were not at work and were:<ul style="list-style-type: none"><li>■ on paid leave, on leave without pay for less than four weeks up to the end of the reference week,</li><li>■ stood down without pay because of bad weather or plant breakdown at their place of employment for less than four weeks up to the end of the reference week,</li><li>■ on strike or locked out,</li><li>■ on workers' compensation and expected to be returning to their job, or</li><li>■ receiving wages or salary while undertaking full-time study; or</li></ul></li><li>■ were employers, own account workers or contributing family workers who had a job, business or farm, but were not at work.</li></ul> |
| <b>Full-time workers</b>                                    | Employed persons who usually worked 35 hours or more a week (in all jobs) and those who, although usually working less than 35 hours a week, worked 35 hours or more during the reference week   |
| <b>Labour force</b>   | For any group, persons who were employed or unemployed, as defined.  |
| <b>Labour force status</b>                                  | A classification of the civilian population aged 15 and over into employed, unemployed or not in the labour force, as defined. The definitions conform closely to the international standard definitions adopted by the International Conferences of Labour Statisticians.   |
| <b>Not in the labour force</b>                              | Persons who were not in the categories employed or unemployed as defined.  |
| <b>Participation rate</b>                                   | For any group, the labour force expressed as a percentage of the civilian population aged 15 and over in the same group.   |
| <b>Part-time workers</b>                                    | Employed persons who usually worked less than 35 hours a week and who did so during the reference week.  |
| <b>Seasonally adjusted series</b>                           | A time series of estimates with the estimated effects of normal seasonal variation removed. See Explanatory Note 13 to 14 for more detail.   |
| <b>Trend series</b>   | A smoothed seasonally adjusted series of estimates. See Explanatory Notes 15 to 17 for more detail.  |

## G L O S S A R Y

|   |  |
|---|--|
| <b>Unemployed</b>                                 | Persons aged 15 and over who were not employed during the reference week, and: <ul style="list-style-type: none"><li>■ had actively looked for full-time or part-time work at any time in the four weeks up to the end of the reference week and:<ul style="list-style-type: none"><li>■ were available for work in the reference week, or would have been available except for temporary illness (i.e. lasting for less than four weeks to the end of the reference week), or</li><li>■ were waiting to start a new job within four weeks from the end of the reference week and would have started in the reference week if the job had been available then; or</li></ul></li><li>■ were waiting to be called back to a full-time or part-time job from which they had been stood down without pay for less than four weeks up to the end of the reference week (including the whole of the reference week) for reasons other than bad weather or plant breakdown.</li></ul> |
| <b>Unemployed looking for first full-time job</b> | Unemployed persons looking for full-time work (as defined above) who had never worked full time for two weeks or more  |
| <b>Unemployed looking for full-time work</b>      | Unemployed persons who actively looked for full-time work, or were to resume a full-time job from which they had been stood down.  |
| <b>Unemployed looking for part-time work</b>      | Unemployed persons who had actively looked for part-time work only, or were to resume a part-time job from which they had been stood down.   |
| <b>Unemployment rate</b>                          | For any group, the number of unemployed persons expressed as a percentage of the labour force in the same group.   |
| <b>Unemployment to population ratio</b>           | For any group, the number of unemployed persons expressed as a percentage of the civilian population in the same group.  |

## STANDARD ERRORS

The estimates in this publication are based on information gained from the occupants of a sample survey of dwellings. Because the entire population is not surveyed, the published estimates are subject to sampling error. The most common way of quantifying such sampling error is to calculate the standard error for the published estimate or statistic.

### LEVEL ESTIMATES

To illustrate, let us say the published level estimate for employed persons aged 15 to 19 is 500,000. The calculated standard error in this case is 9,000. The standard error is then used to interpret the level estimate of 500,000. For instance, the standard error of 9,000 indicates that:

- There are approximately two chances in three that the real value falls within the range 491,000 to 509,000 ( $500,000 \pm 9,000$ )
- There are approximately nineteen chances in twenty that the real value falls within the range 482,000 to 518,000 ( $500,000 \pm 18,000$ ).

The real value in this case is the result we would obtain if we could enumerate the total population.

The following tables show the standard errors for this month's level estimates.

|         | EMPLOYED..... |           |       | UNEMPLOYED.....      |                      |       | Labour force | Not in labour force | Unemployment rate | Participation rate |
|---------|---------------|-----------|-------|----------------------|----------------------|-------|--------------|---------------------|-------------------|--------------------|
|         | Full time     | Part time | Total | Looking for f/t work | Looking for p/t work | Total |              |                     |                   |                    |
|         | '000          | '000      | '000  | '000                 | '000                 | '000  |              |                     |                   |                    |
| NSW     | 14.7          | 9.9       | 16.1  | 5.9                  | 3.7                  | 6.5   | 16.5         | 14.1                | 0.2               | 0.3                |
| Vic.    | 12.1          | 8.6       | 13.4  | 4.9                  | 3.1                  | 5.5   | 13.8         | 11.6                | 0.2               | 0.4                |
| Qld     | 9.6           | 6.6       | 10.6  | 3.9                  | 2.4                  | 4.3   | 10.9         | 8.8                 | 0.2               | 0.4                |
| SA      | 5.1           | 3.7       | 5.7   | 2.4                  | 1.1                  | 2.5   | 5.9          | 5.1                 | 0.3               | 0.5                |
| WA      | 6.4           | 4.5       | 7.1   | 2.5                  | 1.4                  | 2.7   | 7.3          | 5.8                 | 0.3               | 0.5                |
| Tas.    | 1.7           | 1.3       | 1.8   | 0.9                  | 0.5                  | 1.0   | 1.8          | 1.7                 | 0.4               | 0.5                |
| NT      | 2.1           | 1.1       | 2.3   | 0.5                  | 0.3                  | 0.6   | 2.4          | 1.5                 | 0.6               | 1.8                |
| ACT     | 1.6           | 1.1       | 1.8   | 0.6                  | 0.4                  | 0.6   | 1.8          | 1.3                 | 0.4               | 0.8                |
| Males   | 20.0          | 9.7       | 20.9  | 7.9                  | 3.4                  | 8.3   | 21.5         | 15.3                | 0.2               | 0.3                |
| Females | 15.5          | 14.2      | 19.1  | 6.1                  | 4.7                  | 7.3   | 19.6         | 18.6                | 0.2               | 0.3                |
| Persons | 22.9          | 15.9      | 25.3  | 9.4                  | 5.6                  | 10.3  | 25.9         | 21.7                | 0.1               | 0.2                |

|         | NUMBER OF UNEMPLOYED PERSONS..... |                                       |                            |                      |       | UNEMPLOYMENT RATE.....          |                                       |                            |                      |       |
|---------|-----------------------------------|---------------------------------------|----------------------------|----------------------|-------|---------------------------------|---------------------------------------|----------------------------|----------------------|-------|
|         | Aged 15-19 looking for f/t work   | Aged 20 and over looking for f/t work | Total looking for f/t work | Looking for p/t work | Total | Aged 15-19 looking for f/t work | Aged 20 and over looking for f/t work | Total looking for f/t work | Looking for p/t work | Total |
|         | '000                              | '000                                  | '000                       | '000                 | '000  | pts                             | pts                                   | pts                        | pts                  | pts   |
| NSW     | 2.5                               | 5.6                                   | 5.9                        | 3.7                  | 6.5   | 2.7                             | 0.2                                   | 0.3                        | 0.5                  | 0.2   |
| Vic.    | 2.1                               | 4.7                                   | 4.9                        | 3.1                  | 5.5   | 3.5                             | 0.3                                   | 0.3                        | 0.5                  | 0.2   |
| Qld     | 1.8                               | 3.6                                   | 3.9                        | 2.4                  | 4.3   | 2.9                             | 0.3                                   | 0.3                        | 0.5                  | 0.2   |
| SA      | 1.1                               | 2.2                                   | 2.4                        | 1.1                  | 2.5   | 4.6                             | 0.4                                   | 0.4                        | 0.6                  | 0.3   |
| WA      | 1.1                               | 2.3                                   | 2.5                        | 1.4                  | 2.7   | 3.2                             | 0.3                                   | 0.4                        | 0.5                  | 0.3   |
| Tas.    | 0.4                               | 0.9                                   | 0.9                        | 0.5                  | 1.0   | 5.1                             | 0.6                                   | 0.6                        | 0.8                  | 0.4   |
| NT      | 0.3                               | 0.5                                   | 0.5                        | 0.3                  | 0.6   | 6.8                             | 0.6                                   | 0.7                        | 1.3                  | 0.6   |
| ACT     | 0.2                               | 0.5                                   | 0.6                        | 0.4                  | 0.6   | 8.4                             | 0.4                                   | 0.4                        | 0.9                  | 0.4   |
| Males   | 3.2                               | 7.5                                   | 7.9                        | 3.4                  | 8.3   | 1.7                             | 0.2                                   | 0.2                        | 0.5                  | 0.2   |
| Females | 2.7                               | 5.6                                   | 6.1                        | 4.7                  | 7.3   | 2.6                             | 0.3                                   | 0.3                        | 0.3                  | 0.2   |
| Persons | 4.0                               | 8.8                                   | 9.4                        | 5.6                  | 10.3  | 1.4                             | 0.1                                   | 0.1                        | 0.2                  | 0.1   |

## STANDARD ERRORS *continued*

### MOVEMENT ESTIMATES

The following example illustrates how to use the standard error to interpret a movement estimate. Let us say that one month the published level estimate for females employed part time in Australia is 1,387,000; the next month the published level estimate is 1,400,000. The calculated standard error for the movement estimate is 10,600. The standard error is then used to interpret the published movement estimate of 13,000. For instance, the standard error of 10,300 indicates that:

- There are approximately two chances in three that the real movement over the two month period falls within the range 2,400 to 23,600 (13,000 + or - 10,600)
- There are approximately nineteen chances in twenty that the real movement falls within the range -8,200 to 34,200 (13,000 + or - 21,200).

The following tables show the standard errors for this month's movement estimates.

|         | EMPLOYED..... |           |       | UNEMPLOYED.....      |                      |       | Labour force | Not in labour force | Unemployment rate | Participation rate |
|---------|---------------|-----------|-------|----------------------|----------------------|-------|--------------|---------------------|-------------------|--------------------|
|         | Full time     | Part time | Total | Looking for f/t work | Looking for p/t work | Total |              |                     |                   |                    |
|         | '000          | '000      | '000  | '000                 | '000                 | '000  |              |                     |                   |                    |
| NSW     | 11.5          | 7.5       | 12.7  | 4.5                  | 3.0                  | 5.0   | 13.0         | 10.9                | 0.2               | 0.3                |
| Vic.    | 8.8           | 6.1       | 9.9   | 3.5                  | 2.4                  | 3.9   | 10.1         | 8.4                 | 0.2               | 0.3                |
| Qld     | 6.6           | 4.7       | 7.3   | 2.9                  | 1.9                  | 3.2   | 7.5          | 6.1                 | 0.2               | 0.3                |
| SA      | 3.5           | 2.5       | 3.9   | 1.6                  | 0.9                  | 1.7   | 4.1          | 3.5                 | 0.2               | 0.3                |
| WA      | 4.6           | 3.3       | 5.1   | 1.9                  | 1.1                  | 2.0   | 5.3          | 4.2                 | 0.2               | 0.4                |
| Tas.    | 1.5           | 1.1       | 1.7   | 0.7                  | 0.4                  | 0.8   | 1.7          | 1.5                 | 0.4               | 0.5                |
| NT      | 1.3           | 0.8       | 1.5   | 0.4                  | 0.2                  | 0.4   | 1.5          | 1.0                 | 0.4               | 1.1                |
| ACT     | 1.2           | 0.8       | 1.4   | 0.4                  | 0.3                  | 0.5   | 1.4          | 1.0                 | 0.3               | 0.6                |
| Males   | 15.2          | 7.3       | 16.0  | 6.0                  | 3.0                  | 6.3   | 16.5         | 11.4                | 0.1               | 0.2                |
| Females | 11.7          | 10.6      | 14.5  | 4.7                  | 3.8                  | 5.6   | 14.9         | 14.1                | 0.1               | 0.2                |
| Persons | 17.7          | 12.0      | 19.8  | 7.1                  | 4.4                  | 7.8   | 20.4         | 16.7                | 0.1               | 0.1                |

|         | NUMBER OF UNEMPLOYED PERSONS..... |                                       |                            |                      |       | UNEMPLOYMENT RATE.....          |                                       |                            |                      |       |
|---------|-----------------------------------|---------------------------------------|----------------------------|----------------------|-------|---------------------------------|---------------------------------------|----------------------------|----------------------|-------|
|         | Aged 15-19 looking for f/t work   | Aged 20 and over looking for f/t work | Total looking for f/t work | Looking for p/t work | Total | Aged 15-19 looking for f/t work | Aged 20 and over looking for f/t work | Total looking for f/t work | Looking for p/t work | Total |
|         | '000                              | '000                                  | '000                       | '000                 | '000  | pts                             | pts                                   | pts                        | pts                  | pts   |
| NSW     | 2.1                               | 4.3                                   | 4.5                        | 3.0                  | 5.0   | 2.2                             | 0.2                                   | 0.2                        | 0.4                  | 0.2   |
| Vic.    | 1.7                               | 3.4                                   | 3.5                        | 2.4                  | 3.9   | 2.8                             | 0.2                                   | 0.2                        | 0.4                  | 0.2   |
| Qld     | 1.5                               | 2.8                                   | 2.9                        | 1.9                  | 3.2   | 2.5                             | 0.2                                   | 0.2                        | 0.4                  | 0.2   |
| SA      | 0.8                               | 1.5                                   | 1.6                        | 0.9                  | 1.7   | 3.5                             | 0.3                                   | 0.3                        | 0.5                  | 0.2   |
| WA      | 0.9                               | 1.8                                   | 1.9                        | 1.1                  | 2.0   | 2.8                             | 0.3                                   | 0.3                        | 0.4                  | 0.2   |
| Tas.    | 0.3                               | 0.7                                   | 0.7                        | 0.4                  | 0.8   | 4.0                             | 0.5                                   | 0.5                        | 0.6                  | 0.4   |
| NT      | 0.2                               | 0.3                                   | 0.4                        | 0.2                  | 0.4   | 4.9                             | 0.4                                   | 0.5                        | 1.0                  | 0.4   |
| ACT     | 0.2                               | 0.4                                   | 0.4                        | 0.3                  | 0.5   | 6.9                             | 0.3                                   | 0.4                        | 0.8                  | 0.3   |
| Males   | 2.7                               | 5.7                                   | 6.0                        | 3.0                  | 6.3   | 1.5                             | 0.1                                   | 0.1                        | 0.4                  | 0.1   |
| Females | 2.4                               | 4.4                                   | 4.7                        | 3.8                  | 5.6   | 2.3                             | 0.2                                   | 0.2                        | 0.2                  | 0.1   |
| Persons | 3.3                               | 6.7                                   | 7.1                        | 4.4                  | 7.8   | 1.2                             | 0.1                                   | 0.1                        | 0.2                  | 0.1   |

# WHAT IF...? REVISIONS TO TREND ESTIMATES

## EFFECT OF NEW SEASONALLY ADJUSTED ESTIMATES ON TREND ESTIMATES

Each time new seasonally adjusted estimates become available, trend estimates are revised (see paragraphs 13 and 14 of Explanatory Notes).

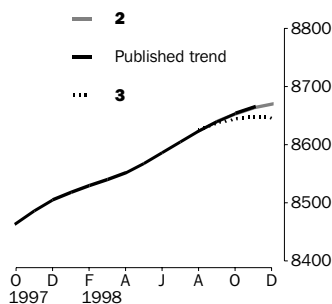
### TREND REVISIONS

The examples in the tables below show four illustrative scenarios and the consequent revisions to previous trend estimates of employment and unemployment rate.

- 1** The December seasonally adjusted estimate is the same as the November estimate.
- 2** The December seasonally adjusted estimate is higher than the November estimate by:
  - +0.33% for employment
  - +2.0% for the unemployment rate
- 3** The December seasonally adjusted estimate is lower than the November estimate by:
  - -0.33% for employment
  - -2.0% for the unemployment rate
- 4** The December seasonally adjusted estimate results in a revised November trend estimate which is identical to the new December trend estimate.

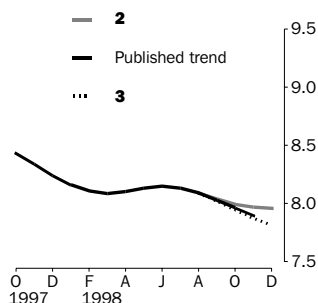
The percentage changes of 0.33% and 2.0% were chosen because they represent the average absolute monthly percentage changes in employment and the unemployment rate respectively.

### EMPLOYMENT ('000)



|                     |                | WHAT IF NEXT MONTH'S SEASONALLY ADJUSTED ESTIMATE IS: |                            |                            |  |         |
|---------------------|----------------|---|----------------------------|----------------------------|--|---------|
|                     |                | <b>1</b>  | <b>2</b>                   | <b>3</b>                   | <b>4</b>                                 |         |
|                     |                | 8 637.9   | 8 666.6                    | 8 609.3                    | 8 619.8                                  |         |
|                     |                | <i>i.e. the same as Nov 1998</i>                      | <i>i.e. rises by 0.33%</i> | <i>i.e. falls by 0.33%</i> | <i>i.e. same trend for Nov &amp; Dec</i> |         |
| TRENDS as PUBLISHED |                |   |                            |                            |  |         |
| 1998                | September      | 8 640.4   | 8 638.7                    | 8 640.0                    | 8 637.4                                  | 8 637.9 |
|                     | October        | 8 653.8   | 8 649.1                    | 8 653.3                    | 8 644.8                                  | 8 646.4 |
|                     | November       | 8 664.8   | 8 655.9                    | 8 663.9                    | 8 647.9                                  | 8 650.8 |
|                     | December (new) | —   | 8 658.4                    | 8 670.5                    | 8 646.4                                  | 8 650.8 |

### UNEMPLOYMENT RATE (%)



|                     |                | WHAT IF NEXT MONTH'S SEASONALLY ADJUSTED ESTIMATE IS: |                           |                           |  |     |
|---------------------|----------------|---|---------------------------|---------------------------|--|-----|
|                     |                | <b>1</b>  | <b>2</b>                  | <b>3</b>                  | <b>4</b>                                 |     |
|                     |                | 8.0   | 8.2                       | 7.8                       | 8.2                                      |     |
|                     |                | <i>i.e. the same as Nov 1998</i>                      | <i>i.e. rises by 2.0%</i> | <i>i.e. falls by 2.0%</i> | <i>i.e. same trend for Nov &amp; Dec</i> |     |
| TRENDS as PUBLISHED |                |   |                           |                           |  |     |
| 1998                | September      | 8.0   | 8.0                       | 8.0                       | 8.0                                      | 8.0 |
|                     | October        | 8.0   | 8.0                       | 7.9                       | 8.0                                      | 8.0 |
|                     | November       | 7.9   | 7.9                       | 8.0                       | 7.9                                      | 8.0 |
|                     | December (new) | —   | 7.9                       | 8.0                       | 7.8                                      | 8.0 |









## SELF-HELP ACCESS TO STATISTICS

*PHONE* Call 1900 986 400 for the latest statistics on CPI, Labour Force, Earnings, National Accounts, Balance of Payments and other topics (call cost is 75c per minute).

*INTERNET* <http://www.abs.gov.au>

*LIBRARY* A range of ABS publications is available from public and tertiary libraries Australia wide. Contact your nearest library to determine whether it has the ABS statistics you require.

## WHY NOT SUBSCRIBE?

*PHONE* +61 1300 366 323

*FAX* +61 03 9615 7848

## CONTACTING THE ABS

ABS provides a range of services, including: a telephone inquiry service; information consultancy tailored to your needs; survey, sample and questionnaire design; survey evaluation and methodological reviews; and statistical training.

| <i>INQUIRIES</i> | <i>By phone</i> | <i>By fax</i> |
|------------------|-----------------|---------------|
| Canberra         | 02 6252 6627    | 02 6253 1404  |
| Sydney           | 02 9268 4611    | 02 9268 4668  |
| Melbourne        | 03 9615 7755    | 03 9615 7798  |
| Brisbane         | 07 3222 6351    | 07 3222 6283  |
| Perth            | 08 9360 5140    | 08 9360 5955  |
| Adelaide         | 08 8237 7100    | 08 8237 7566  |
| Hobart           | 03 6222 5800    | 03 6222 5995  |
| Darwin           | 08 8943 2111    | 08 8981 1218  |

*POST* Client Services, ABS, PO Box 10, Belconnen, ACT 2616

*EMAIL* [client.services@abs.gov.au](mailto:client.services@abs.gov.au)



2620200011989

ISSN 1031-038X

RRP \$17.50